

#3430 Store at -20°C

RhoC (D40E4) Rabbit mAb



100 µl
 (10 estern blots)

Orders ■ 877-616-CELL (2355)
 orders@cellsignal.com
Support ■ 877-678-TECH (8324)
 info@cellsignal.com
Web ■ www.cellsignal.com

rev. 02/08/10

This product is intended for research purposes only. This product is not intended to be used for therapeutic or diagnostic purposes in humans or animals.

Applications W Endogenous	Species Cross-Reactivity* H, M, Mk, (R)	Molecular Wt. 21 kDa	Isotype Rabbit IgG**
---------------------------------	--	-------------------------	-------------------------

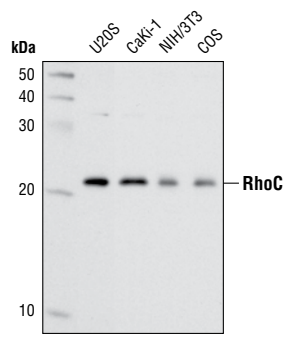
Background: Rho family small GTPases, including Rho, Rac and cdc42, act as molecular switches, regulating processes such as cell migration, adhesion, proliferation and differentiation. They are activated by guanine nucleotide exchange factors (GEFs), which catalyze the exchange of bound GDP for GTP, and inhibited by GTPase activating proteins (GAPs), which catalyze the hydrolysis of GTP to GDP. A third level of regulation is provided by the stoichiometric binding of Rho GDP dissociation inhibitor (RhoGDI) (1). RhoA, RhoB and RhoC are highly homologous, but appear to have divergent biological functions. Carboxy-terminal modifications and differences in subcellular localization allow these three proteins to respond to and act on distinct signaling molecules (2,3).

Specificity/Sensitivity: RhoC (D40E4) Rabbit mAb detects endogenous levels of total RhoC protein. The antibody does not cross-react with RhoA or RhoB.

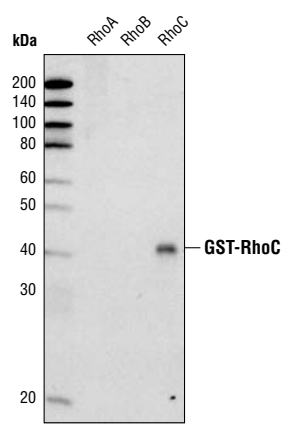
Source/Purification: Monoclonal antibody is produced by immunizing animals with a synthetic peptide corresponding to the carboxy terminus of human RhoC.

Background References:

- (1) DerMardirossian, C. and Bokoch, G.M. (2005) *Trends Cell Biol* 15, 356–63.
- (2) Wennerberg, K. and Der, C.J. (2004) *J Cell Sci* 117, 1301–12.
- (3) Wheeler, A.P. and Ridley, A.J. (2004) *Exp Cell Res* 301, 43–9.



Western blot analysis of extracts from various cell types using RhoC (D40E4) Rabbit mAb.



Western blot analysis of recombinant GST-tagged RhoA, RhoB and RhoC using RhoC (D40E4) Rabbit mAb.

Entrez-Gene ID #389
Swiss-Prot Acc. #P08134

Storage: Supplied in 10 mM sodium HEPES (pH 7.5), 150 mM NaCl, 100 µg/ml BSA and 50% glycerol. Store at -20°C. Do not aliquot the antibody.

***Species cross-reactivity is determined by western blot.**

****Anti-rabbit secondary antibodies must be used to detect this antibody.**

Recommended Antibody Dilutions:

Western blotting 1:1000

For application specific protocols please see the web page for this product at www.cellsignal.com.

Please visit www.cellsignal.com for a complete listing of recommended companion products.

IMPORTANT: For Western blots, incubate membrane with diluted antibody in 5% w/v BSA, 1X TBS, 0.1% Tween-20 at 4°C with gentle shaking, overnight.

Applications Key: W—Western IP—Immunoprecipitation IHC—Immunohistochemistry ChIP—Chromatin Immunoprecipitation IF—Immunofluorescence F—Flow cytometry E-P—ELISA-Peptide
Species Cross-Reactivity Key: H—human M—mouse R—rat Hm—hamster Mk—monkey Mi—mink C—chicken Dm—D. melanogaster X—Xenopus Z—zebrafish B—bovine
 Dg—dog Pg—pig Sc—S. cerevisiae Ce—C. elegans Hr—horse All—all species expected Species enclosed in parentheses are predicted to react based on 100% homology.