

**#3439** Store at -20°C

# Notch1 (C37C7) Rabbit mAb



100 µl  
 (10 western blots)

**Orders** ■ 877-616-CELL (2355)  
 orders@cellsignal.com  
**Support** ■ 877-678-TECH (8324)  
 info@cellsignal.com  
**Web** ■ www.cellsignal.com

rev. 09/20/10

This product is intended for research purposes only. This product is not intended to be used for therapeutic or diagnostic purposes in humans or animals.

Applications	Species Cross-Reactivity*	Molecular Wt.	Isotype
W, IP Endogenous	H	120, 300 kDa	Rabbit IgG**

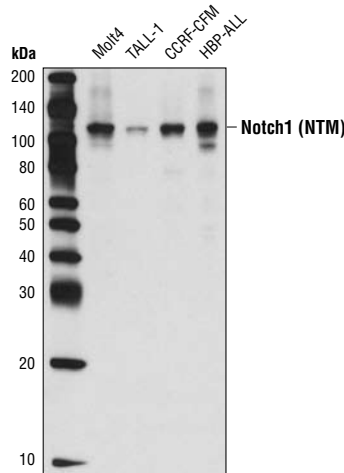
**Background:** Notch1 is a transmembrane protein functioning in development and the determination of cell-fate (1). During maturation, the notch molecule is cleaved by a furin-like convertase at its extracellular domain (2). Upon binding to a ligand such as Delta1, or upon extracellular calcium depletion, the carboxy-terminal notch1 fragment is released and further cleaved between Gly1743 and Val1744 (3,4). The resulting activated cytosolic fragment translocates to the nucleus where it activates transcription.

**Specificity/Sensitivity:** Notch1 (C37C7) Rabbit mAb detects endogenous levels of total Notch1 protein. It recognizes both the full-length (~300 kDa) and the transmembrane/intracellular region NTM (~120 kDa).

**Source/Purification:** Monoclonal antibody is produced by immunizing animals with a synthetic peptide corresponding to residues surrounding Gln2497 of human Notch1.

**Background References:**

- (1) Artavanis-Tsakonas, S. et al. (1999) *Science* 284, 770–6.
- (2) Chan, Y.M. and Jan, Y.N. (1998) *Cell* 94, 423–6.
- (3) Schroeter, E.H. et al. (1998) *Nature* 393, 382–6.
- (4) Rand, M.D. et al. (2000) *Mol Cell Biol* 20, 1825–35.



Western blot analysis of extracts from various cell lines using Notch1 (C37C7) Rabbit mAb.

**Entrez-Gene ID** #4851  
**Swiss-Prot Acc.** #P46531

**Storage:** Supplied in 10 mM sodium HEPES (pH 7.5), 150 mM NaCl, 100 µg/ml BSA and 50% glycerol. Store at -20°C. Do not aliquot the antibody.

**\*Species cross-reactivity is determined by western blot.**

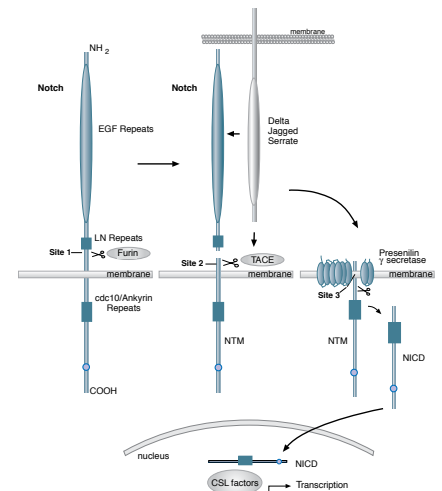
**\*\*Anti-rabbit secondary antibodies must be used to detect this antibody.**

**Recommended Antibody Dilutions:**

Western blotting	1:1000
Immunoprecipitation	1:50

For application specific protocols please see the web page for this product at [www.cellsignal.com](http://www.cellsignal.com).

Please visit [www.cellsignal.com](http://www.cellsignal.com) for a complete listing of recommended companion products.



**IMPORTANT: For western blots, incubate membrane with diluted antibody in 5% w/v nonfat dry milk, 1X TBS, 0.1% Tween-20 at 4°C with gentle shaking, overnight.**

**Applications Key:** W—Western IP—Immunoprecipitation IHC—Immunohistochemistry ChIP—Chromatin Immunoprecipitation IF—Immunofluorescence F—Flow cytometry E-P—ELISA-Peptide  
**Species Cross-Reactivity Key:** H—human M—mouse R—rat Hm—hamster Mk—monkey Mi—mink C—chicken Dm—D. melanogaster X—Xenopus Z—zebrafish B—bovine  
 Dg—dog Pg—pig Sc—S. cerevisiae Ce—C. elegans Hr—horse All—all species expected Species enclosed in parentheses are predicted to react based on 100% homology.