

MSK1 (C27B2) Rabbit mAb

✓ 100 µl
(10 western blots)

Orders ■ 877-616-CELL (2355)
orders@cellsignal.com
Support ■ 877-678-TECH (8324)
info@cellsignal.com
Web ■ www.cellsignal.com

rev. 02/14/11

This product is intended for research purposes only. This product is not intended to be used for therapeutic or diagnostic purposes in humans or animals.

Applications	Species Cross-Reactivity*	Molecular Wt.	Isotype
W, IP Endogenous	H, M, R, Mk	90 kDa	Rabbit IgG**

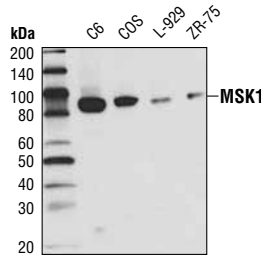
Background: MSK1, a mitogen and stress activated protein kinase, is activated by Erk as well as p38 MAPK in response to growth factors and cellular stress, respectively (1). MSK1 resembles RSK because it has two kinase domains connected by a regulatory linker region (2). Phosphorylation of RSK1 at Ser364 and Ser381 is critical for RSK1 activity (3). These sites are analogous to Ser360 and Ser376 of MSK1, which may be important for MSK1 activity as well.

Specificity/Sensitivity: MSK1 (C27B2) Rabbit mAb detects endogenous levels of total MSK1 protein.

Source/Purification: Monoclonal antibody is produced by immunizing animals with a synthetic peptide (KLH-coupled) corresponding to residues surrounding Asn784 of human MSK1.

Background References:

- (1) Deak, M. et al. (1998) *EMBO J.* 17, 4426–4441.
- (2) Pierrat, B. et al. (1998) *J. Biol. Chem.* 273, 29661–29671.
- (3) Dalby, K. et al. (1998) *J. Biol. Chem.* 273, 1496–1505.



Western blot analysis of extracts from various cell lines using MSK1 (C27B2) Rabbit mAb.

Entrez-Gene ID #9252
Swiss-Prot Acc. #075582

Storage: Supplied in 10 mM sodium HEPES (pH 7.5), 150 mM NaCl, 100 µg/ml BSA and 50% glycerol. Store at -20°C. Do not aliquot the antibody.

*Species cross-reactivity is determined by western blot.

**Anti-rabbit secondary antibodies must be used to detect this antibody.

Recommended Antibody Dilutions:

Western blotting 1:1000
Immunoprecipitation 1:100

For application specific protocols please see the web page for this product at www.cellsignal.com.

Please visit www.cellsignal.com for a complete listing of recommended companion products.

IMPORTANT: For western blots, incubate membrane with diluted antibody in 5% w/v BSA, 1X TBS, 0.1% Tween-20 at 4°C with gentle shaking, overnight.

Rabbit monoclonal antibody is produced under license (granting certain rights including those under U. S. Patent No. 5,675,063) from Epitomics, Inc.