

#3518 Store at -20°C

GADD45 α Antibody



✓ 100 μ l
(10 Western mini-blot)

Orders ■ 877-616-CELL (2355)
orders@cellsignal.com
Support ■ 877-678-TECH (8324)
info@cellsignal.com
Web ■ www.cellsignal.com

rev. 12/03/09

This product is for *in vitro* research use only and is not intended for use in humans or animals.
This product is not intended for use as a therapeutic or in diagnostic procedures.

Entrez-Gene ID #1647
Swiss-Prot Acc. #P24522

Applications	Species Cross-Reactivity*	Molecular Wt.	Source
W Endogenous	H, M, R, Mk	22 kDa	Rabbit**

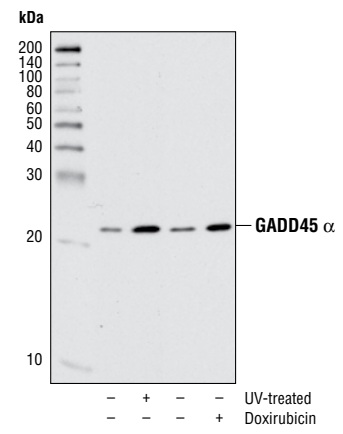
Background: GADD45 α , β and γ are an evolutionarily conserved, homologous family of nuclear proteins that function as stress sensors for cellular physiological and environmental damage. GADD45 proteins are required for the activation of the G2/M checkpoint induced by UV radiation or alkylating agents (1). GADD45-induced G2/M checkpoint is regulated through inactivation of Cdc2-cyclin B1 kinase (2). GADD45 forms a complex with p21 and Cdc2, and may serve as core for interaction with other cell cycle regulators (3,4).

Specificity/Sensitivity: GADD45 α Antibody detects endogenous levels of total GADD45 α protein.

Source/Purification: Polyclonal antibodies are produced by immunizing animals with a synthetic peptide (KLH-coupled) corresponding to amino acids surrounding Asp129 of human GADD45 α . Antibodies are purified by peptide affinity chromatography.

Background References:

- (1) Wang, X.W. et al. (1999) *Proc Natl Acad Sci USA* 96, 3706–11.
- (2) Yang, Q. et al. (2000) *J Biol Chem* 275, 36892–8.
- (3) Zhao, H. et al. (2000) *Exp Cell Res* 258, 92–100.
- (4) Liebermann, D.A. and Hoffman, B. (2008) *J Mol Signal* 3, 15.



Western blot analysis of extracts of HeLa cells, untreated or treated with UV or doxorubicin, using GADD45 α Antibody.

Storage: Supplied in 10 mM sodium HEPES (pH 7.5), 150 mM NaCl, 100 μ g/ml BSA and 50% glycerol. Store at -20°C. Do not aliquot the antibody.

*Species cross-reactivity is determined by Western blot.

**Anti-rabbit secondary antibodies must be used to detect this antibody.

Recommended Antibody Dilutions:

Western blotting 1:1000

For application specific protocols please see the web page for this product at www.cellsignal.com.

Please visit www.cellsignal.com for a complete listing of recommended companion products.

IMPORTANT: For Western blots, incubate membrane with diluted antibody in 5% w/v BSA, 1X TBS, 0.1% Tween-20 at 4°C with gentle shaking, overnight.

Applications Key: W—Western IP—Immunoprecipitation IHC—Immunohistochemistry ChIP—Chromatin Immunoprecipitation IF—Immunofluorescence F—Flow cytometry E—ELISA E-P—ELISA Peptide
Species Cross-Reactivity Key: H—human M—mouse R—rat Hm—hamster Mk—monkey Mi—mink C—chicken Dm—D. melanogaster X—Xenopus Z—zebrafish B—bovine
Dg—dog Pg—pig Sc—S. cerevisiae All—all species expected Species enclosed in parentheses are predicted to react based on 100% homology.