

#3539 Store at -20°C

Rab11 Antibody



✓ 100 µl
(10 western blots)

Orders ■ 877-616-CELL (2355)
orders@cellsignal.com
Support ■ 877-678-TECH (8324)
info@cellsignal.com
Web ■ www.cellsignal.com

rev. 11/08/10

This product is intended for research purposes only. This product is not intended to be used for therapeutic or diagnostic purposes in humans or animals.

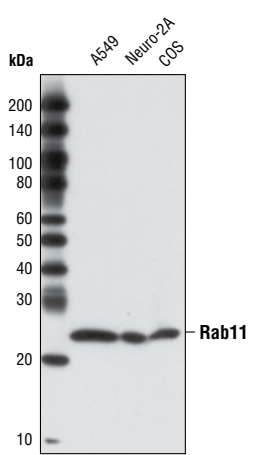
Applications	Species Cross-Reactivity*	Molecular Wt.	Source
W Endogenous	H, M, R, Mk	25 kDa	Rabbit**

Background: Rab11a, Rab11b and Rab25 are members of the Rab11 family of small Ras-like GTPases. Rab11 (isoforms Rab11a and Rab11b) functions as a key regulator in the recycling of perinuclear, plasma membrane and Golgi compartment endosomes (1,2). Despite some overlap, distinct differences exist between Rab11a and Rab11b in both their cellular distribution and functional roles. Rab11a is ubiquitously expressed while Rab11b is found mainly in the heart and brain (3,4). Like other Rab proteins, Rab11 exerts its function via interactions with Rab11 family interacting proteins (FIPs). While there are three distinct classes of FIPs, all appear to share a conserved carboxy-terminal Rab-binding domain that allows Rab-FIP protein interaction. When bound together, these proteins are thought to regulate membrane-associated protein sorting (5,6).

Specificity/Sensitivity: Rab11 Antibody detects endogenous levels of total Rab11 protein, including isoforms Rab11a and Rab11b.

Source/Purification: Polyclonal antibodies are produced by immunizing animals with a synthetic peptide corresponding to residues surrounding Arg30 of human Rab11 protein. Antibodies are purified by protein A and peptide affinity chromatography.

- Background References:**
- (1) Ullrich, O. et al. (1996) *J. Cell Biol.* 135, 913–924.
 - (2) Chen, W. et al. (1998) *Mol. Biol. Cell* 9, 3241–3257.
 - (3) Lapierre, L.A. et al. (2003) *Exp. Cell Res.* 290, 322–331.
 - (4) Khvotchev, M.V. et al. (2003) *J. Neurosci.* 23, 10531–10539.
 - (5) Junutula, J.R. et al. (2004) *J. Biol. Chem.* 279, 33430–33437.
 - (6) Hales, C.M. et al. (2001) *J. Biol. Chem.* 276, 39067–39075.



Western blot analysis of extracts from various cell lines using Rab11 Antibody.

Entrez-Gene ID #8766
Swiss-Prot Acc. #P62491

Storage: Supplied in 10 mM sodium HEPES (pH 7.5), 150 mM NaCl, 100 µg/ml BSA and 50% glycerol. Store at -20°C. Do not aliquot the antibody.

*Species cross-reactivity is determined by western blot.
**Anti-rabbit secondary antibodies must be used to detect this antibody.

Recommended Antibody Dilutions:
Western blotting 1:1000

For application specific protocols please see the web page for this product at www.cellsignal.com.

Please visit www.cellsignal.com for a complete listing of recommended companion products.

IMPORTANT: For western blots, incubate membrane with diluted antibody in 5% w/v BSA, 1X TBS, 0.1% Tween-20 at 4°C with gentle shaking, overnight.

© 2010 Cell Signaling Technology, Inc. Cell Signaling Technology® is a registered trademark of Cell Signaling Technology, Inc.

Applications Key: W—Western IP—Immunoprecipitation IHC—Immunohistochemistry ChIP—Chromatin Immunoprecipitation IF—Immunofluorescence F—Flow cytometry E-P—ELISA-Peptide
Species Cross-Reactivity Key: H—human M—mouse R—rat Hm—hamster Mk—monkey Mi—mink C—chicken Dm—D. melanogaster X—Xenopus Z—zebrafish B—bovine
 Dg—dog Pg—pig Sc—S. cerevisiae Ce—C. elegans Hr—horse All—all species expected Species enclosed in parentheses are predicted to react based on 100% homology.