

**#3678** Store at -20°C

# Mouse Anti-rabbit IgG (Conformation Specific) (L27A9) mAb

100 µl  
 (20 westernblots)



**Orders** ■ 877-616-CELL (2355)  
 orders@cellsignaling.com  
**Support** ■ 877-678-TECH (8324)  
 info@cellsignaling.com  
**Web** ■ www.cellsignaling.com

rev. 01/26/12

**This product is intended for research purposes only. This product is not intended to be used for therapeutic or diagnostic purposes in humans or animals.**

**Background:** Mouse Anti-rabbit IgG (Conformation Specific) (L27A9) mAb only reacts with native IgG and does not bind to the denatured and reduced rabbit IgG heavy chain or light chain. When performing immunoprecipitation (IP) followed by western blotting, the denatured rabbit IgG light and heavy chains of the primary antibody used for IP run at approximately 25 and 50 kD, respectively, on the subsequent western blot and can often obscure bands of proteins that have similar molecular weights. Using Mouse Anti-rabbit IgG (Conformation Specific) (L27A9) mAb as a secondary antibody will eliminate this problem.

**Specificity/Sensitivity:** Mouse Anti-rabbit IgG (Conformation Specific) (L27A9) mAb recognizes the native rabbit IgG. It does not recognize the denatured and reduced rabbit IgG heavy (about 50 kDa) or light (about 25 kDa) chains on western blot.

**Source/Purification:** Monoclonal antibody is produced by immunizing animals with native total rabbit IgG.

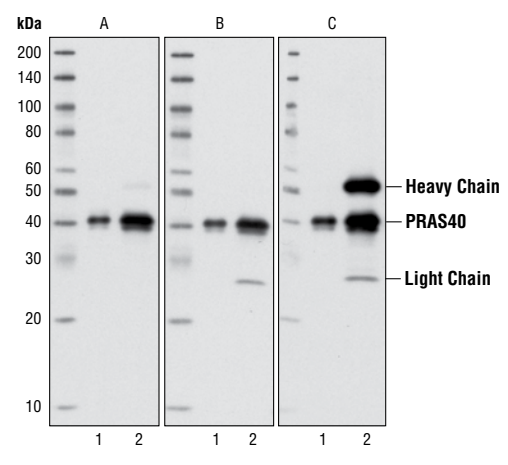
**Storage:** Supplied in 10 mM sodium HEPES (pH 7.5), 150 mM NaCl, 100 µg/ml BSA, 50% glycerol and less than 0.02% sodium azide. Store at -20°C. *Do not aliquot the antibody.*

**\*\*Anti-mouse secondary antibodies must be used to detect this antibody.**

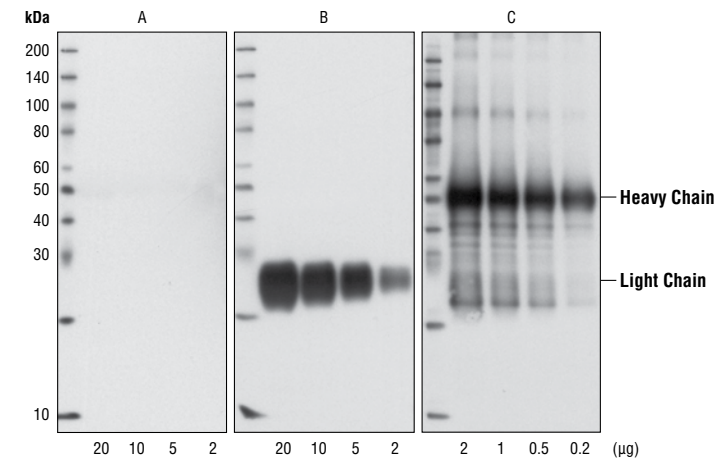
**Recommended Antibody Dilutions:**  
 Western blotting 1:2000

**For application specific protocols please see the web page for this product at [www.cellsignaling.com](http://www.cellsignaling.com).**

**Please visit [www.cellsignaling.com](http://www.cellsignaling.com) for a complete listing of recommended companion products.**



◀ Immunoprecipitation of PRAS40 from untreated HeLa cells using PRAS40 (D23C7) Rabbit mAb #2691 (Lane 2). All lanes are probed with PRAS40 (D23C7) Rabbit mAb #2691 as the primary antibody, including input control in lane 1. Secondary antibodies include Mouse Anti-rabbit IgG (Conformation Specific) (L27A9) mAb (Panel A), Mouse Anti-rabbit IgG (Light-Chain Specific) (L57A3) mAb #3677 (Panel B), and Anti-rabbit IgG, HRP-linked Antibody #7074 (Panel C). For Panels A and B, the bound mouse anti-rabbit IgG mAb was detected using Anti-mouse IgG, HRP-linked Antibody #7076. The positions of the reduced and denatured rabbit IgG heavy and light chains are indicated.



◀ Western blot analysis of decreasing concentrations of total rabbit IgG, reduced and denatured in 1X SDS loading buffer with DTT, using Mouse Anti-rabbit IgG (Conformation Specific) (L27A9) mAb (Panel A), Mouse Anti-rabbit IgG (Light-Chain Specific) (L57A3) mAb #3677 (Panel B), or Anti-rabbit IgG, HRP-linked Antibody #7074 (Panel C). For Panels A and B, the bound mouse anti-rabbit IgG mAb was detected using Anti-mouse IgG, HRP-linked Antibody #7076. The positions of the reduced and denatured rabbit IgG heavy and light chains are indicated.

**IMPORTANT: For western blots, incubate membrane with diluted antibody in 5% w/v nonfat dry milk, 1X TBS, 0.1% Tween-20 at room temperature with gently shaking for 1 hour.**

© 2012 Cell Signaling Technology, Inc. Cell Signaling Technology® is a trademark of Cell Signaling Technology, Inc.

**Applications Key:** W—Western IP—Immunoprecipitation IHC—Immunohistochemistry ChIP—Chromatin Immunoprecipitation IF—Immunofluorescence F—Flow cytometry E-P—ELISA—Peptide  
**Species Cross-Reactivity Key:** H—human M—mouse R—rat Hm—hamster Mk—monkey Mi—mink C—chicken Dm—D. melanogaster X—Xenopus Z—zebrafish B—bovine  
 Dg—dog Pg—pig Sc—S. cerevisiae Ce—C. elegans Hr—horse All—all species expected Species enclosed in parentheses are predicted to react based on 100% homology.