

Phospho-GRB10 (Tyr67) Antibody



100 µl
 (10 western blots)

Orders ■ 877-616-CELL (2355)
 orders@cellsignal.com
Support ■ 877-678-TECH (8324)
 info@cellsignal.com
Web ■ www.cellsignal.com

rev. 07/13/10

This product is intended for research purposes only. This product is not intended to be used for therapeutic or diagnostic purposes in humans or animals.

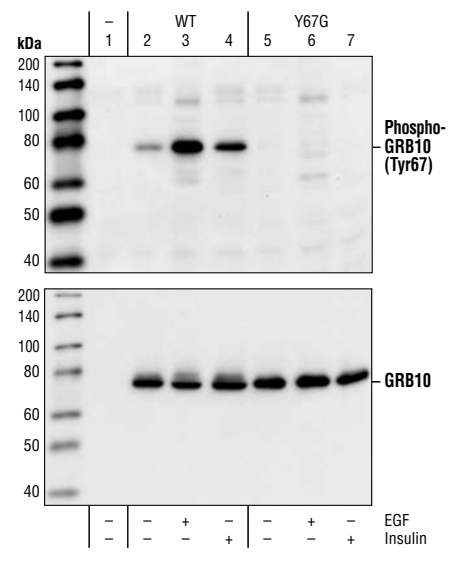
Applications	Species Cross-Reactivity*	Molecular Wt.	Source
W Transfected	H	76 kDa	Rabbit**

Background: The GRB7 family of adaptor proteins consist of GRB7, GRB10 and GRB14, which all contain an amino-terminal proline-rich SH3 binding domain, followed by PH, PBS and SH2 domains. Each member of the family has several splice variants (1). It has been reported that GRB10 interacts with many receptor tyrosine kinases (RTKs) as well as downstream signal molecules such as Raf, Akt and Nedd4 (1,2). Although it was originally thought that GRB10 is exclusively phosphorylated at serine residues (3), Src kinase family members have been shown to phosphorylate GRB10 at Tyr67 (4).

Specificity/Sensitivity: Phospho-GRB10 (Tyr67) Antibody detects transfected GRB10 only when phosphorylated at Tyr67. The antibody does not cross-react with phosphorylated GRB7 or GRB14.

Source/Purification: Polyclonal antibodies are produced by immunizing animals with a synthetic phosphopeptide corresponding to residues surrounding Tyr67 of human GRB10. Antibodies are purified by protein A and peptide affinity chromatography.

- Background References:**
- Han, D.C. et al. (2001) *Oncogene* 20, 6315–6321.
 - Jahn, T. et al. (2002) *Mol. Cell. Biol.* 22, 979–991.
 - Ooi, J. et al. (1995) *Oncogene* 10, 1621–1630.
 - Langlais, P. et al. (2000) *Oncogene* 19, 2895–2903.



Western blot analysis of extracts from COS cells, untransfected (lane 1) or transfected with either wild-type GRB10 (lanes 2–4) or GRB10 Y67G mutant (lanes 5–7), untreated or treated with EGF or insulin as indicated using Phospho-GRB10 (Tyr67) Antibody (upper) or GRB10 Antibody #3702 (lower). (Plasmids provided by Dr. F. Liu, Dept. of Pharmacology and Biochemistry, University of Texas Health Science Center.)

Entrez-Gene ID # 2887
Swiss-Prot Acc. # Q13322

Storage: Supplied in 10 mM sodium HEPES (pH 7.5), 150 mM NaCl, 100 µg/ml BSA and 50% glycerol. Store at -20°C. Do not aliquot the antibody.

***Species cross-reactivity is determined by western blot.**

****Anti-rabbit secondary antibodies must be used to detect this antibody.**

Recommended Antibody Dilutions:
 Western Blotting 1:1000

For application specific protocols please see the web page for this product at www.cellsignal.com.

Please visit www.cellsignal.com for a complete listing of recommended companion products.

IMPORTANT: For western blots, incubate membrane with diluted antibody in 5% w/v BSA, 1X TBS, 0.1% Tween-20 at 4°C with gentle shaking, overnight.

Applications Key: W—Western IP—Immunoprecipitation IHC—Immunohistochemistry ChIP—Chromatin Immunoprecipitation IF—Immunofluorescence F—Flow cytometry E-P—ELISA-Peptide
Species Cross-Reactivity Key: H—human M—mouse R—rat Hm—hamster Mk—monkey Mi—mink C—chicken Dm—D. melanogaster X—Xenopus Z—zebrafish B—bovine
 Dg—dog Pg—pig Sc—S. cerevisiae Ce—C. elegans Hr—Horse All—all species expected Species enclosed in parentheses are predicted to react based on 100% homology.