

# GCK Antibody

✓ 100 µl  
(10 western blots)

**Orders** ■ 877-616-CELL (2355)  
orders@cellsignal.com  
**Support** ■ 877-678-TECH (8324)  
info@cellsignal.com  
**Web** ■ www.cellsignal.com

rev 11/01/10

This product is intended for research purposes only. This product is not intended to be used for therapeutic or diagnostic purposes in humans or animals.

Applications	Species Cross-Reactivity*	Molecular Wt.	Source
W, IP Endogenous	H, M, R, Mk	91 kDa	Rabbit**

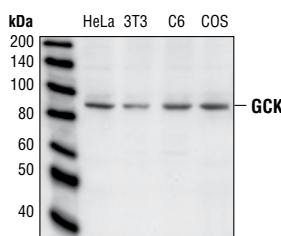
**Background:** Germinal center kinase (GCK) is the founding member of the GCK family, a group of serine/threonine kinases homologous to the yeast Ste20 kinase. GCK is activated by TNF and associated with TRAF2 (TNF receptor-associated factor 2) and MEKK1, thereby activating the SAPK/JNK pathway (1,2). GCK does not significantly phosphorylate MEKK1, instead it enhances MEKK1 oligomerization and autophosphorylation (3). GCK binds and activates MLK3, indicating that GCK may have other effectors (3).

**Specificity/Sensitivity:** GCK Antibody detects endogenous levels of total GCK protein. This antibody does not cross-react with HPK or other members of the GCK family.

**Source/Purification:** Polyclonal antibodies are produced by immunizing animals with a synthetic peptide (KLH-coupled) corresponding to residues surrounding Ser380 of human GCK. Antibodies are purified by protein A and peptide affinity chromatography.

**Background References:**

- (1) Pombo, C.M. et al. (1995) *Nature* 377, 750–754.
- (2) Yuasa, T. et al. (1998) *J. Biol. Chem.* 273, 22681–22692.
- (3) Chadee, D.N. et al. (2002) *Mol. Cell. Biol.* 22, 737–749.



Western blot analysis of extracts from HeLa, NIH/3T3, C6 and COS cells using GCK Antibody.

Entrez-Gene ID #5871  
Swiss-Prot Acc. #Q12851

**Storage:** Supplied in 10 mM sodium HEPES (pH 7.5), 150 mM NaCl, 100 µg/ml BSA and 50% glycerol. Store at -20°C. Do not aliquot the antibody.

\*Species cross-reactivity is determined by western blot.

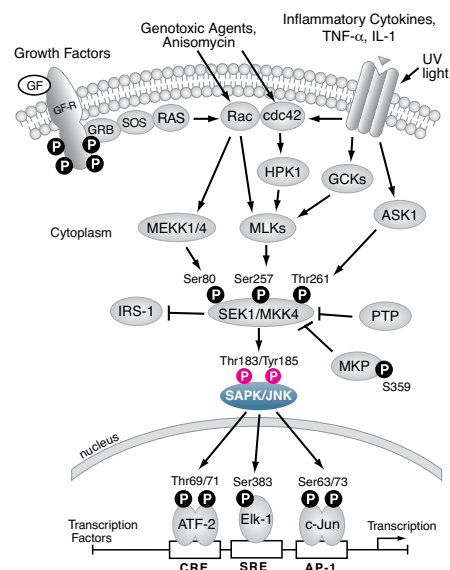
\*\*Anti-rabbit secondary antibodies must be used to detect this antibody.

**Recommended Antibody Dilutions:**

Western Blotting	1:1000
Immunoprecipitation	1:50

For application specific protocols please see the web page for this product at [www.cellsignal.com](http://www.cellsignal.com).

Please visit [www.cellsignal.com](http://www.cellsignal.com) for a complete listing of recommended companion products.



**IMPORTANT: For western blots, incubate membrane with diluted antibody in 5% w/v BSA, 1X TBS, 0.1% Tween-20 at 4°C with gentle shaking, overnight.**

**Applications Key:** W—Western IP—Immunoprecipitation IHC—Immunohistochemistry ChIP—Chromatin Immunoprecipitation IF—Immunofluorescence F—Flow cytometry E-P—ELISA-Peptide  
**Species Cross-Reactivity Key:** H—human M—mouse R—rat Hm—hamster Mk—monkey Mi—mink C—chicken Dm—D. melanogaster X—Xenopus Z—zebrafish B—bovine  
 Dg—dog Pg—pig Sc—S. cerevisiae Ce—C. elegans Hr—Horse All—all species expected Species enclosed in parentheses are predicted to react based on 100% homology.