

#3871 Store at -20°C

Phospho-PLC γ 2 (Tyr1217) Antibody

✓ 100 μ l
(10 Western mini-blot)



Orders ■ 877-616-CELL (2355)
orders@cellsignal.com
Support ■ 877-678-TECH (8324)
info@cellsignal.com
Web ■ www.cellsignal.com

rev. 08/29/07

This product is for *in vitro* research use only and is not intended for use in humans or animals.

Applications	Species Cross-Reactivity*	Molecular Wt.	Source
W	H, M, R	150 kDa	Rabbit

Background: Phosphoinositide-specific phospholipase C (PLC) plays a significant role in transmembrane signaling. In response to extracellular stimuli such as hormones, growth factors and neurotransmitters, PLC hydrolyzes phosphatidylinositol 4,5-bisphosphate (PIP₂) to generate two secondary messengers: inositol 1,4,5-triphosphate (IP₃) and diacylglycerol (DAG) (1). At least four families of PLCs have been identified: PLC β , PLC γ , PLC δ and PLC ϵ . The PLC β subfamily includes four members, PLC β 1-4. All four members of the subfamily are activated by α - or β - γ -subunits of the heterotrimeric G-proteins (2,3).

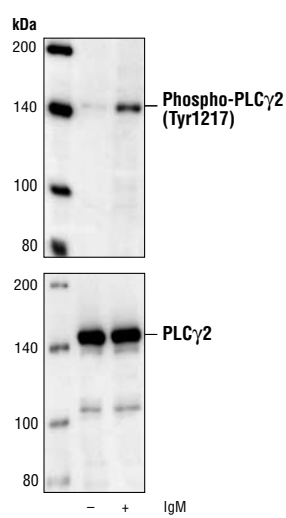
Phosphorylation is one of the key mechanisms that regulates the activity of PLC. Phosphorylation of Ser1105 by PKA or PKC inhibits PLC β 3 activity (4,5). Ser537 of PLC β 3 is phosphorylated by CaMKII, and this phosphorylation may contribute to the basal activity of PLC β 3. PLC γ is activated by both receptor and nonreceptor tyrosine kinases (6).

PLC γ forms a complex with EGF and PDGF receptors, which leads to the phosphorylation of PLC γ at Tyr771, 783 and 1245 (7). Phosphorylation by Syk at Tyr783 activates the enzymatic activity of PLC γ 1 (8).

PLC γ 2 is engaged in antigen-dependent signaling in B cell and collagen-dependent signaling in platelets. Phosphorylation by Btk or Lck at tyrosines 753, 759, 1197 and 1217 is correlated with PLC γ 2 activity (9,10).

Specificity/Sensitivity: Phospho-PLC γ 2 (Tyr1217) Antibody detects endogenous levels of PLC γ 2 phosphorylated at Tyr1217. This antibody does not cross-react with phosphorylated PLC γ 1.

Source/Purification: Polyclonal antibodies are produced by immunizing rabbits with a synthetic phospho-peptide (KLH-coupled) corresponding to residues surrounding Tyr1217 of human PLC γ 2. Antibodies are purified by protein A and peptide affinity chromatography.



Western blot analysis of extracts from Ramos cells, untreated or treated with anti-human IgM using Phospho-PLC γ 2 (Tyr1217) Antibody (upper) or PLC γ 2 Antibody #3872 (lower).

Background References:

- (1) Singer, W.D. et al. (1997) *Annu. Rev. Biochem.* 66, 475-509.
- (2) Smrcka, A.V. et al. (1991) *Science* 251, 804-807.
- (3) Taylor, S. J. et al. (1991) *Nature* 350, 516-518.
- (4) Yue, C. et al. (1998) *J. Biol. Chem.* 273, 18023-18027.
- (5) Yue, C. et al. (2000) *J. Biol. Chem.* 275, 30220-30225.
- (6) Margolis, B. et al. (1989) *Cell* 57, 1101-1107.
- (7) Kim, H.K. et al. (1991) *Cell* 65, 435-441.
- (8) Wang, Z. et al. (1998) *Mol. Cell. Biol.* 18, 590-597.
- (9) Watanabe, D. et al. (2001) *J. Biol. Chem.* 276, 38595-38601.
- (10) Ozdener, F. et al. (2002) *Mol. Pharmacol.* 62, 672-679.

Storage: Supplied in 10 mM sodium HEPES (pH 7.5), 150 mM NaCl, 100 μ g/ml BSA and 50% glycerol. Store at -20°C. Do not aliquot the antibody.

*Species cross-reactivity is determined by Western blot.

Recommended Antibody Dilutions:
Western Blotting 1:1000

- Companion Products:**
 PLC γ 2 Antibody #3872
 Phospho-PLC γ 2 (Tyr759) Antibody #3874
 Phospho-PLC γ 1 (Tyr783) Antibody #2821
 PLC γ 1 Antibody #2822
 Phospho-Lck (Tyr505) Antibody #2751
 Lck Antibody #2752
 Phototope[®]-HRP Western Blot Detection System, Anti-rabbit IgG, HRP-linked Antibody #7071
 Anti-rabbit IgG, HRP-linked Antibody #7074
 Prestained Protein Marker, Broad Range (Premixed Format) #7720
 Biotinylated Protein Ladder #7727
 20X LumiGLO[®] Reagent and 20X Peroxide #7003

IMPORTANT: For Western blots, incubate membrane with diluted antibody in 5% w/v BSA, 1X TBS, 0.1% Tween-20 at 4°C with gentle shaking, overnight.

Applications Key: W—Western IP—Immunoprecipitation IHC—Immunohistochemistry IC—Immunocytochemistry IF—Immunofluorescence
Species Cross-Reactivity Key: H—human M—mouse R—rat Hm—hamster Mk—monkey Mi—mink C—chicken X—Xenopus
 F—Flow cytometry E—ELISA D—DELFIAP[®]
 Z—zebra fish B—bovine All—all species expected
 Species enclosed in parentheses are predicted to react based on 100% sequence homology.

Western Immunoblotting Protocol (Primary Antibody Incubation in BSA)

For Western blots, incubate membrane with diluted antibody in 5% w/v BSA, 1X TBS, 0.1% Tween-20 at 4°C with gentle shaking, overnight.

A Solutions and Reagents

NOTE: Prepare solutions with Milli-Q or equivalently purified water.

- 1X Phosphate Buffered Saline (PBS)
- 1X SDS Sample Buffer:** 62.5 mM Tris-HCl (pH 6.8 at 25°C), 2% w/v SDS, 10% glycerol, 50 mM DTT, 0.01% w/v bromophenol blue or phenol red
- Transfer Buffer:** 25 mM Tris base, 0.2 M glycine, 20% methanol (pH 8.5)
- 10X Tris Buffered Saline (TBS):** To prepare 1 liter of 10X TBS: 24.2 g Tris base, 80 g NaCl; adjust pH to 7.6 with HCl (use at 1X).
- Nonfat Dry Milk (weight to volume [w/v])
- Blocking Buffer:** 1X TBS, 0.1% Tween-20 with 5% w/v nonfat dry milk; for 150 ml, add 15 ml 10X TBS to 135 ml water, mix. Add 7.5 g nonfat dry milk and mix well. While stirring, add 0.15 ml Tween-20 (100%).
- Wash Buffer:** 1X TBS, 0.1% Tween-20 (TBS/T)
- Bovine Serum Albumin (BSA)
- Primary Antibody Dilution Buffer:** 1X TBS, 0.1% Tween-20 with 5% BSA; for 20 ml, add 2 ml 10X TBS to 18 ml water, mix. Add 1.0 g BSA and mix well. While stirring, add 20 µl Tween-20 (100%).
- Phototope[®]-HRP Western Blot Detection System #7071:** Includes biotinylated protein ladder, secondary anti-rabbit (#7074) antibody conjugated to horseradish peroxidase (HRP), anti-biotin antibody conjugated to HRP, LumiGLO[®] chemiluminescent reagent and peroxide.
- Prestained Protein Marker, Broad Range (Premixed Format) #7720
- Biotinylated Protein Ladder Detection Pack #7727
- Blotting Membrane:** This protocol has been optimized for nitrocellulose membranes, which CST recommends. PVDF membranes may also be used.

B Protein Blotting

A general protocol for sample preparation is described below.

- Treat cells by adding fresh media containing regulator for desired time.
- Aspirate media from cultures; wash cells with 1X PBS; aspirate.
- Lyse cells by adding 1X SDS sample buffer (100 µl per well of 6-well plate or 500 µl per plate of 10 cm diameter plate). Immediately scrape the cells off the plate and transfer the extract to a microcentrifuge tube. Keep on ice.
- Sonicate for 10–15 seconds to shear DNA and reduce sample viscosity.
- Heat a 20 µl sample to 95–100°C for 5 minutes; cool on ice.
- Microcentrifuge for 5 minutes.
- Load 20 µl onto SDS-PAGE gel (10 cm x 10 cm).

NOTE: CST recommends loading prestained molecular weight markers (#7720, 10 µl/lane) to verify electrotransfer and biotinylated protein ladder (#7727, 10 µl/lane) to determine molecular weights.

- Electrotransfer to nitrocellulose or PVDF membrane.

C Membrane Blocking and Antibody Incubations

NOTE: Volumes are for 10 cm x 10 cm (100 cm²) of membrane; for different sized membranes, adjust volumes accordingly.

- (Optional) After transfer, wash nitrocellulose membrane with 25 ml TBS for 5 minutes at room temperature.
- Incubate membrane in 25 ml of blocking buffer for 1 hour at room temperature.
- Wash three times for 5 minutes each with 15 ml of TBS/T.
- Incubate membrane and primary antibody (at the appropriate dilution) in 10 ml primary antibody dilution buffer with gentle agitation overnight at 4°C.
- Wash three times for 5 minutes each with 15 ml of TBS/T.
- Incubate membrane with HRP-conjugated secondary antibody (1:2000) and HRP-conjugated anti-biotin antibody (1:1000) to detect biotinylated protein markers in 10 ml of blocking buffer with gentle agitation for 1 hour at room temperature.
- Wash three times for 5 minutes each with 15 ml of TBS/T.

D Detection of Proteins

- Incubate membrane with 10 ml LumiGLO[®] (0.5 ml 20X LumiGLO[®], 0.5 ml 20X Peroxide and 9.0 ml Milli-Q water) with gentle agitation for 1 minute at room temperature.

NOTE: LumiGLO[®] substrate can be further diluted if signal response is too fast.

- Drain membrane of excess developing solution (do not let dry), wrap in plastic wrap and expose to x-ray film. An initial 10-second exposure should indicate the proper exposure time.

NOTE: Due to the kinetics of the detection reaction, signal is most intense immediately following LumiGLO[®] incubation and declines over the following 2 hours.