

GRK2 Antibody

✓ 100 µl
(10 Western mini-blot)



Cell Signaling
TECHNOLOGY®

Orders ■ 877-616-CELL (2355)
orders@cellsignal.com

Support ■ 877-678-TECH (8324)
info@cellsignal.com

Web ■ www.cellsignal.com

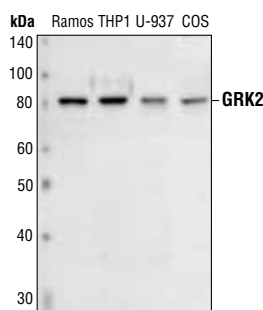
new 12/02

Applications W, IP	Species Cross-Reactivity H, M, R, Hm, Mk	Molecular Wt. 80 kDa	Source Rabbit
-----------------------	---	-------------------------	------------------

Background: G-protein-coupled receptor kinase 2 (GRK2), also known as beta-adrenergic receptor kinase 1 (beta-ARK1), is a member of the GRK family, which phosphorylates the activated form of G-protein-coupled receptors (GPCRs) and initiates the desensitization process of GPCR (1). GRK2 kinase activity and cellular localization are tightly regulated by interactions with activated receptors, G-beta and G-gamma subunits, adaptor proteins, phospholipids, caveolin and calmodulin, as well as by phosphorylation (1). PKC phosphorylation enhances GRK2 activity by promoting its membrane localization and by abolishing the inhibitory association of calmodulin (2,3). PKA phosphorylates GRK2 at serine 685, which facilitates the association of GRK2 with a beta-adrenergic receptor (4). Erk inhibits GRK2 activity via phosphorylation at serine 670 of GRK2 (5). Src phosphorylates GRK2 at multiple tyrosine residues (tyrosines 13, 86 and 92) that activates GRK2 activity and promotes GRK2 degradation (6,7).

Specificity/Sensitivity: GRK2 Antibody detects total levels of endogenous GRK2. This antibody may also detect GRK3 but does not cross-react with other GRKs.

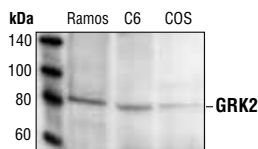
Source/Purification: Polyclonal antibodies are produced by immunizing rabbits with a synthetic peptide (KLH coupled) corresponding to the N-terminal residues of human GRK2. Antibodies are purified by protein A and peptide affinity chromatography.



Western blot analysis of extracts from Ramos, THP1, U-937 and COS cells, using GRK2 Antibody.

Background References:

- (1) Pitcher, J. A. et al. (1998) *Annu. Rev. Biochem.* 67, 653-692.
- (2) Winstel, R. et al. (1996) *Proc. Natl. Acad. Sci. USA* 93, 2105-2109.
- (3) Krasel, C. et al. (2001) *J. Biol. Chem.* 276, 1911-1915.
- (4) Cong, M. et al. (2001) *J. Biol. Chem.* 276, 15192-15199.
- (5) Pitcher, J. A. et al. (1999) *J. Biol. Chem.* 274, 34531-34534.
- (6) Sarnago, S. et al. (1999) *J. Biol. Chem.* 274, 34411-34416.
- (7) Penela, P. et al. (2001) *EMBO J.* 20, 5129-5138.



Immunoprecipitation of GRK2 from Ramos, C6 and COS cells followed by Western blot analysis, using GRK2 Antibody.

IMPORTANT: For Western blots, incubate membrane with diluted antibody in 5% BSA, 1X TBS, 0.1% Tween-20 at 4°C with gentle shaking, overnight.

Storage: Supplied in 10 mM sodium HEPES (pH 7.5), 150 mM NaCl, 100 µg/ml BSA and 50% glycerol. Store at -20°C. Do not aliquot the antibody.

Recommended Antibody Dilutions:

Western blotting 1:1000
Immunoprecipitation 1:25

Companion Products:

- Phospho-Src Family (Tyr416) Antibody #2101
- Nonphospho-Src (Tyr416) (7G9) Monoclonal Antibody #2102
- Phospho-Src (Tyr527) Antibody #2105
- Nonphospho-Src (Tyr527) Antibody #2107
- Phospho-beta-Arrestin 1 (Ser412) (6-24) Monoclonal Antibody #2416
- G Protein alpha Subunit Antibody #3992
- Phospho-p44/42 MAP Kinase (Thr202/Tyr204) Antibody #9101
- p44/42 MAP Kinase Antibody #9102
- Phospho-PKC (pan) Antibody #9371
- Phospho-PKC Antibody Sampler Kit #9921
- Phototope-HRP Western Blot Detection System, Anti-rabbit IgG, HRP-linked Antibody #7071
- Anti-rabbit IgG, HRP-linked Antibody #7074
- Prestained Protein Marker, Broad Range (Premixed Format) #7720
- Biotinylated Protein Ladder Detection Pack #7727
- LumiGLO® Reagent and Peroxide #7003

Western Immunoblotting Protocol

For Western blots, incubate membrane with diluted anti-body in 5% BSA, 1X TBS, 0.1% Tween-20 at 4°C with gentle shaking, overnight.

A. Solutions and Reagents

Note: Prepare solutions with Milli-Q or equivalently purified water.

- A1. ■ 1X Phosphate Buffered Saline (PBS)
- A2. ■ 1X SDS Sample Buffer:
62.5 mM Tris-HCl (pH 6.8 at 25°C), 2% w/v SDS, 10% glycerol, 50 mM DTT, 0.01% w/v bromophenol blue or phenol red
- A3. ■ Transfer Buffer:
25 mM Tris base, 0.2 M glycine, 20% methanol (pH 8.5)
- A4. ■ 10X Tris Buffered Saline (TBS):
To prepare 1 liter of 10X TBS: 24.2 g Tris base, 80 g NaCl; adjust pH to 7.6 with HCl (use at 1X).
- A5. ■ Nonfat Dry Milk (weight to volume [w/v])
- A6. ■ Blocking Buffer:
1X TBS, 0.1% Tween-20 with 5% w/v nonfat dry milk; for 150 ml, add 15 ml 10X TBS to 135 ml water, mix. Add 7.5 g nonfat dry milk and mix well. While stirring, add 0.15 ml Tween-20 (100%).
- A7. ■ Wash Buffer:
1X TBS, 0.1% Tween-20 (TBS/T)
- A8. ■ Bovine Serum Albumin (BSA)
- A9. ■ Primary Antibody Dilution Buffer:
1X TBS, 0.1% Tween-20 with 5% BSA; for 20 ml, add 2 ml 10X TBS to 18 ml water, mix. Add 1.0 g BSA and mix well. While stirring, add 20 µl Tween-20 (100%).
- A10. ■ Phototope[®]-HRP Western Blot Detection System #7071:
Includes biotinylated protein ladder, secondary anti-rabbit (#7074) antibody conjugated to horseradish peroxidase (HRP), anti-biotin antibody conjugated to HRP, LumiGLO[®] chemiluminescent reagent and peroxide.
- A11. ■ Prestained Protein Marker, Broad Range (Premixed Format) #7720
- A12. ■ Biotinylated Protein Ladder Detection Pack #7727
- A13. ■ Blotting Membrane:
This protocol has been optimized for nitrocellulose membranes, which CST recommends. PVDF membranes may also be used.

B. Protein Blotting

A general protocol for sample preparation is described below.

- B1. Treat cells by adding fresh media containing regulator for desired time.
- B2. Aspirate media from cultures; wash cells with 1X PBS; aspirate.
- B3. Lyse cells by adding 1X SDS sample buffer (100 µl per well of 6-well plate or 500 µl per plate of 10 cm plate). Immediately scrape the cells off the plate and transfer the extract to a microcentrifuge tube. Keep on ice.
- B4. Sonicate for 10–15 seconds to shear DNA and reduce sample viscosity.
- B5. Heat a 20 µl sample to 95–100°C for 5 minutes; cool on ice.
- B6. Microcentrifuge for 5 minutes.
- B7. Load 20 µl onto SDS-PAGE gel (10 cm x 10 cm).

Note: CST recommends loading prestained molecular weight markers (#7720, 10 µl/lane) to verify electrotransfer and biotinylated protein ladder (#7727, 10 µl/lane) to determine molecular weights.

- B8. Electrotransfer to nitrocellulose or PVDF membrane.

C. Membrane Blocking and Antibody Incubations

Note: Volumes are for 10 cm x 10 cm (100 cm²) of membrane; for different sized membranes, adjust volumes accordingly.

- C1. (Optional) After transfer, wash nitrocellulose membrane with 25 ml TBS for 5 minutes at room temperature.
- C2. Incubate membrane in 25 ml of blocking buffer for 1 hour at room temperature.
- C3. Wash three times for 5 minutes each with 15 ml of TBS/T.
- C4. Incubate membrane and primary antibody (at the appropriate dilution) in 10 ml primary antibody dilution buffer with gentle agitation overnight at 4°C.
- C5. Wash three times for 5 minutes each with 15 ml of TBS/T.
- C6. Incubate membrane with HRP-conjugated secondary antibody (1:2000) and HRP-conjugated anti-biotin antibody (1:1000) to detect biotinylated protein markers in 10 ml of blocking buffer with gentle agitation for 1 hour at room temperature.
- C7. Wash three times for 5 minutes each with 15 ml of TBS/T.

D. Detection of Proteins

- D1. Incubate membrane with 10 ml LumiGLO[®] (0.5 ml 20X LumiGLO[®], 0.5 ml 20X Peroxide and 9.0 ml Milli-Q water) with gentle agitation for 1 minute at room temperature.

Note: LumiGLO[®] substrate can be further diluted if signal response is too fast.

- D2. Drain membrane of excess developing solution (do not let dry), wrap in plastic wrap and expose to x-ray film. An initial 10-second exposure should indicate the proper exposure time.

Note: Due to the kinetics of the detection reaction, signal is most intense immediately following LumiGLO[®] incubation and declines over the following 2 hours.

A. Solutions and Reagents

Note: Prepare solutions with Milli-Q or equivalently purified water.

A1. ■ 1X Phosphate Buffered Saline (PBS)

A2. ■ 1X Cell Lysis Buffer:

20 mM Tris (pH 7.5)

150 mM NaCl

1 mM EDTA

1 mM EGTA

1% Triton X-100

2.5 mM Sodium pyrophosphate

1 mM β -Glycerolphosphate

1 mM Na_3VO_4

1 $\mu\text{g}/\text{ml}$ Leupeptin

Note: CST recommends adding 1 mM PMSF before use.*

A3. ■ Transfer Buffer:

25 mM Tris base, 0.2 mM glycine, 20% methanol (pH 8.5)

A4. ■ Protein A Agarose Beads:

(Can be stored for 2 weeks at 4°C.) Add 5 ml of 1X PBS to 1.5 g of protein A agarose beads. Shake 2 hours at 4°C; spin down. Wash pellet twice with PBS. Resuspend beads in 1 volume of PBS.

A5. ■ 3X SDS Sample Buffer:

187.5 mM Tris-HCl (pH 6.8 at 25°C), 6% w/v SDS, 30% glycerol, 150 mM DTT, 0.03% w/v bromophenol blue

B. Preparing Cell Lysates

- B1. Aspirate media. Treat cells by adding fresh media containing regulator for desired time.
- B2. To harvest cells under nondenaturing conditions, remove media and rinse cells once with ice-cold PBS.
- B3. Remove PBS and add 0.5 ml 1X ice-cold cell lysis buffer plus 1 mM PMSF* to each plate (10 cm) and incubate the plate on ice for 5 minutes.
- B4. Scrape cells off the plate and transfer to microcentrifuge tubes. Keep on ice.
- B5. Sonicate on ice four times for 5 seconds each.
- B6. Microcentrifuge for 10 minutes at 4°C, and transfer the supernatant to a new tube. The supernatant is the cell lysate. If necessary, lysate can be stored at -80°C.

C. Immunoprecipitation

- C1. Take 200 μl cell lysate and add primary antibody; incubate with gentle rocking overnight at 4°C.
- C2. Add protein A agarose beads (20 μl of 50% bead slurry). Incubate with gentle rocking for 1–3 hours at 4°C.
- C3. Microcentrifuge for 30 seconds at 4°C. Wash pellet five times with 500 μl of 1X cell lysis buffer. Keep on ice during washes.
- C4. Resuspend the pellet with 20 μl 3X SDS sample buffer. Vortex, then microcentrifuge for 30 seconds.
- C5. Heat the sample to 95–100°C for 2–5 minutes.
- C6. Load the sample (15–30 μl) on SDS-PAGE gel (12–15%).
- C7. Analyze sample by Western blotting (see Western Immunoblotting Protocol).