

#4022 Store at -20°C

MMP-2 Antibody



✓ 100 µl
(10 western blots)

Orders ■ 877-616-CELL (2355)
orders@cellsignal.com
Support ■ 877-678-TECH (8324)
info@cellsignal.com
Web ■ www.cellsignal.com

rev. 11/17/10

This product is intended for research purposes only. This product is not intended to be used for therapeutic or diagnostic purposes in humans or animals.

Entrez-Gene ID #4313
Swiss-Prot Acc. #P08253

Applications	Species Cross-Reactivity*	Molecular Wt.	Source
W Endogenous	H, (M, R)	64, 72 kDa	Rabbit**

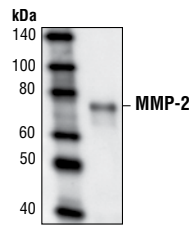
Background: Matrix metalloproteinase (MMP) is a family of proteases that target many extracellular proteins including other proteases, growth factors, cell surface receptors and adhesion molecules (1). Among the family members, MMP-2, MMP-3, MMP-7 and MMP-9 have been characterized as important factors for normal tissue remodeling during embryo development and wound healing, tumor invasion, angiogenesis, carcinogenesis and apoptosis (2-4). MMP activity is correlated with cancer development (2). One mechanism of MMP regulation is control of its expression during transcription (5). Once synthesized, MMP exists as a latent proenzyme. Maximum MMP activity requires proteolytic cleavage to generate active MMPs by releasing the inhibitory propeptide domain from the full length protein (5).

Specificity/Sensitivity: MMP-2 Antibody detects full length (proenzyme, 72 kDa) and cleaved (active enzyme, 64 kDa) MMP-2.

Source/Purification: Polyclonal antibodies are produced by immunizing rabbits with a synthetic peptide corresponding to residues between 107-117 of human MMP-2. Antibodies are purified by protein A and peptide affinity chromatography.

Background References:

- (1) McCawley, L.J. and Matrisian, L.M. (2001) *Curr. Opin. Cell Biol.* 13, 534-540.
- (2) Coussens, L.M. et al. (2002) *Science* 295, 2387-2391.
- (3) Sternlicht, M.D. et al. (1999) *Cell* 98, 137-146.
- (4) Vu, T.H. et al. (1998) *Cell* 93, 411-422.
- (5) Nagase, H. et al. (1990) *Biochemistry* 29, 5783-5789.



Western blot analysis of partially purified, concentrated, serum-free medium containing human MMP-2, using MMP-2 Antibody.

Storage: Supplied in 10 mM sodium HEPES (pH 7.5), 150 mM NaCl, 100 µg/ml BSA and 50% glycerol. Store at -20°C. Do not aliquot the antibody.

*Species cross-reactivity is determined by western blot.

**Anti-rabbit secondary antibodies must be used to detect this antibody.

Recommended Antibody Dilutions:

Western Blotting 1:1000

For application specific protocols please see the web page for this product at www.cellsignal.com.

Please visit www.cellsignal.com for a complete listing of recommended companion products.

IMPORTANT: For western blots, incubate membrane with diluted antibody in 5% w/v BSA, 1X TBS, 0.1% Tween-20 at 4°C with gentle shaking, overnight.

Applications Key: W—Western IP—Immunoprecipitation IHC—Immunohistochemistry ChIP—Chromatin Immunoprecipitation IF—Immunofluorescence F—Flow cytometry E-P—ELISA-Peptide
Species Cross-Reactivity Key: H—human M—mouse R—rat Hm—hamster Mk—monkey Mi—mink C—chicken Dm—D. melanogaster X—Xenopus Z—zebrafish B—bovine
Dg—dog Pg—pig Sc—S. cerevisiae Ce—C. elegans Hr—horse All—all species expected Species enclosed in parentheses are predicted to react based on 100% homology.