

LIN28B Antibody

✓ 100 µl
(10 western blots)

Orders ■ 877-616-CELL (2355)
orders@cellsignal.com
Support ■ 877-678-TECH (8324)
info@cellsignal.com
Web ■ www.cellsignal.com

New 07/09

This product is for *in vitro* research use only and is not intended for use in humans or animals.
This product is not intended for use as a therapeutic or in diagnostic procedures.

Applications	Species Cross-Reactivity*	Molecular Wt.	Source
W, IP Endogenous	H	32, 21 kDa	Rabbit**

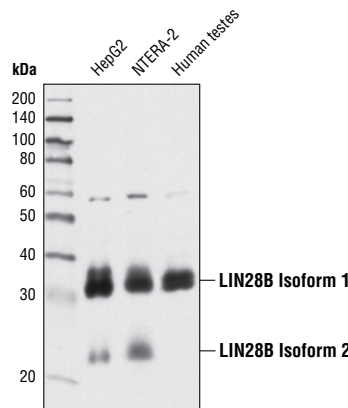
Background: LIN28A and LIN28B are conserved, developmentally regulated RNA binding proteins that inhibit the processing and maturation of the let-7 family of miRNAs (1,2). The let-7 miRNAs have been implicated in repression of oncogenes such as ras, myc and Hmga2 (3). It has recently been shown that LIN28A and LIN28B are upregulated in primary human tumors and in human cancer cell lines, their overexpression directly correlating to downregulation of Let-7 miRNAs (4). LIN28 genes are reported to be involved in primordial germ cell development and germ cell malignancy (5), and allelic variation in LIN28B is associated with regulating the timing of puberty in humans (6). Overexpression of LIN28A, in conjunction with oct4, Sox2 and Nanog, can reprogram human fibroblasts to pluripotent, ES-like cells (7).

Specificity/Sensitivity: LIN28B Antibody detects endogenous levels of total LIN28B protein.

Source/Purification: Polyclonal antibodies are produced by immunizing animals with a synthetic peptide (KLH-coupled) corresponding to amino acid residues at the carboxyl terminus of human LIN28B. Antibodies are purified by Protein A and peptide affinity chromatography.

Background References:

- (1) Balzer, E. and Moss, E.G. (2007) *RNA Biol* 4, 16–25.
- (2) Piskounova, E. et al. (2008) *J Biol Chem* 283, 21310–4.
- (3) Cho, W.C. (2007) *Mol Cancer* 6, 60.
- (4) Viswanathan, S.R. et al. (2009) *Nat Genet* 41, 843–8.
- (5) West, J.A. et al. (2009) *Nature*, Epub ahead of print.
- (6) Ong, K.K. et al. (2009) *Nat Genet*, Epub ahead of print.
- (7) Yu, J. et al. (2007) *Science* 318, 1917–20.



Western blot analysis of extracts from HepG2 and NTERA-2 cells, and human testes using LIN28B Antibody.

Entrez-Gene ID #9606
Swiss-Prot Acc. #Q6ZNI7

Storage: Supplied in 10 mM sodium HEPES (pH 7.5), 150 mM NaCl, 100 µg/ml BSA and 50% glycerol. Store at -20°C. Do not aliquot the antibody.

*Species cross-reactivity is determined by western blot.

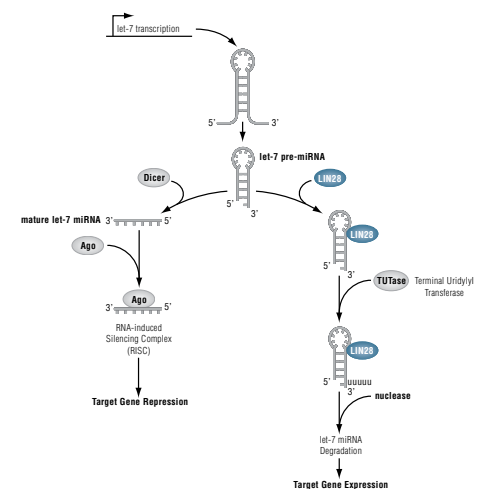
**Anti-rabbit secondary antibodies must be used to detect this antibody.

Recommended Antibody Dilutions:

Western blotting 1:1000
Immunoprecipitation 1:50

For application specific protocols please see the web page for this product at www.cellsignal.com.

Please visit www.cellsignal.com for a complete listing of recommended companion products.



IMPORTANT: For western blots, incubate membrane with diluted antibody in 5% w/v BSA, 1X TBS, 0.1% Tween-20 at 4°C with gentle shaking, overnight.

Applications Key: W—Western IP—Immunoprecipitation IHC—Immunohistochemistry ChIP—Chromatin Immunoprecipitation IF—Immunofluorescence F—Flow cytometry E-P—ELISA-Peptide
Species Cross-Reactivity Key: H—human M—mouse R—rat Hm—hamster Mk—monkey Mi—mink C—chicken Dm—D. melanogaster X—Xenopus Z—zebrafish B—bovine
Dg—dog Pg—pig Sc—S. cerevisiae All—all species expected Species enclosed in parentheses are predicted to react based on 100% homology.