

# Rabbit IgG Isotype Control (Alexa Fluor® 488 Conjugate)

✓ 100 µl

**Orders** ■ 877-616-CELL (2355)  
orders@cellsignaling.com

**Support** ■ 877-678-TECH (8324)  
info@cellsignaling.com

**Web** ■ www.cellsignaling.com

rev. 01/27/11

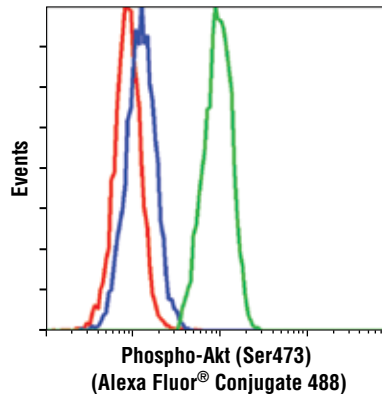
This product is intended for research purposes only. This product is not intended to be used for therapeutic or diagnostic purposes in humans or animals.

Concentration	Applications	Source
100 µg/ml	F	Rabbit IgG

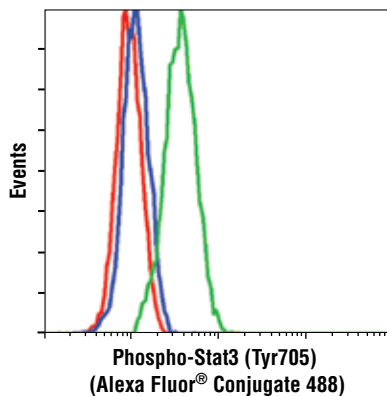
**Description:** Rabbit IgG was conjugated to Alexa Fluor® 488 fluorescent dye under optimal conditions and tested in-house for direct flow cytometric analysis of human and mouse cells.

**Background:** Isotype control antibodies are used to estimate the non-specific binding of target primary antibodies due to F<sub>c</sub> receptor binding or other protein-protein interactions. An isotype control antibody should have the same immunoglobulin type as the test antibody.

**Source/Purification:** The purified antibody is not directed against any known antigen. It was isolated from naive rabbit sera and prepared by affinity chromatography.



Flow cytometric analysis of Jurkat cells, using Rabbit IgG Isotype Control (Alexa Fluor® 488 Conjugate) (red) compared to Phospho-Akt (Ser473) (193H12) Rabbit mAb (Alexa Fluor® 488 Conjugate) #2336, untreated (green) or LY294002 and wortmannin treated (blue).



Flow cytometric analysis of Jurkat cells, using Rabbit IgG Isotype Control (Alexa Fluor® 488 Conjugate) (red) compared to Phospho-Stat3 (Tyr705) (D3A7) Rabbit mAb (Alexa Fluor® 488 Conjugate) #4323, untreated (blue) or IFN-α treated (green).

**Storage:** Supplied in PBS (pH 7.2), less than 0.1% sodium azide, 2 mg/ml BSA. Store at 4°C. *Protect from light. Do not freeze.*

**Recommended Antibody Dilutions:**

Flow Cytometry  
Match IgG concentration of primary antibody

**Directions for Use:** This control antibody must be diluted to the same concentration (not dilution) as the specific antibody used for analysis. Higher background fluorescence may result if excessive amounts of rabbit IgG isotype control are used. Do not use this antibody at a 1:50 dilution as recommended for other CST Alexa Fluor® conjugated antibodies.

**For application specific protocols please see the web page for this product at [www.cellsignaling.com](http://www.cellsignaling.com).**

**Please visit [www.cellsignaling.com](http://www.cellsignaling.com) for a complete listing of recommended companion products.**

The Alexa Fluor® dye antibody conjugates in this product are sold under license from Molecular Probes, Inc., for research use only, except for use in combination with DNA microarrays. The Alexa Fluor® dyes (except for Alexa Fluor® 430 dye) are covered by pending and issued patents.

Alexa Fluor® is a registered trademark of Molecular Probes, Inc.