

#4357 Store at -20°C

RagA (D8B5) Rabbit mAb



100 µl
 (10 western blots)

Orders ■ 877-616-CELL (2355)
 orders@cellsignal.com
Support ■ 877-678-TECH (8324)
 info@cellsignal.com
Web ■ www.cellsignal.com

rev. 02/08/10

This product is intended for research purposes only. This product is not intended to be used for therapeutic or diagnostic purposes in humans or animals.

Entrez-Gene ID #10670
Swiss-Prot Acc. #Q7L523

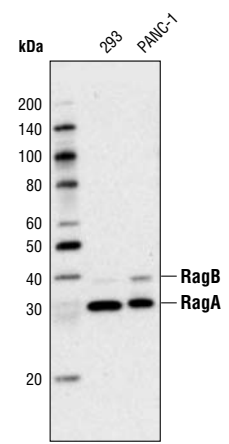
Applications	Species Cross-Reactivity*	Molecular Wt.	Isotype
W, IP Endogenous	H, M, R, Mk	30 kDa	Rabbit IgG**

Background: mTORC1 kinase complex is a critical component in regulating cell growth (1,2). Its activity is modulated by energy levels, growth factors and amino acids (3,4). Recent studies found that RagA, RagB, RagC and RagD, the four related GTPases, interact with raptor in mTORC1 (1,2). These interactions are both necessary and sufficient for mTORC1 activation in response to amino acid signals (1,2).

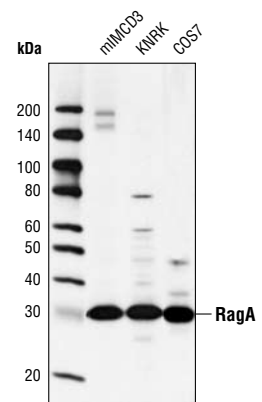
Specificity/Sensitivity: RagA (D8B5) Rabbit mAb detects endogenous levels of total RagA protein. It may also detect endogenous levels of total RagB protein.

Source/Purification: Monoclonal antibody is produced by immunizing animals with a synthetic peptide derived from the sequence of human RagA protein.

- Background References:**
- (1) Sancak, Y. et al. (2008) *Science* 320, 1496-501.
 - (2) Kim, E. et al. (2008) *Nat Cell Biol* 10, 935-45.
 - (3) Hay, N. and Sonenberg, N. (2004) *Genes Dev* 18, 1926-45.
 - (4) Wullschleger, S. et al. (2006) *Cell* 124, 471-84.



Western blot analysis of extracts from 293 and PANC-1 cells using RagA (D8B5) Rabbit mAb.



Western blot analysis of extracts from mIMCD3, KNRK and COS7 cells using RagA (D8B5) Rabbit mAb.

Storage: Supplied in 10 mM sodium HEPES (pH 7.5), 150 mM NaCl, 100 µg/ml BSA and 50% glycerol. Store at -20°C. Do not aliquot the antibody.

***Species cross-reactivity is determined by western blot.**

****Anti-rabbit secondary antibodies must be used to detect this antibody.**

Recommended Antibody Dilutions:
 Western blotting 1:1000
 Immunoprecipitation 1:50

For application specific protocols please see the web page for this product at www.cellsignal.com.

Please visit www.cellsignal.com for a complete listing of recommended companion products.

IMPORTANT: For western blots, incubate membrane with diluted antibody in 5% w/v BSA, 1X TBS, 0.1% Tween-20 at 4°C with gentle shaking, overnight.

Applications Key: W—Western IP—Immunoprecipitation IHC—Immunohistochemistry ChIP—Chromatin Immunoprecipitation IF—Immunofluorescence F—Flow cytometry E-P—ELISA-Peptide
Species Cross-Reactivity Key: H—human M—mouse R—rat Hm—hamster Mk—monkey Mi—mink C—chicken Dm—D. melanogaster X—Xenopus Z—zebrafish B—bovine
Dg—dog Pg—pig Sc—S. cerevisiae Ce—C. elegans Hr—horse All—all species expected Species enclosed in parentheses are predicted to react based on 100% homology.