

#4397 Store at -20°C

RBX1 Antibody



100 µl
(10 western blots)

Orders ■ 877-616-CELL (2355)
orders@cellsignal.com
Support ■ 877-678-TECH (8324)
info@cellsignal.com
Web ■ www.cellsignal.com

rev. 09/10/10

This product is intended for research purposes only. This product is not intended to be used for therapeutic or diagnostic purposes in humans or animals.

Applications	Species Cross-Reactivity*	Molecular Wt.	Source
W Endogenous	H, M, R, Mk	13 kDa	Rabbit**

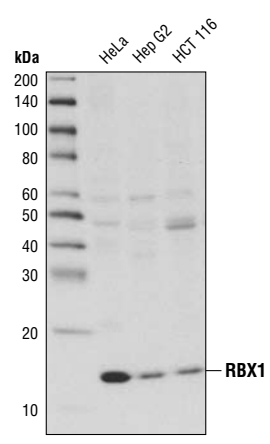
Background: RING-box protein 1 (RBX1 or ROC1) is an essential component of two distinct but structurally related E3 ubiquitin ligase complexes, the SCF complex and the CBC(VHL) complex (1). RBX1 mediates the neddylation of CUL1, which activates SCF E3 ligase by facilitating the ubiquitin transfer from E2 to substrates (2-4). The RING finger domain of RBX1 is required for ubiquitin ligation (5). Two evolutionarily conserved mammalian RBX family members, RBX1/ROC1 and RBX2/ROC2/SAG, have been identified (5). RBX1 is constitutively expressed and binds to Cul2/VHL, while stress inducible RBX2 binds to Cul-5/SOCS (6).

Specificity/Sensitivity: RBX1 Antibody detects endogenous levels of total RBX1 protein.

Source/Purification: Polyclonal antibodies are produced by immunizing animals with a synthetic peptide corresponding to residues near the amino terminus of human RBX1 protein. Antibodies were purified by protein A and peptide affinity chromatography.

Background References:

- (1) Zheng, N. et al. (2002) *Nature* 416, 703-9.
- (2) Kamura, T. et al. (1999) *Genes Dev* 13, 2928-33.
- (3) Morimoto, M. et al. (2003) *Biochem Biophys Res Commun* 301, 392-8.
- (4) Pan, Z.Q. et al. (2004) *Oncogene* 23, 1985-97.
- (5) Sun, Y. et al. (2001) *Antioxid Redox Signal* 3, 635-50.
- (6) Gu, Q. et al. (2007) *Cancer Res* 67, 3616-25.



Western blot analysis of extracts from HeLa, Hep G2, and HCT 116 cells using RBX1 Antibody.

Entrez-Gene ID #9978
Swiss-Prot Acc. #P62877

Storage: Supplied in 10 mM sodium HEPES (pH 7.5), 150 mM NaCl, 100 µg/ml BSA and 50% glycerol. Store at -20°C. Do not aliquot the antibody.

*Species cross-reactivity is determined by western blot.

**Anti-rabbit secondary antibodies must be used to detect this antibody.

Recommended Antibody Dilutions:

Western blotting 1:1000

For application specific protocols please see the web page for this product at www.cellsignal.com.

Please visit www.cellsignal.com for a complete listing of recommended companion products.

IMPORTANT: For western blots, incubate membrane with diluted antibody in 5% w/v BSA, 1X TBS, 0.1% Tween-20 at 4°C with gentle shaking, overnight.

Applications Key: W—Western IP—Immunoprecipitation IHC—Immunohistochemistry ChIP—Chromatin Immunoprecipitation IF—Immunofluorescence F—Flow cytometry E-P—ELISA-Peptide

Species Cross-Reactivity Key: H—human M—mouse R—rat Hm—hamster Mk—monkey Mi—mink C—chicken Dm—D. melanogaster X—Xenopus Z—zebrafish B—bovine

Dg—dog Pg—pig Sc—S. cerevisiae Ce—C. elegans Hr—horse All—all species expected Species enclosed in parentheses are predicted to react based on 100% homology.