

TWEAK Receptor/ Fn14 Antibody

100 µl
(10 Western mini-blots)



Orders ■ 877-616-CELL (2355)
orders@cellsignal.com

Support ■ 877-678-TECH (8324)
info@cellsignal.com

Web ■ www.cellsignal.com

New 11/05

This product is for *in vitro* research use only and is not intended for use in humans or animals.

Applications W, IP	Species Cross-Reactivity H, M, R	Molecular Wt. 14-17 kDa	Source Rabbit
-----------------------	-------------------------------------	----------------------------	------------------

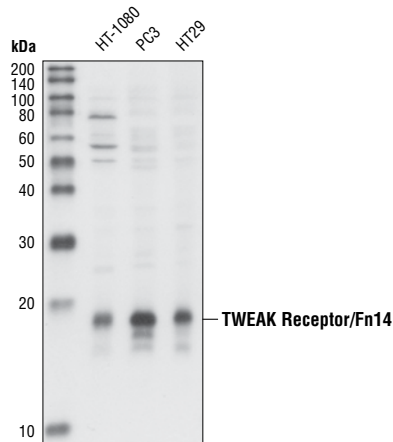
Background: The receptor for TWEAK, fibroblast growth factor-inducible 14 (Fn14), is a member of the TNF superfamily of receptors thought to be involved in cell growth, adhesion and migration (1). Its expression is regulated by a number of different growth factors (1,2). Elevated expression is also seen in some cancers including hepatocellular carcinomas (3), glioblastomas (4), and pancreatic cancer (5). The receptor contains a binding site for members of the TNFR-associated factor (TRAF) family that promotes the activation of NF-κB (1,6). Recent studies have suggested some therapeutic potential of TWEAK and its receptor signaling in regards to autoimmunity and cancer treatment (7-9).

Specificity/Sensitivity: TWEAK Receptor/Fn14 Antibody detects endogenous levels of total TWEAK Receptor/Fn14 protein.

Source/Purification: Polyclonal antibodies are produced by immunizing rabbits with a synthetic peptide (KLH-coupled) corresponding to residues near the carboxy terminus of the TWEAK Receptor/Fn14. Antibodies were purified by protein A and peptide affinity chromatography.

Background References:

- (1) Wiley, S.R. et al. (2001) *Immunity* 15, 837–46.
- (2) Nakayama, M. et al. (2003) *J. Immunol.* 170, 341–8.
- (3) Feng, S.L. et al. (2000) *Am. J. Pathol.* 156, 1253–61.
- (4) Tran, N.L. et al. (2003) *Am. J. Pathol.* 162, 1313–21.
- (5) Han, H. et al. (2002) *Cancer Res.* 62, 2890–6.
- (6) Brown, S.A. et al. (2003) *Biochem. J.* 371, 395–403.
- (7) Desplat-Jégo, S. et al. (2005) *Clin. Immunol.* 117, 15–23.
- (8) Mueller, A.M. et al. (2005) *J. Neuroimmunol.* 159, 55–65.
- (9) Winkles, J.A. et al. (2005) *Cancer Lett.*, May 7, [Epub ahead of print].



Western blot analysis of extracts from HT-1080, PC3 and HT29 cell lines, using TWEAK Receptor/Fn14 Antibody.

Storage: Supplied in 10 mM sodium HEPES (pH 7.5), 150 mM NaCl, 100 µg/ml BSA and 50% glycerol. Store at -20°C. Do not aliquot the antibody.

Recommended Antibody Dilutions:

Western blotting 1:1000
Immunoprecipitation 1:100

Companion Products:

TNF-α Antibody #3707
Phototope®-HRP Western Blot Detection System, Anti-rabbit IgG, HRP-linked Antibody #7071
Anti-rabbit IgG, HRP-linked Antibody #7074
Prestained Protein Marker, Broad Range (Premixed Format) #7720
Biotinylated Protein Ladder Detection Pack #7727
20X LumiGLO® Reagent and 20X Peroxide #7003

IMPORTANT: For Western blots, incubate membrane with diluted antibody in 5% w/v BSA, 1X TBS, 0.1% Tween-20 at 4°C with gentle shaking, overnight.

Applications Key: W—Western IP—Immunoprecipitation IHC—Immunohistochemistry IC—Immunocytochemistry IF—Immunofluorescence

Species Cross-Reactivity Key: H—human M—mouse R—rat Hm—hamster Mk—monkey Mi—mink C—chicken X—Xenopus Z—zebra fish B—bovine All—all species expected

Western Immunoblotting Protocol (Primary Ab Incubation In BSA)

For Western blots, incubate membrane with diluted antibody in 5% w/v BSA, 1X TBS, 0.1% Tween-20 at 4°C with gentle shaking, overnight.

A Solutions and Reagents

NOTE: Prepare solutions with Milli-Q or equivalently purified water.

- 1X Phosphate Buffered Saline (PBS)
- 1X SDS Sample Buffer:** 62.5 mM Tris-HCl (pH 6.8 at 25°C), 2% w/v SDS, 10% glycerol, 50 mM DTT, 0.01% w/v bromophenol blue or phenol red
- Transfer Buffer:** 25 mM Tris base, 0.2 M glycine, 20% methanol (pH 8.5)
- 10X Tris Buffered Saline (TBS):** To prepare 1 liter of 10X TBS: 24.2 g Tris base, 80 g NaCl; adjust pH to 7.6 with HCl (use at 1X).
- Nonfat Dry Milk (weight to volume [w/v])
- Blocking Buffer:** 1X TBS, 0.1% Tween-20 with 5% w/v nonfat dry milk; for 150 ml, add 15 ml 10X TBS to 135 ml water, mix. Add 7.5 g nonfat dry milk and mix well. While stirring, add 0.15 ml Tween-20 (100%).
- Wash Buffer:** 1X TBS, 0.1% Tween-20 (TBS/T)
- Bovine Serum Albumin (BSA)
- Primary Antibody Dilution Buffer:** 1X TBS, 0.1% Tween-20 with 5% BSA; for 20 ml, add 2 ml 10X TBS to 18 ml water, mix. Add 1.0 g BSA and mix well. While stirring, add 20 µl Tween-20 (100%).
- Phototope[®]-HRP Western Blot Detection System #7071:** Includes biotinylated protein ladder, secondary anti-rabbit (#7074) antibody conjugated to horseradish peroxidase (HRP), anti-biotin antibody conjugated to HRP, LumiGLO[®] chemiluminescent reagent and peroxide.
- Prestained Protein Marker, Broad Range (Premixed Format) #7720
- Biotinylated Protein Ladder Detection Pack #7727
- Blotting Membrane:** This protocol has been optimized for nitrocellulose membranes, which CST recommends. PVDF membranes may also be used.

B Protein Blotting

A general protocol for sample preparation is described below.

- Treat cells by adding fresh media containing regulator for desired time.
- Aspirate media from cultures; wash cells with 1X PBS; aspirate.
- Lyse cells by adding 1X SDS sample buffer (100 µl per well of 6-well plate or 500 µl per plate of 10 cm diameter plate). Immediately scrape the cells off the plate and transfer the extract to a microcentrifuge tube. Keep on ice.
- Sonicate for 10–15 seconds to shear DNA and reduce sample viscosity.
- Heat a 20 µl sample to 95–100°C for 5 minutes; cool on ice.
- Microcentrifuge for 5 minutes.
- Load 20 µl onto SDS-PAGE gel (10 cm x 10 cm).

NOTE: CST recommends loading prestained molecular weight markers (#7720, 10 µl/lane) to verify electrotransfer and biotinylated protein ladder (#7727, 10 µl/lane) to determine molecular weights.

- Electrotransfer to nitrocellulose or PVDF membrane.

C Membrane Blocking and Antibody Incubations

NOTE: Volumes are for 10 cm x 10 cm (100 cm²) of membrane; for different sized membranes, adjust volumes accordingly.

- (Optional) After transfer, wash nitrocellulose membrane with 25 ml TBS for 5 minutes at room temperature.
- Incubate membrane in 25 ml of blocking buffer for 1 hour at room temperature.
- Wash three times for 5 minutes each with 15 ml of TBS/T.
- Incubate membrane and primary antibody (at the appropriate dilution) in 10 ml primary antibody dilution buffer with gentle agitation overnight at 4°C.
- Wash three times for 5 minutes each with 15 ml of TBS/T.
- Incubate membrane with HRP-conjugated secondary antibody (1:2000) and HRP-conjugated anti-biotin antibody (1:1000) to detect biotinylated protein markers in 10 ml of blocking buffer with gentle agitation for 1 hour at room temperature.
- Wash three times for 5 minutes each with 15 ml of TBS/T.

D Detection of Proteins

- Incubate membrane with 10 ml LumiGLO[®] (0.5 ml 20X LumiGLO[®], 0.5 ml 20X Peroxide and 9.0 ml Milli-Q water) with gentle agitation for 1 minute at room temperature.

NOTE: LumiGLO[®] substrate can be further diluted if signal response is too fast.

- Drain membrane of excess developing solution (do not let dry), wrap in plastic wrap and expose to x-ray film. An initial 10-second exposure should indicate the proper exposure time.

NOTE: Due to the kinetics of the detection reaction, signal is most intense immediately following LumiGLO[®] incubation and declines over the following 2 hours.

Immunoprecipitation Protocol / (For Analysis By Western Immunoblotting)

A Solutions and Reagents

NOTE: Prepare solutions with Milli-Q or equivalently purified water.

1. 1X Phosphate Buffered Saline (PBS)
2. **1X Cell Lysis Buffer:** 20 mM Tris (pH 7.5), 150 mM NaCl, 1 mM EDTA, 1 mM EGTA, 1% Triton X-100, 2.5 mM Sodium pyrophosphate, 1 mM β -glycerophosphate, 1 mM Na_3VO_4 , 1 $\mu\text{g/ml}$ Leupeptin

NOTE: Add 1 mM PMSF immediately prior to use.

3. **Protein A or G Agarose Beads:** Add 5 ml of 1X PBS to 1.5 g of protein A agarose beads. Incubate for 2 hours at 4°C with gentle agitation; Pellet beads by centrifugation. Wash pellet twice with PBS. Resuspend beads in 1 volume of PBS. (Can be stored for 2 weeks at 4°C.)
4. **3X SDS Sample Buffer:** 187.5 mM Tris-HCl (pH 6.8 at 25°C), 6% w/v SDS, 30% glycerol, 150 mM DTT, 0.03% w/v bromophenol blue

B Preparing Cell Lysates

1. Aspirate media. Treat cells by adding fresh media containing regulator for desired time.
2. To harvest cells under nondenaturing conditions, remove media and rinse cells once with ice-cold PBS.

3. Remove PBS and add 0.5 ml ice-cold 1X cell lysis buffer to each plate (10 cm) and incubate the plates on ice for 5 minutes.
4. Scrape cells off the plates and transfer to microcentrifuge tubes. Keep on ice.
5. Sonicate samples on ice three times for 5 seconds each.
6. Microcentrifuge for 10 minutes at 14,000 X g, 4°C, and transfer the supernatant to a new tube. The supernatant is the cell lysate. If necessary, lysate can be stored at -80°C.

C Immunoprecipitation

1. Take 200 μl cell lysate and add primary antibody; incubate with gentle rocking overnight at 4°C.
2. Add either protein A or G agarose beads (20 μl of 50% bead slurry). Incubate with gentle rocking for 1–3 hours at 4°C.
3. Microcentrifuge for 30 seconds at 14,000 X g, 4°C. Wash pellet five times with 500 μl of 1X cell lysis buffer. Microcentrifuge after each wash. Keep on ice during washes.
4. Resuspend the pellet with 20 μl 3X SDS sample buffer. Vortex, then microcentrifuge for 30 seconds.
5. Heat the sample to 95–100°C for 2–5 minutes and microcentrifuge for 1 minute at 14,000 X g.
6. Load the sample (15–30 μl) on SDS-PAGE gel (12–15%).
7. Analyze sample by Western blotting (see Western Immunoblotting Protocol).