

Anti-Rabbit IgG (H+L), F(ab')₂ Fragment (Alexa Fluor® 555 Conjugate)

✓ 250 µl

Orders ■ 877-616-CELL (2355)
orders@cellsignal.com

Support ■ 877-678-TECH (8324)
info@cellsignal.com

Web ■ www.cellsignal.com

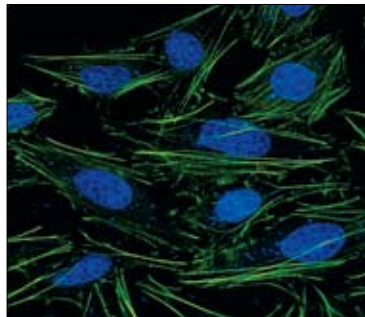
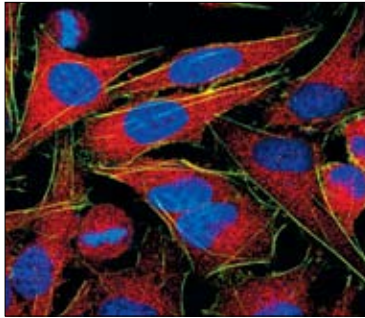
rev. 06/24/10

This product is intended for research purposes only. This product is not intended to be used for therapeutic or diagnostic purposes in humans or animals.

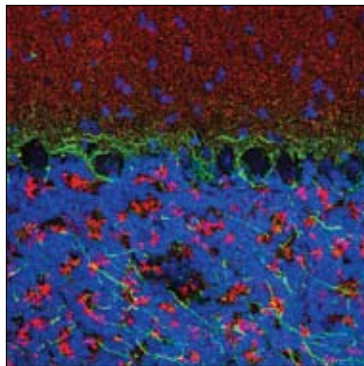
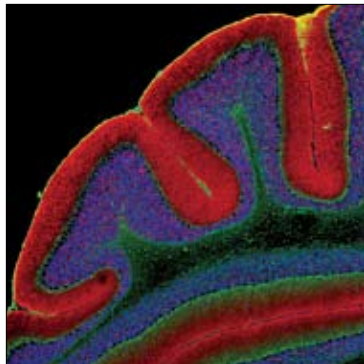
Description: Anti-Rabbit IgG (H+L) F(ab')₂ Fragment was conjugated to Alexa Fluor® 555 fluorescent dye under optimal conditions and formulated at 2 mg/ml. This F(ab')₂ fragment results in less non-specific binding to cells through Fc receptors.

Background: Fluorescent anti-species IgG conjugates are ideal for flow cytometry and immunofluorescence. Cell Signaling Technology's strict quality control procedures assure that each conjugate provides optimal specificity and fluorescence.

Specificity/Sensitivity: F(ab')₂ fragments are prepared from goat antibodies that have been adsorbed against pooled human serum, mouse serum, plasmacytoma/hybridoma proteins and purified human paraproteins.



Confocal immunofluorescent analysis of HeLa cells using with MEK1/2 (47E6) Rabbit mAb #9126 detected with Anti-Rabbit IgG (H+L), F(ab')₂ Fragment (Alexa Fluor® 555 Conjugate) (red, upper) compared to an isotype control (lower). Actin filaments have been labeled with fluorescein phalloidin (green). Blue pseudocolor = DRAQ5® #4084 (fluorescent DNA dye).



Confocal immunofluorescent analysis of mouse cerebellum using α -Synuclein Antibody (IF Preferred) #2628 detected with Anti-Rabbit IgG (H+L), F(ab')₂ Fragment (Alexa Fluor® 555 Conjugate) (red) and Neurofilament-L (DA2) Mouse mAb #2835 detected with Anti-Mouse IgG (H+L), F(ab')₂ Fragment (Alexa Fluor® 488 Conjugate) #4408 (green). Blue pseudocolor = DRAQ5® #4084 (fluorescent DNA dye).

Storage: Supplied in 0.1 M sodium phosphate, 0.1 M sodium chloride, 2 mM EDTA, 1% glycerol, 5 mM sodium azide, pH 7.5. Store at 4°C. Protect from light. *Do not freeze.*

Recommended Antibody Dilutions:

The optimal dilution of the anti-species antibody should be determined for each application. However, a final dilution of 1:1000 should yield acceptable results for most immunofluorescent applications.

For application specific protocols please see the web page for this product at www.cellsignal.com.

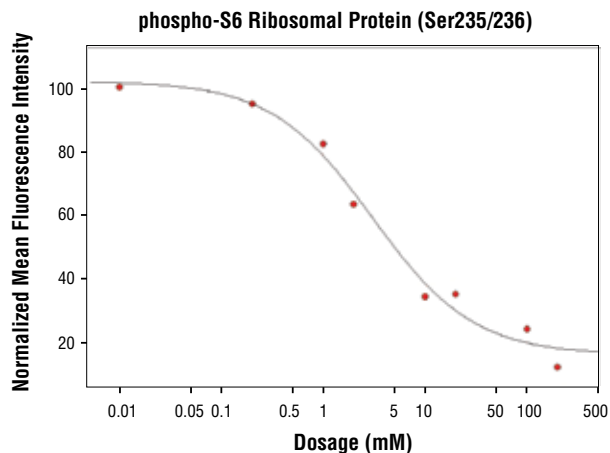
Please visit www.cellsignal.com for a complete listing of recommended companion products.

This product is provided under an agreement between Life Technologies Corporation and Cell Signaling Technology, Inc., and the manufacture, use, sale or import of antibody conjugate in this product is subject to one or more US patents and corresponding non-US equivalents, owned or controlled by Life Technologies Corporation or its affiliates. The purchase of this product conveys to the buyer the non-transferable right to use the purchased amount of the product and components of the product only in research conducted by the buyer (whether the buyer is an academic or for-profit entity), for immunocytochemistry, high content screening (HCS) analysis, or flow cytometry applications. The sale of this product is expressly conditioned on the buyer not using the product or its components (1) in manufacturing; (2) to provide a service, information, or data to an unaffiliated third party for payment; (3) for therapeutic, diagnostic or prophylactic purposes; (4) resale, whether or not such product or its components are resold for use in research; or for any other commercial purpose. For information on purchasing a license to this product for purposes other than research, contact Life Technologies Corporation, Cellular Analysis Business Unit, Business Development, 29851 Willow Creek Road, Eugene, OR 97402. Tel: (541) 465-8300. Fax: (541) 335-0354.

Alexa Fluor® is a registered trademark of Molecular Probes, Inc.

DRAQ5® is a registered trademark of Biostatus Limited.

Acumen® is a registered trademarks of TTP Labtech



High content analysis of A549 cells exposed to varying concentrations of LY294002 #9901 for 3 hrs, followed by 100 ng/mL EGF for 20 minutes. With increasing concentrations of LY294002, a significant decrease (~5 fold) in phospho-S6 Ribosomal Protein (Ser235/236) signal as compared to the uninhibited control was observed. When using phospho-S6 as a measurement, the IC₅₀ of this compound was 3.06 µM. Data were generated on the Acumen® HCS platform using Anti-Rabbit IgG (H+L), F(ab')₂ Fragment (Alexa Fluor® 555 Conjugate).