

Oct-1 Antibody

✓ 100 µl

Orders ■ 877-616-CELL (2355)
orders@cellsignaling.com

Support ■ 877-678-TECH (8324)
info@cellsignaling.com

Web ■ www.cellsignaling.com

rev. 06/18/10

This product is intended for research purposes only. This product is not intended to be used for therapeutic or diagnostic purposes in humans or animals.

Applications	Species Cross-Reactivity*	Molecular Wt.	Source
W	H	90 kDa	Rabbit**
Endogenous			

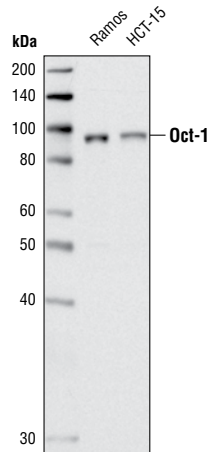
Background: Oct-1 (POU2F1) is a ubiquitously expressed, octamer-binding transcription factor containing a POU domain with a homeobox subdomain (1). Oct-1 has been shown to interact with several transcription factors in mediating specific gene expression, including SNAPc (2), OBF-1 (a B-cell transcriptional coactivator protein) (3), TFIIIB (4), and TBP (TATA-box-binding protein) (5). Its POU DNA-binding domain allows Oct-1 the flexibility to facilitate the binding and recruitment of several tissue-specific cofactors to either positively or negatively regulate a variety of genes, exerting an important role in development (6).

Specificity/Sensitivity: Oct-1 Antibody detects endogenous levels of total Oct-1 protein.

Source/Purification: Polyclonal antibodies are produced by immunizing animals with a synthetic peptide corresponding to amino acids surrounding Leu362 of human Oct-1. Antibodies are purified by protein A and peptide affinity chromatography.

Background References:

- (1) Sturm, R.A. et al. (1988) *Genes Dev* 2, 1582-99.
- (2) Mittal, V. et al. (1996) *Mol Cell Biol* 16, 1955-65.
- (3) Strubin, M. et al. (1995) *Cell* 80, 497-506.
- (4) Nakshatri, H. et al. (1995) *J Biol Chem* 270, 19613-23.
- (5) Zwilling, S. et al. (1994) *Nucleic Acids Res* 22, 1655-62.
- (6) Schonemann, M.D. et al. (1998) *Adv Exp Med Biol* 449, 39-53.



Western blot analysis of Ramos and HCT-15 cell extracts using Oct-1 Antibody.

Entrez-Gene ID #5451
Swiss-Prot Acc. #P14859

Storage: Supplied in 10 mM HEPES (pH 7.5), 150 mM NaCl, 100 µg/ml BSA and 50% glycerol. Store at -20°C. Do not aliquot the antibody.

*Species cross-reactivity is determined by western blot.

**Anti-rabbit secondary antibodies must be used to detect this antibody.

Recommended Antibody Dilutions:

Western blotting 1:1000

For application specific protocols please see the web page for this product at www.cellsignaling.com.

Please visit www.cellsignaling.com for a complete listing of recommended companion products.

IMPORTANT: For western blots, incubate membrane with diluted antibody in 5% w/v BSA, 1X TBS, 0.1% Tween-20 at 4°C with gentle shaking, overnight.

Applications Key: W—Western IP—Immunoprecipitation IHC—Immunohistochemistry ChIP—Chromatin Immunoprecipitation IF—Immunofluorescence F—Flow cytometry E-P—ELISA-Peptide
Species Cross-Reactivity Key: H—human M—mouse R—rat Hm—hamster Mk—monkey Mi—mink C—chicken Dm—D. melanogaster X—Xenopus Z—zebrafish B—bovine
 Dg—dog Pg—pig Sc—S. cerevisiae Ce—C. elegans Hr—horse All—all species expected Species enclosed in parentheses are predicted to react based on 100% homology.