

#4546 Store at -20°C

Keratin 8/18 (C51) Mouse mAb



100 µl
 (10 western blots)

Orders ■ 877-616-CELL (2355)
 orders@cellsignal.com
Support ■ 877-678-TECH (8324)
 info@cellsignal.com
Web ■ www.cellsignal.com

rev. 07/28/10

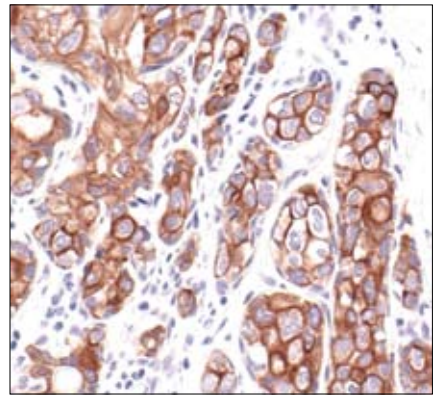
This product is intended for research purposes only. This product is not intended to be used for therapeutic or diagnostic purposes in humans or animals.

Applications	Species Cross-Reactivity*	Molecular Wt.	Isotype
W, IHC-P, F	H, Mk	46 kDa Keratin 18, 55 kDa Keratin 8	Mouse IgG1**

Background: Keratins (cytokeratins) are intermediate filament proteins that are mainly expressed in epithelial cells. Keratins assemble into filaments, forming heterodimers of an acidic keratin (or type I keratin, keratins 9 to 23) and a basic keratin (or type II keratin, keratins 1 to 8) (1,2). Keratin isoforms demonstrate tissue- and differentiation-specific profiles, which make them useful as biomarkers (1). Mutations in keratin genes are associated with skin disorders, liver and pancreatic diseases, and inflammatory intestinal diseases (3-6).

Specificity/Sensitivity: Keratin 8/18 (C51) Mouse mAb detects endogenous levels of total keratins 8 and 18. The antibody does not cross-react with other keratins.

Source/Purification: Monoclonal antibody (isotype: IgG1) is produced by immunizing a BALB/c mouse with a cytoskeleton preparation from HeLa cells.



Immunohistochemical analysis of paraffin-embedded human breast carcinoma using Keratin 8/18 (C51) Mouse mAb.

Storage: Supplied in 10 mM sodium HEPES (pH 7.5), 150 mM NaCl, 100 µg/ml BSA, 50% glycerol and less than 0.02% sodium azide. Store at -20°C. Do not aliquot the antibody.

***Species cross-reactivity is determined by western blot.**

****Anti-mouse secondary antibodies must be used to detect this antibody.**

Recommended Antibody Dilutions:

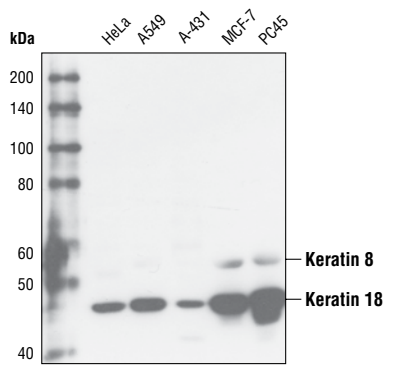
Western Blotting	1:1000
Immunohistochemistry (Paraffin)	1:25
Flow Cytometry	1:50

For application specific protocols please see the web page for this product at www.cellsignal.com.

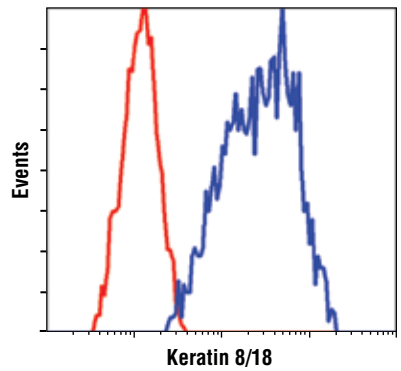
Please visit www.cellsignal.com for a complete listing of recommended companion products.

Background References:

- (1) Moll, R. et al. (1982) *Cell* 31, 11–24.
- (2) Chang, L. and Goldman, R.D. (2004) *Nat. Rev. Mol. Cell Biol.* 5, 601–613.
- (3) Ramaekers, F.C. and Bosman, F.T. (2004) *J. Pathol.* 204, 351–354.
- (4) Lane, E.B. and McLean, W.H. (2004) *J. Pathol.* 204, 355–366.
- (5) Zatloukal, K. et al. (2004) *J. Pathol.* 204, 367–376.
- (6) Owens, D.W. and Lane, E.B. (2004) *J. Pathol.* 204, 377–385.



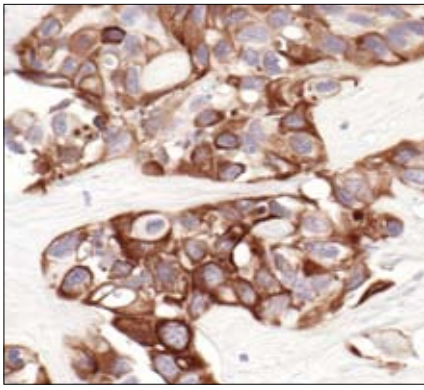
Western blot analysis of extracts from various cell lines using Keratin 8/18 (C51) Mouse mAb.



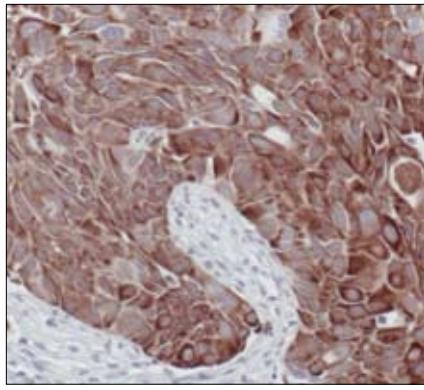
Flow cytometric analysis of MCF-7 cells using Keratin 8/18 (C51) Mouse mAb (blue) compared to a nonspecific negative control antibody (red).

IMPORTANT: For western blots, incubate membrane with diluted antibody in 5% w/v nonfat dry milk, 1X TBS, 0.1% Tween-20 at 4°C with gentle shaking, overnight.

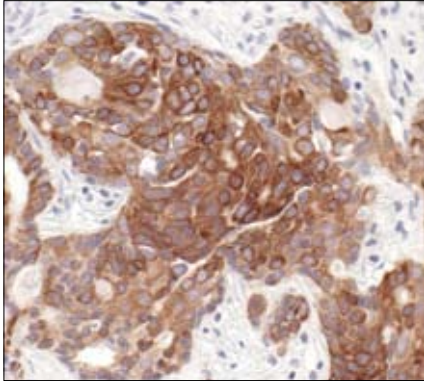
Applications Key: W—Western IP—Immunoprecipitation IHC—Immunohistochemistry ChIP—Chromatin Immunoprecipitation IF—Immunofluorescence F—Flow cytometry E-P—ELISA-Peptide
Species Cross-Reactivity Key: H—human M—mouse R—rat Hm—hamster Mk—monkey Mi—mink C—chicken Dm—D. melanogaster X—Xenopus Z—zebrafish B—bovine
 Dg—dog Pg—pig Sc—S. cerevisiae Ce—C. elegans Hr—horse All—all species expected Species enclosed in parentheses are predicted to react based on 100% homology.



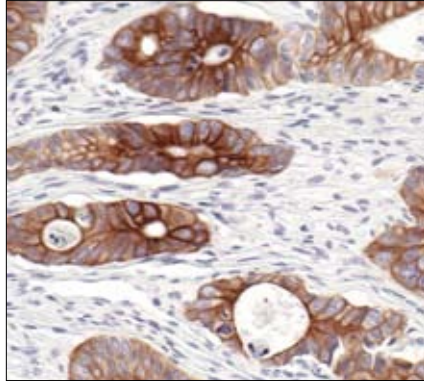
Immunohistochemical analysis of paraffin-embedded human prostate carcinoma using Keratin 8/18 (C51) Mouse mAb.



Immunohistochemical analysis of paraffin-embedded H358 xenograft using Keratin 8/18 (C51) Mouse mAb.



Immunohistochemical analysis of paraffin-embedded human squamous cell carcinoma of the lung using Keratin 8/18 (C51) Mouse mAb.



Immunohistochemical analysis of paraffin-embedded human colon carcinoma using Keratin 8/18 (C51) Mouse mAb.