

**#4558** Store at -20°C

# Keratin 19 (BA17) Mouse mAb



100 µl  
 (10 western blots)

**Orders** ■ 877-616-CELL (2355)  
 orders@cellsignaling.com  
**Support** ■ 877-678-TECH (8324)  
 info@cellsignaling.com  
**Web** ■ www.cellsignaling.com

rev. 10/13/10

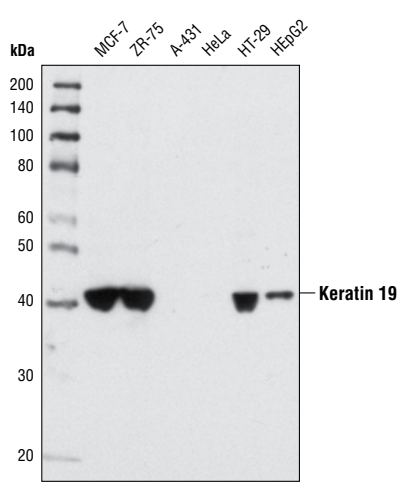
This product is intended for research purposes only. This product is not intended to be used for therapeutic or diagnostic purposes in humans or animals.

Applications	Species Cross-Reactivity*	Molecular Wt.	Isotype
W, IHC-P Endogenous	H	40 kDa	Mouse IgG1**

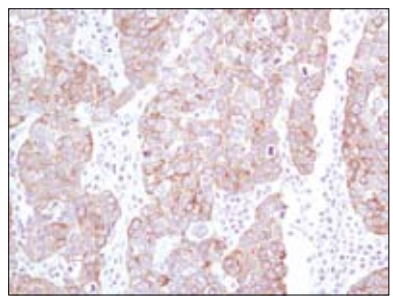
**Background:** Keratins (cytokeratins) are intermediate filament proteins that are mainly expressed in epithelial cells. Keratins assemble into filaments, forming heterodimers of an acidic keratin (or type I keratin, keratins 9 to 23) and a basic keratin (or type II keratin, keratins 1 to 8) (1,2). Keratin isoforms demonstrate tissue- and differentiation-specific profiles, which make them useful as biomarkers (1). Mutations in keratin genes are associated with skin disorders, liver and pancreatic diseases, and inflammatory intestinal diseases (3-6).

**Specificity/Sensitivity:** Keratin 19 (BA17) Mouse mAb detects endogenous levels of total keratin 19 protein. The antibody does not cross-react with other keratin proteins.

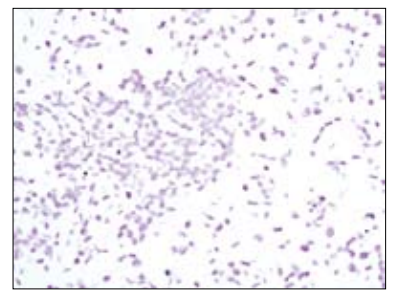
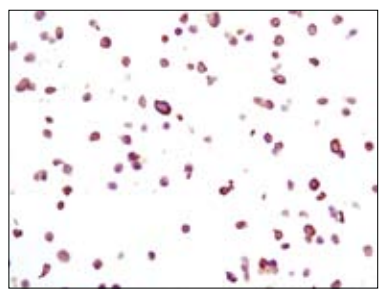
**Source/Purification:** Monoclonal antibody is produced by immunizing animals with detergent-insoluble extract of human mammary epithelial organoids.



Western blot analysis of extracts from various cell types using Keratin 19 (BA17) Mouse mAb. As expected, the protein is absent in A431 and HeLa cells.



Immunohistochemical analysis of paraffin-embedded human breast carcinoma using Keratin 19 (BA17) Mouse mAb.



Immunohistochemical analysis of paraffin-embedded MCF-7 cells (positive, left) and A431 cells (negative, right), using Keratin 19 (BA17) Mouse mAb.

**Entrez-Gene ID** #3880  
**Swiss-Prot Acc.** #P08727

**Storage:** Supplied in 10 mM sodium HEPES (pH 7.5), 150 mM NaCl, 100 µg/ml BSA, 50% glycerol and less than 0.02% sodium azide. Store at -20°C. Do not aliquot the antibody.

**\*Species cross-reactivity is determined by western blot.**

**\*\*Anti-mouse secondary antibodies must be used to detect this antibody.**

**Recommended Antibody Dilutions:**

Western blotting	1:1000
Immunohistochemistry (Paraffin)	1:200
Unmasking buffer:	Citrate
Antibody diluent:	SignalStain® Antibody Diluent #8112

**For application specific protocols please see the web page for this product at [www.cellsignaling.com](http://www.cellsignaling.com).**

**Please visit [www.cellsignaling.com](http://www.cellsignaling.com) for a complete listing of recommended companion products.**

**Background References:**

- (1) Moll, R. et al. (1982) *Cell* 31, 11–24.
- (2) Chang, L. and Goldman, R.D. (2004) *Nat. Rev. Mol. Cell Biol.* 5, 601–613.
- (3) Ramaekers, F.C. and Bosman, F.T. (2004) *J. Pathol.* 204, 351–354.
- (4) Lane, E.B. and McLean, W.H. (2004) *J. Pathol.* 204, 355–366.
- (5) Zatloukal, K. et al. (2004) *J. Pathol.* 204, 367–376.
- (6) Owens, D.W. and Lane, E.B. (2004) *J. Pathol.* 204, 377–385.

**IMPORTANT: For western blots, incubate membrane with diluted antibody in 5% w/v nonfat dry milk, 1X TBS, 0.1% Tween-20 at 4°C with gentle shaking, overnight.**

**Applications Key:** W—Western IP—Immunoprecipitation IHC—Immunohistochemistry ChIP—Chromatin Immunoprecipitation IF—Immunofluorescence F—Flow cytometry E-P—ELISA-Peptide  
**Species Cross-Reactivity Key:** H—human M—mouse R—rat Hm—hamster Mk—monkey Mi—mink C—chicken Dm—D. melanogaster X—Xenopus Z—zebrafish B—bovine  
 Dg—dog Pg—pig Sc—S. cerevisiae Ce—C. elegans Hr—horse All—all species expected Species enclosed in parentheses are predicted to react based on 100% homology.