

# Bik Antibody

✓ 100 µl  
(10 western blots)

**Orders** ■ 877-616-CELL (2355)  
orders@cellsignaling.com

**Support** ■ 877-678-TECH (8324)  
info@cellsignaling.com

**Web** ■ www.cellsignaling.com

rev.05/18/11

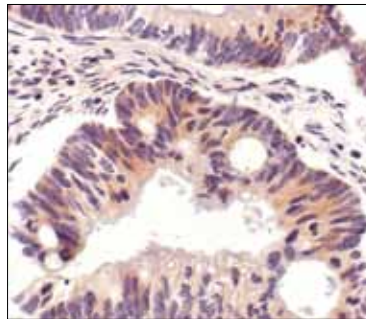
This product is intended for research purposes only. This product is not intended to be used for therapeutic or diagnostic purposes in humans or animals.

Applications	Species Cross-Reactivity*	Molecular Wt.	Source
W, IHC-P Endogenous	H	20 kDa	Rabbit**

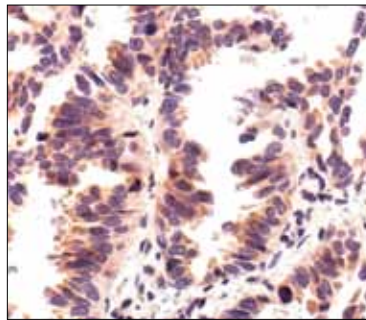
**Background:** Bik/Nbk (Bcl-2-interacting killer/natural born killer) is a potent pro-apoptotic protein belonging to a group of Bcl-2 family members that includes Bad, Bid, Bim, Hrk, and Noxa, containing a BH3 domain but lacking other conserved domains, BH1 or BH2 (1,2). Functionally, Bik is able to bind to and antagonize anti-apoptotic Bcl-2 family members including Bcl-2, Bcl-xL, and viral homologs E1B-19K and EBV-BHFR1. The BH3 domain of Bik is essential for its apoptotic activity and interaction with survival proteins (3). Phosphorylation of Bik is correlated with an increase in its pro-apoptotic activity (4).

**Specificity/Sensitivity:** Bik Antibody detects endogenous levels of Bik protein. It does not cross-react with other Bcl-2 family members.

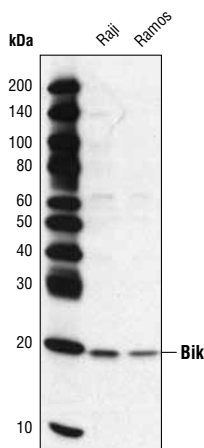
**Source/Purification:** Polyclonal antibodies are produced by immunizing animals with a synthetic peptide corresponding to residues in the amino-terminus of Bik. Antibodies are purified by protein A and peptide affinity chromatography.



Immunohistochemical analysis of paraffin-embedded human colon carcinoma, using Bik Antibody.



Immunohistochemical analysis of paraffin-embedded human lung carcinoma, showing cytoplasmic localization, using Bik Antibody.



Western blot analysis of extracts from Raji and Ramos cell lines using Bik Antibody.

**IMPORTANT: For western blots, incubate membrane with diluted antibody in 5% w/v BSA, 1X TBS, 0.1% Tween-20 at 4°C with gentle shaking, overnight.**

Entrez-Gene ID #638  
Swiss-Prot Acc. #Q13323

**Storage:** Supplied in 10 mM sodium HEPES (pH 7.5), 150 mM NaCl, 100 µg/ml BSA and 50% glycerol. Store at -20°C. Do not aliquot the antibody.

\*Species cross-reactivity is determined by western blot.

\*\*Anti-rabbit secondary antibodies must be used to detect this antibody.

#### Recommended Antibody Dilutions:

Western Blotting 1:1000  
Immunohistochemistry (Paraffin) 1:150†

Unmasking buffer: Citrate

Antibody diluent: SignalStain® Antibody Diluent #8112

Detection reagent: SignalStain® Boost (HRP, Rabbit) #8114

†Optimal IHC dilutions determined using SignalStain® Boost IHC Detection Reagent.

For application specific protocols please see the web page for this product at [www.cellsignaling.com](http://www.cellsignaling.com).

Please visit [www.cellsignaling.com](http://www.cellsignaling.com) for a complete listing of recommended companion products.

#### Background References:

- (1) Boyd, J.M. et al. (1995) *Oncogene* 11, 1921-1928.
- (2) Han, J. et al. (1996) *Mol. Cell. Biol.* 16, 5857-5864.
- (3) Tong, Y. et al. (2001) *Mol. Cancer Ther.* 1, 95-102.
- (4) Verma, S. et al. (2001) *J. Biol. Chem.* 276, 4671-4676