

MAML1 Antibody

✓ 100 µl
(10 western blots)

Orders ■ 877-616-CELL (2355)
orders@cellsignal.com
Support ■ 877-678-TECH (8324)
info@cellsignal.com
Web ■ www.cellsignal.com

rev. 01/26/11

This product is intended for research purposes only. This product is not intended to be used for therapeutic or diagnostic purposes in humans or animals.

Applications	Species Cross-Reactivity*	Molecular Wt.	Source
W, IP, IF-IC Endogenous	H	130 kDa	Rabbit**

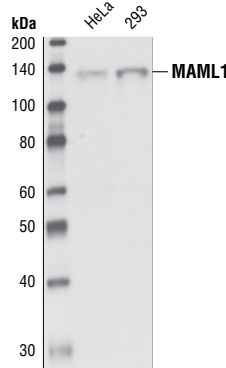
Background: Mastermind-like (MAML) family of proteins are homologs of *Drosophila* Mastermind. The family is composed of three members in mammals: MAML1, MAML2 and MAML3 (1,2). MAML complexes with the intracellular portion of Notch (ICN) and the transcription factor CSL (RBP-Jκ) to regulate Notch target gene expression (3-5). MAML1 also interacts with MEF2C (myocyte enhancer factor 2C) to regulate myogenesis (6). MAML2 is found frequently to be fused with Mucoepidermoid carcinoma translocated gene 1 (MECT1, also know as WAMTP1 or TORC1) in patients with mucoepidermoid carcinomas and Warthin's tumors (7).

Specificity/Sensitivity: MAML1 Antibody detects endogenous levels of total MAML1 protein. It does not cross-react with MAML2 and MAML3.

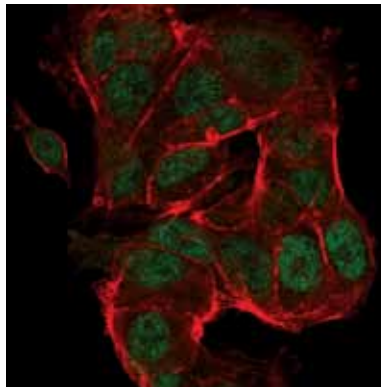
Source/Purification: Polyclonal antibodies are produced by immunizing animals with a synthetic peptide corresponding to residues surrounding His 810 of human MAML1. Antibodies are purified by protein A and peptide affinity chromatography.

Background References:

- (1) Wu, L. et al. (2002) *Mol. Cell Biol.* 22, 7688-7700.
- (2) Lin, S.E. et al. (2002) *J. Biol. Chem.* 277, 50612-50620.
- (3) Kitagawa, M. et al. (2001) *Mol. Cell Biol.* 21, 4337-4346.
- (4) Nam, Y. et al. (2003) *J. Biol. Chem.* 278, 21232-21239.
- (5) Nam, Y. et al. (2006) *Cell* 124, 973-983.
- (6) Shen, H. et al. (2006) *Genes Dev.* 20, 675-688.
- (7) Tonon, G. et al. (2003) *Nat. Genet.* 33, 208-213.



Western blot analysis of total cell lysates from HeLa and 293 cells, using MAML1 antibody.



Confocal immunofluorescent analysis of MCF-7 cells labeled with MAML1 Antibody (green). Actin filaments have been labeled with Alexa Fluor® 555 phalloidin (red).

Entrez-Gene ID #9794
Swiss-Prot Acc. #Q92585

Storage: Supplied in 10 mM sodium HEPES (pH 7.5), 150 mM NaCl, 100 µg/ml BSA and 50% glycerol. Store at -20°C. Do not aliquot the antibody.

*Species cross-reactivity is determined by western blot.

**Anti-rabbit secondary antibodies must be used to detect this antibody.

Recommended Antibody Dilutions:

Western blotting	1:1000
Immunoprecipitation	1:50
Immunofluorescence (IF-IC)	1:100

For application specific protocols please see the web page for this product at www.cellsignal.com.

Please visit www.cellsignal.com for a complete listing of recommended companion products.

Alexa Fluor® is a registered trademark of Molecular Probes, Inc.

IMPORTANT: For western blots, incubate membrane with diluted antibody in 5% w/v nonfat dry milk, 1X TBS, 0.1% Tween-20 at 4°C with gentle shaking, overnight.

Applications Key: W—Western IP—Immunoprecipitation IHC—Immunohistochemistry ChIP—Chromatin Immunoprecipitation IF—Immunofluorescence F—Flow cytometry E-P—ELISA-Peptide
Species Cross-Reactivity Key: H—human M—mouse R—rat Hm—hamster Mk—monkey Mi—mink C—chicken Dm—D. melanogaster X—Xenopus Z—zebrafish B—bovine
Dg—dog Pg—pig Sc—S. cerevisiae Ce—C. elegans Hr—horse All—all species expected Species enclosed in parentheses are predicted to react based on 100% homology.