

#4618 Store at -20°C

MAML2 Antibody

✓ 100 µl
(10 Western mini-blot)

Orders ■ 877-616-CELL (2355)
orders@cellsignal.com
Support ■ 877-678-TECH (8324)
info@cellsignal.com
Web ■ www.cellsignal.com

rev. 08/24/09

This product is for *in vitro* research use only and is not intended for use in humans or animals.
This product is not intended for use as a therapeutic or in diagnostic procedures.

Entrez-Gene ID #84441
Swiss-Prot Acc. #Q8IZL2

Applications	Species Cross-Reactivity*	Molecular Wt.	Source
W, IP Endogenous	H, M, R, Mk	160 kDa	Rabbit**

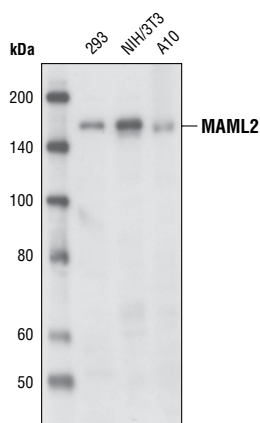
Background: Mastermind-like (MAML) family of proteins are homologs of *Drosophila* Mastermind. The family is composed of three members in mammals: MAML1, MAML2 and MAML3 (1,2). MAML complexes with the intracellular portion of Notch (ICN) and the transcription factor CSL (RBP-Jκ) to regulate Notch target gene expression (3-5). MAML1 also interacts with MEF2C (myocyte enhancer factor 2C) to regulate myogenesis (6). MAML2 is frequently found to be fused with Mucoepidermoid carcinoma translocated gene 1 (MECT1, also known as WAMTP1 or TORC1) in patients with mucoepidermoid carcinomas and Warthin's tumors (7).

Specificity/Sensitivity: MAML2 Antibody detects endogenous levels of total MAML2 protein. It does not cross-react with MAML1 and MAML3.

Source/Purification: Polyclonal antibodies are produced by immunizing animals with a synthetic peptide (KLH-coupled) corresponding to residues surrounding Asp800 of human MAML2. Antibodies are purified by protein A and peptide affinity chromatography.

Background References:

- (1) Wu, L. et al. (2002) *Mol. Cell Biol.* 22, 7688–7700.
- (2) Lin, S.E. et al. (2002) *J. Biol. Chem.* 277, 50612–50620.
- (3) Kitagawa, M. et al. (2001) *Mol. Cell Biol.* 21, 4337–4346.
- (4) Nam, Y. et al. (2003) *J. Biol. Chem.* 278, 21232–21239.
- (5) Nam, Y. et al. (2006) *Cell* 124, 973–983.
- (6) Shen, H. et al. (2006) *Genes Dev.* 20, 675–688.
- (7) Tonon, G. et al. (2003) *Nat. Genet.* 33, 208–213.



Western blot analysis of total cell lysates from 293, NIH/3T3 and A10 cells, using MAML2 antibody.

Storage: Supplied in 10 mM sodium HEPES (pH 7.5), 150 mM NaCl, 100 µg/ml BSA and 50% glycerol. Store at -20°C. Do not aliquot the antibody.

*Species cross-reactivity is determined by western blot.

**Anti-rabbit secondary antibodies must be used to detect this antibody.

Recommended Antibody Dilutions:

Western blotting 1:1000
Immunoprecipitation 1:50

For application specific protocols please see the web page for this product at www.cellsignal.com.

Please visit www.cellsignal.com for a complete listing of recommended companion products.

IMPORTANT: For Western blots, incubate membrane with diluted antibody in 5% w/v nonfat dry milk, 1X TBS, 0.1% Tween-20 at 4°C with gentle shaking, overnight.

Applications Key: W—Western IP—Immunoprecipitation IHC—Immunohistochemistry ChIP—Chromatin Immunoprecipitation IF—Immunofluorescence F—Flow cytometry E-P—ELISA-Peptide
Species Cross-Reactivity Key: H—human M—mouse R—rat Hm—hamster Mk—monkey Mi—mink C—chicken Dm—D. melanogaster X—Xenopus Z—zebrafish B—bovine
Dg—dog Pg—pig Sc—S. cerevisiae All—all species expected Species enclosed in parentheses are predicted to react based on 100% homology.