

#4716 Store at -20°C

RACK1 Antibody

✓ 100 µl
(10 western blots)

Orders ■ 877-616-CELL (2355)
orders@cellsignal.com
Support ■ 877-678-TECH (8324)
info@cellsignal.com
Web ■ www.cellsignal.com

rev. 07/26/10

This product is intended for research purposes only. This product is not intended to be used for therapeutic or diagnostic purposes in humans or animals.

Entrez-Gene ID #10399
Swiss-Prot Acc. #P63244

Applications	Species Cross-Reactivity*	Molecular Wt.	Source
W Endogenous	H, M, R	32 kDa	Rabbit**

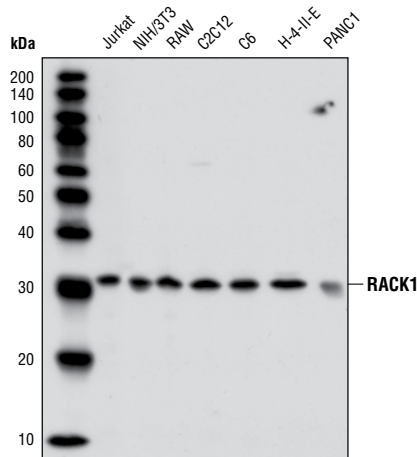
Background: The highly conserved receptor for activated C kinase 1 (RACK1), homologous to the β-subunit of heterotrimeric G-proteins, was originally identified through its binding of active PKCβII and other classical PKC isoforms (1). RACK1 is a scaffold protein that recruits PKC and a wide range of other proteins to specific subcellular locations, promoting the formation of multiprotein complexes to induce and integrate various signaling pathways (reviewed in 2). One example of this is its enhancement of PKC-dependent JNK activation (3). RACK1 protein also resides in the eukaryotic ribosome, suggesting the possibility that RACK1 participates in the assembly of signaling complexes that regulate translation as well (reviewed in 4). RACK1 binds the SH2 domain of Src, and phosphorylation of RACK1 by Src occurs at tyrosine 228 after PKC activation (5).

Specificity/Sensitivity: RACK1 Antibody recognizes endogenous levels of total RACK1 protein.

Source/Purification: Polyclonal antibodies are produced by immunizing animals with a synthetic peptide corresponding to human RACK1. Antibodies are purified by protein A and peptide affinity chromatography.

Background References:

- (1) Ron, D. et al. (1994) *Proc. Natl. Acad. Sci. USA* 91, 839–843.
- (2) Lopez-Bergami, P. et al. (2005) *Mol. Cell* 19, 309–320.
- (3) McCahill, A. et al. (2002) *Mol. Pharmacol.* 62, 1261–1273.
- (4) Nilsson, J. et al. (2004) *EMBO Rep.* 5, 1137–1141.
- (5) Chang, B.Y. et al. (2002) *Oncogene* 21, 7619–7629.



Western blot analysis of extracts from various cell lines using RACK1 Antibody.

Storage: Supplied in 10 mM sodium HEPES (pH 7.5), 150 mM NaCl, 100 µg/ml BSA and 50% glycerol. Store at -20°C. Do not aliquot the antibody.

*Species cross-reactivity is determined by western blot.

**Anti-rabbit secondary antibodies must be used to detect this antibody.

Recommended Antibody Dilutions:

Western Blotting 1:1000

For application specific protocols please see the web page for this product at www.cellsignal.com.

Please visit www.cellsignal.com for a complete listing of recommended companion products.

IMPORTANT: For western blots, incubate membrane with diluted antibody in 5% w/v BSA, 1X TBS, 0.1% Tween-20 at 4°C with gentle shaking, overnight.

Applications Key: W—Western IP—Immunoprecipitation IHC—Immunohistochemistry ChIP—Chromatin Immunoprecipitation IF—Immunofluorescence F—Flow cytometry E-P—ELISA-Peptide
Species Cross-Reactivity Key: H—human M—mouse R—rat Hm—hamster Mk—monkey Mi—mink C—chicken Dm—D. melanogaster X—Xenopus Z—zebrafish B—bovine
 Dg—dog Pg—pig Sc—S. cerevisiae Ce—C. elegans Hr—horse All—all species expected Species enclosed in parentheses are predicted to react based on 100% homology.