

SSEA1 (MC480) Mouse mAb

✓ 100 µl
(100 Tests)

Orders ■ 877-616-CELL (2355)
orders@cellsignal.com

Support ■ 877-678-TECH (8324)
info@cellsignal.com

Web ■ www.cellsignal.com

New 09/08

This product is for *in vitro* research use only and is not intended for use in humans or animals.
This product is not intended for use as a therapeutic or in diagnostic procedures.

Applications	Species Cross-Reactivity	Isotype
IHC-P, IF-IC, F Endogenous	M	Mouse IgM**

Background: SSEA-1 antibody detects a lactoseries oligosaccharide antigen that is expressed on the surface of mouse embryonal carcinoma and embryonic stem cells (1). This antigen is also found on early mouse embryos and both mouse and human germ cells, but is absent on human embryonic stem cells and human embryonic carcinoma cells. Expression of SSEA1 in these human cell types increases upon differentiation, while on the mouse cell types differentiation leads to decreased expression (2).

Specificity/Sensitivity: SSEA1 Antibody detects endogenous levels of SSEA1 antigen.

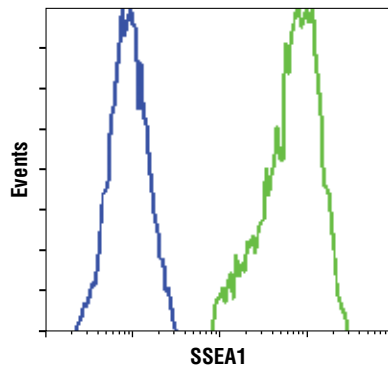
Source/Purification: Monoclonal antibody is produced by immunizing animals with F9 teratoma cells (X-irradiated).

Selected Application References:

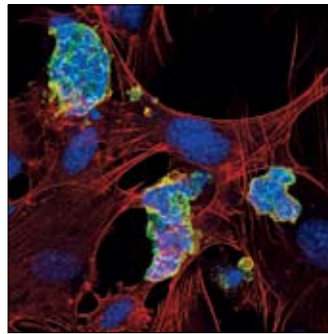
Damjanov, I. et al. (1982) Immunohistochemical localization of murine stage-specific embryonic antigens in human testicular germ cell tumors. *Am J Pathol* 108, 225-30. Application: IHC-P (paraffin).

Background References:

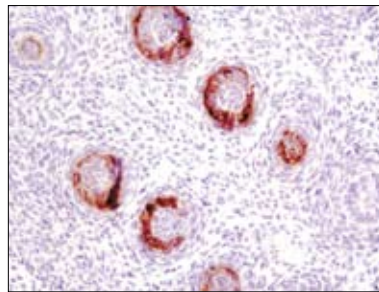
- (1) Solter, D. and Knowles, B.B. (1978) *Proc Natl Acad Sci USA* 75, 5565-9.
- (2) Fenderson, B.A. et al. (1987) *Dev Biol* 122, 21-34.



Flow cytometric analysis of unpermeabilized NIH/3T3 cells (blue) and unpermeabilized F9 cells (green) using SSEA1 (MC480) Mouse mAb.



Confocal immunofluorescent analysis of mouse embryonic stem cells growing on mouse embryonic fibroblast (MEF) feeder cells using SSEA1 (MC480) Mouse mAb (green). Actin filaments have been labeled with DY-554 phalloidin (red). Blue pseudocolor = DRAQ5™ (fluorescent DNA dye).



IHC analysis of paraffin-embedded mouse embryo, showing staining of hair follicles, using SSEA1 (MC480) Mouse mAb.

Storage: Supplied in 10 mM sodium HEPES (pH 7.5), 150 mM NaCl, 100 µg/ml BSA, 50% glycerol and less than 0.02% sodium azide. Store at -20°C. Do not aliquot the antibody.

****Anti-mouse secondary antibodies must be used to detect this antibody.**

Recommended Antibody Dilutions:

Immunofluorescence (IF-IC)* 1:100
Flow Cytometry* 1:200

*Note: Due to the extracellular location of the epitope, permeabilization (detergents or alcohols) should be omitted.

Immunohistochemistry (Paraffin) 1:100
IHC protocol: Unmasking buffer/Antibody diluent
Citrate/ SignalStain® Antibody Diluent #8112

For application specific protocols please see the web page for this product at www.cellsignal.com.

Companion Products:

TRA-1-81 (TRA-1-81) Mouse mAb #4745

TRA-1-60 (TRA-1-60) Mouse mAb #4746

SSEA4 (MC813) Mouse mAb #4755

Oct-4 (C30A3) Rabbit mAb #2840

Sox2 Antibody #2748

SignalStain® Antibody Diluent #8112

Please visit www.cellsignal.com for a complete listing of recommended companion products.