

SSEA4 (MC813) Mouse mAb

 100 microliters

Orders ■ 877-616-CELL (2355)
orders@cellsignal.com

Support ■ 877-678-TECH (8324)
info@cellsignal.com

Web ■ www.cellsignal.com

New 10/08

This product is for *in vitro* research use only and is not intended for use in humans or animals.
This product is not intended for use as a therapeutic or in diagnostic procedures.

Applications	Species Cross-Reactivity	Isotype
IF-IC Endogenous	H	Mouse IgG3

Background: SSEA-4 (stage-specific embryonic antigen) is a glycolipid carbohydrate epitope expressed on the surface of human teratocarcinoma stem cells, human embryonic germ cells, and human embryonic stem cells (1). Expression of human SSEA-4 decreases following differentiation of human embryonal carcinoma cells. Expression of the SSEA4 antigen is absent in murine pluripotent cells, but increases following differentiation (1,2).

Specificity/Sensitivity: SSEA4 (MC813) Mouse mAb detects endogenous levels of SSEA4 antigen.

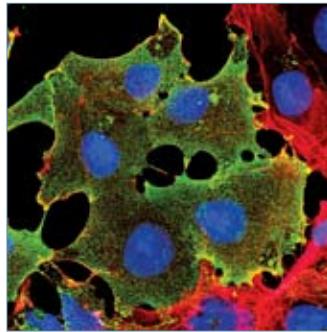
Source/Purification: Monoclonal antibody is produced by injecting animals with human embryonal carcinoma 2102Ep cl.2A6 cells.

Selected Application References:

Krupnick, J.G. et al. (1994) Globo-series carbohydrate antigens are expressed in different forms on human and murine teratocarcinoma-derived cells. *Int J Cancer* 59, 692–8.
Applications: Fluorescent Detection, IC-IF.

Background References:

- (1) Henderson, J.K. et al. (2002) *Stem Cells* 20, 329–37.
- (2) Draper, J.S. et al. (2002) *J Anat* 200, 249–58.



Confocal immunofluorescent analysis of NTERA2 cells using SSEA4 (MC813) Mouse mAb (green). Actin filaments have been labeled with DY-554 phalloidin (red). Blue pseudocolor = DRAQ5™ (fluorescent DNA dye).

Storage: Supplied in 10 mM sodium HEPES (pH 7.5), 150 mM NaCl, 100 µg/ml BSA, 50% glycerol and less than 0.02% sodium azide. Store at -20°C. Do not aliquot the antibody.

Recommended Antibody Dilutions:

Immunofluorescence (IF-IC) 1:1000

Note: Due to the extracellular location of the epitope, permeabilization (detergents or alcohols) should be omitted.

For application specific protocols please see the web page for this product at www.cellsignal.com.

Companion Products:

Oct-4 (C30A3) Rabbit mAb #2840

Sox2 Antibody #2748

TRA-1-81 (TRA-1-81) Mouse mAb #4745

SSEA1 (MC480) Mouse mAb #4744

TRA-1-60 (TRA-1-60) Mouse mAb #4746

Please visit www.cellsignal.com for a complete listing of recommended companion products.