

hnRNP LL Antibody

100 µl
(10 western blots)

Orders ■ 877-616-CELL (2355)
orders@cellsignal.com

Support ■ 877-678-TECH (8324)
info@cellsignal.com

Web ■ www.cellsignal.com

rev. 03/19/10

This product is intended for research purposes only. This product is not intended to be used for therapeutic or diagnostic purposes in humans or animals.

Applications	Species Cross-Reactivity*	Molecular Wt.	Source
W, IP Endogenous	H, M, R	61 kDa	Rabbit**

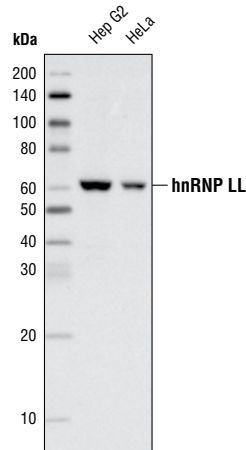
Background: Heterogeneous nuclear ribonucleoprotein L-like (hnRNP LL) is a nuclear RNA-binding protein that shares 69% amino acid homology with hnRNP L, a component of hnRNP complex which regulates mRNA formation, packaging, and processing (1). hnRNP LL is induced in activated T-cells and functions as a critical regulator of alternative splicing of CD45, a tyrosine phosphatase crucial for T-cell development and activation (2). hnRNP LL also regulates the splicing of CD44 and Stat5a (2). Four isoforms of hnRNP LL, generated by alternative splicing, are widely expressed in human tissues (3).

Specificity/Sensitivity: hnRNP LL Antibody detects endogenous levels of total hnRNP LL protein.

Source/Purification: Polyclonal antibodies are produced by immunizing animals with a synthetic peptide corresponding to residues near the amino terminus of human hnRNP LL protein. Antibodies are purified by protein A and peptide affinity chromatography.

Background References:

- (1) Pinol-Roma, S. et al. (1989) *J Cell Biol* 109, 2575-87.
- (2) Oberdoerffer, S. et al. (2008) *Science* 321, 686-91.
- (3) Shur, I. et al. (2004) *Gene* 334, 113-21.



Western blot analysis of extracts from Hep G2 and HeLa cells using hnRNP LL Antibody.

Entrez-Gene ID #92906
Swiss-Prot Acc. #Q8WVV9

Storage: Supplied in 10 mM HEPES (pH 7.5), 150 mM NaCl, 100 µg/ml BSA and 50% glycerol. Store at -20°C. Do not aliquot the antibody.

*Species cross-reactivity is determined by western blot.

**Anti-rabbit secondary antibodies must be used to detect this antibody.

Recommended Antibody Dilutions:

Western blotting	1:1000
Immunoprecipitation	1:50

For application specific protocols please see the web page for this product at www.cellsignal.com.

Please visit www.cellsignal.com for a complete listing of recommended companion products.

IMPORTANT: For western blots, incubate membrane with diluted antibody in 5% w/v BSA, 1X TBS, 0.1% Tween-20 at 4°C with gentle shaking, overnight.

Applications Key: W—Western IP—Immunoprecipitation IHC—Immunohistochemistry ChIP—Chromatin Immunoprecipitation IF—Immunofluorescence F—Flow cytometry E-P—ELISA-Peptide
Species Cross-Reactivity Key: H—human M—mouse R—rat Hm—hamster Mk—monkey Mi—mink C—chicken Dm—D. melanogaster X—Xenopus Z—zebrafish B—bovine
 Dg—dog Pg—pig Sc—S. cerevisiae Ce—C. elegans Hr—horse All—all species expected Species enclosed in parentheses are predicted to react based on 100% homology.