

This product is intended for research purposes only. This product is not intended to be used for therapeutic or diagnostic purposes in humans or animals.

Applications	Species Cross-Reactivity*	Molecular Wt.	Source
W Endogenous	H, R, M, Mk	24 kDa	Rabbit**

Background: Rab6 is a member of the Ras superfamily of small Rab GTPases implicated in endocytosis (1). The three distinct members of the Rab6 subfamily (Rab6A, Rab6A' and Rab6B) are structurally similar but likely exhibit non-overlapping functions (2,3). Rab6 is localized to the Golgi (4) and regulates retrograde transport of membrane-bound target proteins from the Golgi apparatus to the endoplasmic reticulum (5-7) or from the Golgi to the endosome during exocytotic transport (8). Rab6 interacts with microtubule motor proteins such as rabkinesin-6 (KIF20A) and dynein/dynactin complexes; Rab6 related transport requires a functionally intact microtubule system (9,10). Rab6 proteins help regulate cytokinesis and cell cycle check point through interactions with Rab6 effector proteins, including the dynein/dynactin protein DCTN1 and the GTPase activating protein RABGAP1 (11,12).

Specificity/Sensitivity: Rab6 Antibody detects endogenous levels of total Rab6 protein.

Source/Purification: Polyclonal antibodies are produced by immunizing animals with a synthetic peptide corresponding to residues surrounding Lys133 of human Rab6 protein. Antibodies are purified by peptide affinity chromatography.

Background References:

- Zerial, M. and McBride, H. (2001) *Nat Rev Mol Cell Biol* 2, 107-17.
- Echard, A. et al. (2000) *Mol Biol Cell* 11, 3819-33.
- Del Nery, E. et al. (2006) *Traffic* 7, 394-407.
- Goud, B. et al. (1994) *Ann N Y Acad Sci* 733, 340-3.
- White, J. et al. (1999) *J Cell Biol* 147, 743-60.
- Opdam, F.J. et al. (2000) *J Cell Sci* 113 (Pt 15), 2725-35.
- Martinez, O. et al. (1997) *Proc Natl Acad Sci USA* 94, 1828-33.
- Grigoriev, I. et al. (2007) *Dev Cell* 13, 305-14.
- Echard, A. et al. (1998) *Science* 279, 580-5.
- Young, J. et al. (2005) *Mol Biol Cell* 16, 162-77.
- Hill, E. et al. (2000) *EMBO J* 19, 5711-9.
- Miserey-Lenkei, S. et al. (2006) *EMBO J* 25, 278-89.

Entrez-Gene ID #5870
Swiss-Prot Acc. #P20340

Storage: Supplied in 10 mM sodium HEPES (pH 7.5), 150 mM NaCl, 100 µg/ml BSA and 50% glycerol. Store at -20°C. Do not aliquot the antibody.

*Species cross-reactivity is determined by western blot.

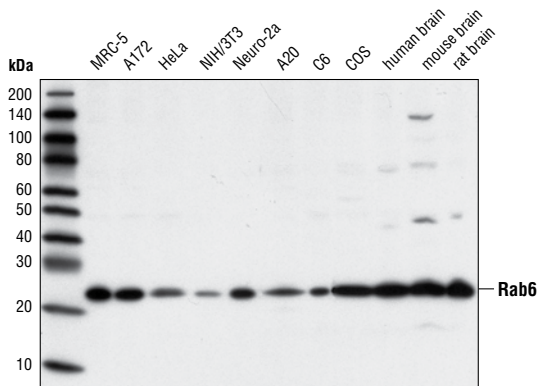
**Anti-rabbit secondary antibodies must be used to detect this antibody.

Recommended Antibody Dilutions:

Western blotting 1:1000

For application specific protocols please see the web page for this product at www.cellsignal.com.

Please visit www.cellsignal.com for a complete listing of recommended companion products.



Western blot analysis of extracts from various cell lines and tissues using Rab6 Antibody.

IMPORTANT: For western blots, incubate membrane with diluted antibody in 5% w/v BSA, 1X TBS, 0.1% Tween-20 at 4°C with gentle shaking, overnight.