

#4897 Store at -20°C

Ajuba Antibody



✓ 100 µl
(10 western blots)

Orders ■ 877-616-CELL (2355)
orders@cellsignal.com
Support ■ 877-678-TECH (8324)
info@cellsignal.com
Web ■ www.cellsignal.com

rev. 07/22/10

This product is intended for research purposes only. This product is not intended to be used for therapeutic or diagnostic purposes in humans or animals.

Entrez-Gene ID #84962
Swiss-Prot Acc. #Q961F1

Applications	Species Cross-Reactivity*	Molecular Wt.	Source
W, IP, F Endogenous	H, M, Mk, B, (R)	55 kDa	Rabbit**

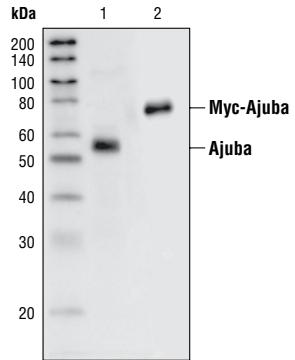
Background: Ajuba belongs to the Zyxin/Ajuba family, members of which include LIMD1, LPP, Trip6 and Zyxin. Three LIM domains at the carboxy terminus characterize this family of proteins. Zyxin/Ajuba family members associate with the actin cytoskeleton, are components of both cell-cell junction adhesive complex and integrin-mediated adhesive complex, and shuttle in and out of the nucleus (1). Ajuba is involved in Rac activation during cell migration and activates Aurora A in order to commit to mitosis (2-3). Ajuba and its family members also have an amino-terminal proline-rich pre-LIM region, and Ajuba augments ERK activation in a Ras-dependent manner (4).

Specificity/Sensitivity: Ajuba Antibody detects endogenous levels of total Ajuba protein.

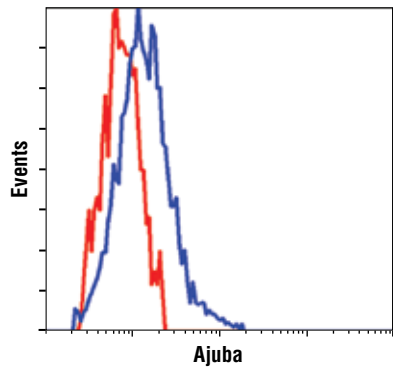
Source/Purification: Polyclonal antibodies are produced by immunizing animals with a synthetic peptide corresponding to the sequence of human Ajuba. Antibodies are purified by protein A and peptide affinity chromatography.

Background References:

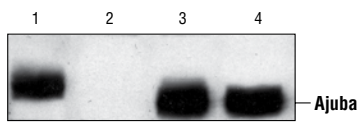
- (1) Feng, Y. and Longmore, G.D. (2005) *Mol. Cell Biol.* 25, 4010-4022.
- (2) Pratt, S.J. et al. (2005) *J. Cell Biol.* 168, 813-824.
- (3) Hirota, T. et al. (2003) *Cell* 114, 585-598.
- (4) Goyal, R. et al. (1999) *Mol. Cell Biol.* 19, 4379-4389.



Western blot analysis of extracts from P19 cells (lane 1) and COS-7 cells transfected with Ajuba (lane 2) using Ajuba Antibody.



Flow cytometric analysis of COS cells using Ajuba antibody (blue) compared to a non-specific negative control antibody (red).



Western blot analysis of extracts from MEF-/- cells rescued with a construct overexpressing Ajuba (lane 1), MEF-/- cells (lane 2), MEF+/+ cells (lane 3) and P19 cells (lane 4), using Ajuba Antibody. (Kindly provided by Dr. Gregory D. Longmore, Washington University, St. Louis, Missouri.)

IMPORTANT: For western blots, incubate membrane with diluted antibody in 5% w/v BSA, 1X TBS, 0.1% Tween-20 at 4°C with gentle shaking, overnight.

Storage: Supplied in 10 mM sodium HEPES (pH 7.5), 150 mM NaCl, 100 µg/ml BSA and 50% glycerol. Store at -20°C. Do not aliquot the antibody.

*Species cross-reactivity is determined by western blot.

**Anti-rabbit secondary antibodies must be used to detect this antibody.

Recommended Antibody Dilutions:

Western Blotting	1:1000
Immunoprecipitation	1:50
Flow Cytometry	1:100

For application specific protocols please see the web page for this product at www.cellsignal.com.

Please visit www.cellsignal.com for a complete listing of recommended companion products.