

#5058 Store at -20°C

NPC1L1 Antibody



100 µl
(10 western blots)

Orders ■ 877-616-CELL (2355)
orders@cellsignal.com
Support ■ 877-678-TECH (8324)
info@cellsignal.com
Web ■ www.cellsignal.com

rev. 08/20/10

This product is intended for research purposes only. This product is not intended to be used for therapeutic or diagnostic purposes in humans or animals.

Entrez-Gene ID #29881
Swiss-Prot Acc. #Q9UHC9

Applications	Species Cross-Reactivity*	Molecular Wt.	Source
W, IP Endogenous	H	140 kDa	Rabbit**

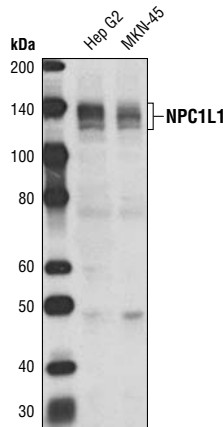
Background: Niemann-Pick C1-like 1 (NPC1L1) is a transmembrane protein that plays a critical role in cholesterol absorption (1). It is highly expressed in small intestine and localized along the brush border in both human and mouse epithelial cells (2,3). NPC1L1 mediates cholesterol uptake via vesicular endocytosis (4). Ezetimibe, a potent cholesterol absorption inhibitor used to treat hypercholesterolemia (5), inhibits cholesterol uptake by preventing NPC1L1 from incorporating into clathrin-coated vesicles (4).

Specificity/Sensitivity: NPC1L1 Antibody detects endogenous levels of total NPC1L1 protein.

Source/Purification: Polyclonal antibodies are produced by immunizing animals with a synthetic peptide corresponding to central residues of human NPC1L1 protein. Antibodies were purified by protein A and peptide affinity chromatography.

Background References:

- (1) Altmann, S.W. et al. (2004) *Science* 303, 1201-4.
- (2) Davis, H.R. et al. (2004) *J Biol Chem* 279, 33586-92.
- (3) Sané, A.T. et al. (2006) *J Lipid Res* 47, 2112-20.
- (4) Ge, L. et al. (2008) *Cell Metab* 7, 508-19.
- (5) Davis, H.R. and Veltri, E.P. (2007) *J Atheroscler Thromb* 14, 99-108.



Western blot analysis of extracts from Hep G2 and MKN-45 cells using NPC1L1 Antibody.

Storage: Supplied in 10 mM sodium HEPES (pH 7.5), 150 mM NaCl, 100 µg/ml BSA and 50% glycerol. Store at -20°C. Do not aliquot the antibody.

*Species cross-reactivity is determined by western blot.

**Anti-rabbit secondary antibodies must be used to detect this antibody.

Recommended Antibody Dilutions:

Western blotting	1:1000
Immunoprecipitation	1:50

For application specific protocols please see the web page for this product at www.cellsignal.com.

Please visit www.cellsignal.com for a complete listing of recommended companion products.

IMPORTANT: For western blots, incubate membrane with diluted antibody in 5% w/v BSA, 1X TBS, 0.1% Tween-20 at 4°C with gentle shaking, overnight.

Applications Key: W—Western IP—Immunoprecipitation IHC—Immunohistochemistry ChIP—Chromatin Immunoprecipitation IF—Immunofluorescence F—Flow cytometry E-P—ELISA-Peptide
Species Cross-Reactivity Key: H—human M—mouse R—rat Hm—hamster Mk—monkey Mi—mink C—chicken Dm—D. melanogaster X—Xenopus Z—zebrafish B—bovine
 Dg—dog Pg—pig Sc—S. cerevisiae Ce—C. elegans Hr—horse All—all species expected Species enclosed in parentheses are predicted to react based on 100% homology.