

#5286

Store at -20°C

Phospho-Bad (Ser136) (185D10) Rabbit mAb

✓ Small 200 µl (10 western blots)



Orders ■ 877-616-CELL (2355) orders@cellsignal.com
Support ■ 877-678-TECH (8324) info@cellsignal.com
Web ■ www.cellsignal.com

rev. 02/23/10

This product is intended for research purposes only. This product is not intended to be used for therapeutic or diagnostic purposes in humans or animals.

Applications	Species Cross-Reactivity*	Molecular Wt.	Isotype
W Transfected	M, Mk, (H, R)	23 kDa	Rabbit IgG**

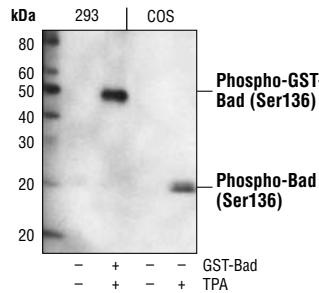
Background: Bad is a proapoptotic member of the Bcl-2 family that promotes cell death by displacing Bax from binding to Bcl-2 and Bcl-xL (1,2). Survival factors, such as IL-3, inhibit the apoptotic activity of Bad by activating intracellular signaling pathways that result in the phosphorylation of Bad at Ser112 and Ser136 (2). Phosphorylation at these sites promotes binding of Bad to 14-3-3 protein to prevent an association between Bad and Bcl-2 and Bcl-xL (2). Akt phosphorylates Bad at Ser136 to promote cell survival (3,4). Bad is phosphorylated at Ser112 both *in vivo* and *in vitro* by p90RSK (5,6) and mitochondria-anchored PKA (7). Phosphorylation of Ser155 in the BH3 domain by PKA plays a critical role in blocking the dimerization of Bad and Bcl-xL (8-10).

Specificity/Sensitivity: Phospho-Bad (Ser136) (185D10) Rabbit mAb detects transfected levels of Bad protein only when phosphorylated at Ser136.

Source/Purification: Monoclonal antibody is produced by immunizing animals with a synthetic phosphopeptide corresponding to residues surrounding Ser136 of mouse Bad.

Background References:

- (1) Yang, E. et al. (1995) *Cell* 80, 285-291.
- (2) Zha, J. et al. (1996) *Cell* 87, 619-628.
- (3) Datta, S.R. et al. (1997) *Cell* 91, 231-241.
- (4) Peso, L. et al. (1997) *Science* 278, 687-689.
- (5) Bonni, A. et al. (1999) *Science* 286, 1358-1362.
- (6) Tan, Y. et al. (1999) *J. Biol. Chem.* 274, 34859-34867.
- (7) Harada, H. et al. (1999) *Mol. Cell* 3, 413-422.
- (8) Tan, Y. et al. (2000) *J. Biol. Chem.* 275, 25865-25869.
- (9) Lizcano, J. et al. (2000) *Biochem. J.* 349, 547-557.
- (10) Datta, S. et al. (2000) *Mol. Cell* 6, 41-51.



Western blot analysis of extracts from control 293, GST-Bad transfected 293 and COS cells, untreated or TPA-treated, using Phospho-Bad (Ser136) (185D10) Rabbit mAb.

Entrez-Gene ID #572
Swiss-Prot Acc. #Q92934

Storage: Supplied in 10 mM sodium HEPES (pH 7.5), 150 mM NaCl, 100 µg/ml BSA, 50% glycerol and less than 0.02% sodium azide. Store at -20°C. Do not aliquot the antibody.

*Species cross-reactivity is determined by western blot.

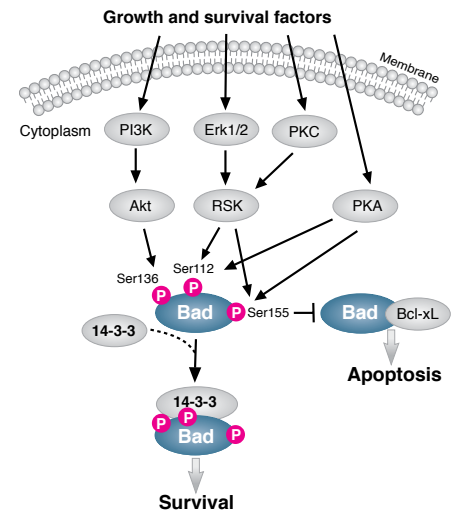
**Anti-rabbit secondary antibodies must be used to detect this antibody.

Recommended Antibody Dilutions:

Western blotting 1:500

For application specific protocols please see the web page for this product at www.cellsignal.com.

Please visit www.cellsignal.com for a complete listing of recommended companion products.



IMPORTANT: For western blots, incubate membrane with diluted antibody in 5% w/v BSA, 1X TBS, 0.1% Tween-20 at 4°C with gentle shaking, overnight.

Applications Key: W—Western IP—Immunoprecipitation IHC—Immunohistochemistry ChIP—Chromatin Immunoprecipitation IF—Immunofluorescence F—Flow cytometry E-P—ELISA-Peptide
Species Cross-Reactivity Key: H—human M—mouse R—rat Hm—hamster Mk—monkey Mi—mink C—chicken Dm—D. melanogaster X—Xenopus Z—zebrafish B—bovine
Dg—dog Pg—pig Sc—S. cerevisiae Ce—C. elegans Hr—Horse All—all species expected Species enclosed in parentheses are predicted to react based on 100% homology.

© 2010 Cell Signaling Technology, Inc. Rabbit monoclonal antibody is produced under license (granting certain rights including those under U. S. Patents No. 5,675,063 and 7,429,487) from Epitomics, Inc.