

PathScan® Multiplex Western Cocktail III:

Phospho-Stat1, Phospho-SAPK/JNK, Phospho-S6 Ribosomal Protein and Phospho-HSP27 Detection Kit

- ✓ 1 Kit (5 Western mini-blots)

rev. 08/06/04



Cell Signaling
TECHNOLOGY®

Orders ■ 877-616-CELL (2355)
orders@cellsignal.com

Support ■ 877-678-TECH (8324)
info@cellsignal.com

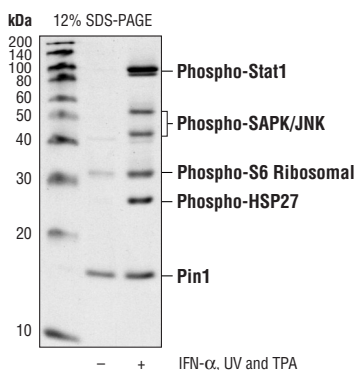
Web ■ www.cellsignal.com

Products Included	Product #	Kit Quantity
Multiplex Western Cocktail III		250 µl
Treated and Untreated Control Cell Extracts		50 µl each
Phototope®-HRP Western Detection System:		
Anti-rabbit IgG, HRP-linked Antibody	7074	25 µl
Anti-biotin, HRP-linked Antibody	7075	50 µl
20X LumiGLO® Reagent and Peroxide	7003	2.5 ml each
Biotinylated Protein Ladder Detection Pack	7727	50 µl

Description: The PathScan® Multiplex Western Cocktail III Detection Kit offers a unique method to assay the activation of multiple pathways on one membrane without stripping and reprobing. This method saves the user valuable time, while increasing accuracy and minimizing reagent waste. The system allows the user to simultaneously detect levels of phospho-Stat1, phospho-SAPK/JNK, phospho-S6 ribosomal protein and phospho-HSP27. The kit also includes Pin1 antibody to control protein loading. In addition, each PathScan® Multiplex Western Cocktail Detection Kit contains treated and untreated cell lysates and the Phototope®-HRP Western Detection System. The kit includes enough primary and secondary antibodies to perform five Western mini-blot experiments.

Specificity/Sensitivity: Each phospho-antibody in this kit recognizes only the phosphorylated form of its specific target. The Pin1 antibody detects total levels of target protein to control for protein loading. All the antibodies in this kit detect endogenous levels of target proteins.

Source/Purification: Polyclonal antibodies are produced by immunizing rabbits with synthetic peptides. Antibodies are purified by protein A and peptide affinity chromatography.



Western blot analysis of extracts from untreated or IFN- α , UV and TPA treated HeLa cells, using PathScan® Multiplex Western Cocktail III to detect the phosphorylation of Stat1, SAPK/JNK, S6 ribosomal protein and HSP27.

Species Cross-Reactivity and Molecular Weight			
No.	Antibody	Species Cross-Reactivity	M.W. (kDa)
9171	Phospho-Stat1 (Tyr701) Antibody	H, M, R	84, 91
9251	Phospho-SAPK/JNK (Thr183/Tyr185) Antibody	H, M, R, (X)	46, 54
2211	Phospho-S6 Ribosomal Protein (Ser235/236) Antibody	H, M, R, (C, X)	32
2401	Phospho-HSP27 (Ser82) Antibody	H, Mk	27
3722	Pin 1 Antibody	H, M, R, Mk, (X)	18

IMPORTANT: For Western blots, incubate membrane with diluted antibody in 5% BSA, 1X TBS, 0.1% Tween-20 at 4°C with gentle shaking, overnight.

Storage: Supplied in 10 mM sodium HEPES (pH 7.5), 150 mM NaCl, 100 µg/ml BSA and 50% glycerol. Store at -20°C. Do not aliquot the antibody.

Recommended Antibody Dilutions:
Western blotting 1:200

Companion Products:
Phospho-S6 Ribosomal Protein (Ser235/236) Antibody #2211

Phospho-HSP27 (Ser82) Antibody #2401

Phospho-Stat1 (Tyr701) Antibody #9171

Phospho-SAPK/JNK (Thr183/Tyr185) Antibody #9251

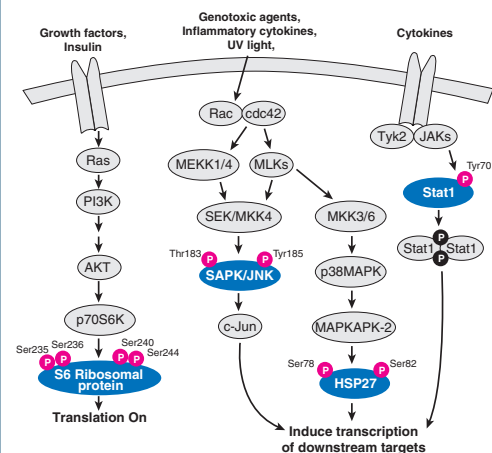
Phototope-HRP Western Blot Detection System, Anti-rabbit IgG, HRP-linked Antibody #7071

Anti-rabbit IgG, HRP-linked Antibody #7074

Prestained Protein Marker, Broad Range (Premixed Format) #7720

Biotinylated Protein Ladder Detection Pack #7727

LumiGLO® Reagent and Peroxide #7003



Background: Stat1, while activated in response to a large number of ligands, appears to be essential for responsiveness to IFN- α and IFN- γ (1-3). Phosphorylation of Stat1 at tyrosine 701 induces Stat1 dimerization, nuclear translocation and DNA binding (4). Stat1 has been found to be inappropriately activated in many tumors (5).

The stress-activated protein kinase/Jun-terminal kinase SAPK/JNK is potently and preferentially activated by a variety of environmental stresses, including UV and gamma radiation, ceramides, inflammatory cytokines and, in some instances, by growth factors and GPCR agonists (6,7). SAPK/JNK, when active as a dimer, can translocate to the nucleus where it regulates transcription through its effects on c-Jun, ATF-2 and other transcription factors (8).

To effectively promote growth and cell division in a sustained manner, growth factors and mitogens must upregulate translation (9,10). Growth factors and mitogens induce the activation of p70 S6 kinase, which in turn phosphorylate the S6 ribosomal protein. Phosphorylation of S6 correlates with an increase in translation, particularly of mRNAs with an oligopyrimidine tract in their 5' untranslated regions (10). This group of mRNAs (5'TOP) encodes proteins involved in cell cycle progression and proteins that are part of the translational machinery, such as ribosomal proteins and elongation factors (10,11).

Heat shock protein (HSP) 27 is one of the small HSPs that are regulated at both the transcriptional and post-translational levels (12). In response to stress, the expression level of HSP27 increases several-fold in order to confer cellular resistance to the adverse environmental change. HSP27 is also phosphorylated at serines 15, 78 and 82 by MAPKAP kinase 2 as the result of the activation of the p38 MAP kinase pathway (13,14).

Background References:

- (1) Heim, M.H. (1999) *J. Recept. Signal. Transduct. Res.* 19, 75–120.
- (2) Durbin, J.E. et al. (1996) *Cell* 84, 443–450.
- (3) Meraz, M.A. et al. (1996) *Cell* 84, 431–442.
- (4) Ihle, J.N. et al. (1994) *Trends Biochem. Sci.* 19, 222–227.
- (5) Frank, D.A. (1999) *Mol. Med.* 5, 432–456.
- (6) Davis, R.J. (1999) *Biochem. Soc. Symp.* 64, 1–12.
- (7) Kyriakis, J.M. and Avruch, J. (2001) *Physiol. Rev.* 81, 807–869.
- (8) Whitmarsh, A.J. and Davis, R.J. (1998) *Trends Biochem. Sci.* 23, 481–485.
- (9) Dufner, A. and Thomas, G. (1999) *Exp. Cell. Res.* 253, 100–109.
- (10) Peterson, R.T. and Schreiber, S.L. (1998) *Curr. Biol.* 8, R248–R250.
- (11) Jefferies, H.B. et al. (1997) *EMBO J.* 16, 3693–3704.
- (12) Arrigo, A.P. and Landry, J. (1994) *The Biology of Heat Shock Proteins and Molecular Chaperones*. Cold Spring Harbor Press, NY, 335–373.
- (13) Landry, J. et al. (1992) *J. Biol. Chem.* 267, 794–803.
- (14) Rouse, J. et al. (1994) *Cell* 78, 1027–1037.

Western Immunoblotting Protocol

For Western blots, incubate membrane with diluted anti-body in 5% BSA, 1X TBS, 0.1% Tween-20 at 4°C with gentle shaking, overnight.

A. Solutions and Reagents

Note: Prepare solutions with Milli-Q or equivalently purified water.

- A1. ■ 1X Phosphate Buffered Saline (PBS)
- A2. ■ 1X SDS Sample Buffer:
62.5 mM Tris-HCl (pH 6.8 at 25°C), 2% w/v SDS, 10% glycerol, 50 mM DTT, 0.01% w/v bromophenol blue or phenol red
- A3. ■ Transfer Buffer:
25 mM Tris base, 0.2 M glycine, 20% methanol (pH 8.5)
- A4. ■ 10X Tris Buffered Saline (TBS):
To prepare 1 liter of 10X TBS: 24.2 g Tris base, 80 g NaCl; adjust pH to 7.6 with HCl (use at 1X).
- A5. ■ Nonfat Dry Milk (weight to volume [w/v])
- A6. ■ Blocking Buffer:
1X TBS, 0.1% Tween-20 with 5% w/v nonfat dry milk; for 150 ml, add 15 ml 10X TBS to 135 ml water, mix. Add 7.5 g nonfat dry milk and mix well. While stirring, add 0.15 ml Tween-20 (100%).
- A7. ■ Wash Buffer:
1X TBS, 0.1% Tween-20 (TBS/T)
- A8. ■ Bovine Serum Albumin (BSA)
- A9. ■ Primary Antibody Dilution Buffer:
1X TBS, 0.1% Tween-20 with 5% BSA; for 20 ml, add 2 ml 10X TBS to 18 ml water, mix. Add 1.0 g BSA and mix well. While stirring, add 20 µl Tween-20 (100%).
- A10. ■ Phototope[®]-HRP Western Blot Detection System #7071:
Includes biotinylated protein ladder, secondary anti-rabbit (#7074) antibody conjugated to horseradish peroxidase (HRP), anti-biotin antibody conjugated to HRP, LumiGLO[®] chemiluminescent reagent and peroxide.
- A11. ■ Prestained Protein Marker, Broad Range (Premixed Format) #7720
- A12. ■ Biotinylated Protein Ladder Detection Pack #7727
- A13. ■ Blotting Membrane:
This protocol has been optimized for nitrocellulose membranes, which CST recommends. PVDF membranes may also be used.

B. Protein Blotting

A general protocol for sample preparation is described below.

- B1. Treat cells by adding fresh media containing regulator for desired time.
- B2. Aspirate media from cultures; wash cells with 1X PBS; aspirate.
- B3. Lyse cells by adding 1X SDS sample buffer (100 µl per well of 6-well plate or 500 µl per plate of 10 cm plate). Immediately scrape the cells off the plate and transfer the extract to a microcentrifuge tube. Keep on ice.
- B4. Sonicate for 10–15 seconds to shear DNA and reduce sample viscosity.
- B5. Heat a 20 µl sample to 95–100°C for 5 minutes; cool on ice.
- B6. Microcentrifuge for 5 minutes.
- B7. Load 20 µl onto SDS-PAGE gel (10 cm x 10 cm).

Note: CST recommends loading prestained molecular weight markers (#7720, 10 µl/lane) to verify electrotransfer and biotinylated protein ladder (#7727, 10 µl/lane) to determine molecular weights.

- B8. Electrotransfer to nitrocellulose or PVDF membrane.

C. Membrane Blocking and Antibody Incubations

Note: Volumes are for 10 cm x 10 cm (100 cm²) of membrane; for different sized membranes, adjust volumes accordingly.

- C1. (Optional) After transfer, wash nitrocellulose membrane with 25 ml TBS for 5 minutes at room temperature.
- C2. Incubate membrane in 25 ml of blocking buffer for 1 hour at room temperature.
- C3. Wash three times for 5 minutes each with 15 ml of TBS/T.
- C4. Incubate membrane and primary antibody (at the appropriate dilution) in 10 ml primary antibody dilution buffer with gentle agitation overnight at 4°C.
- C5. Wash three times for 5 minutes each with 15 ml of TBS/T.
- C6. Incubate membrane with HRP-conjugated secondary antibody (1:2000) and HRP-conjugated anti-biotin antibody (1:1000) to detect biotinylated protein markers in 10 ml of blocking buffer with gentle agitation for 1 hour at room temperature.
- C7. Wash three times for 5 minutes each with 15 ml of TBS/T.

D. Detection of Proteins

- D1. Incubate membrane with 10 ml LumiGLO[®] (0.5 ml 20X LumiGLO[®], 0.5 ml 20X Peroxide and 9.0 ml Milli-Q water) with gentle agitation for 1 minute at room temperature.

Note: LumiGLO[®] substrate can be further diluted if signal response is too fast.

- D2. Drain membrane of excess developing solution (do not let dry), wrap in plastic wrap and expose to x-ray film. An initial 10-second exposure should indicate the proper exposure time.

Note: Due to the kinetics of the detection reaction, signal is most intense immediately following LumiGLO[®] incubation and declines over the following 2 hours.