

#7720 Store at -20°C

Prestained Protein Marker, Broad Range



Cell Signaling
TECHNOLOGY®

Premixed Format

- Small 1050 µl (70 mini-gel lanes)
- Large 5 x 1050 µl (350 mini-gel lanes)

rev. 05/25/06

Orders ■ 877-616-CELL (2355)
orders@cellsignal.com

Support ■ 877-678-TECH (8324)
info@cellsignal.com

Web ■ www.cellsignal.com

This product is for *in vitro* research use only and is not intended for use in humans or animals.

Description: Prestained Protein Marker, Broad Range is a mixture of purified proteins covalently coupled to a blue dye that resolves to 8 bands between 6 and 175 kDa when resolved by electrophoresis (1). The protein concentrations are carefully balanced for even intensity. The covalent coupling of the dye to the proteins affects their electrophoretic behavior in SDS-PAGE gels relative to unstained proteins. The apparent molecular weights of the prestained proteins are given in the table below.

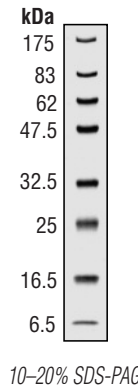
Contents: 0.05–0.1 mg/ml of each protein

References:

- (1) Laemmli, U.K. (1970) *Nature* 227, 680–685.
- (2) Sambrook, J.; Fritsch, E.F.; and Maniatis, T. (1989) *Molecular Cloning: A Laboratory Manual*, second edition, Cold Spring Harbor Laboratory.

Notes On Use⁽²⁾

- (a) Transfer the desired amount of the Prestained Protein Marker to a separate tube. For visualizing during electrophoresis: use 15 µl for mini-gels and 30 µl for full size gels.
- (b) Heat the Marker to 95–100°C for 3–5 minutes.
- (c) Microcentrifuge briefly and load directly on to a gel. To ensure uniform mobility, load an equal volume of 1X reducing SDS Loading Buffer into any unused wells.



Storage: Supplied in 70 mM Tris-HCl (pH 6.8 at 25°C), 33 mM NaCl, 1 mM Na₂EDTA, 2% (w/v) SDS, 40 mM dithiothreitol (DTT), 0.01% (w/v) phenol red and 10% glycerol. Store at -20°C.

Companion Products:
Biotinylated Protein Ladder Detection Pack #7727

Prestained Protein Marker, Broad Range		
PROTEIN	SOURCE	Apparent MW (kDa)
MBP-β-galactosidase ¹	<i>E. coli</i>	175,000
MBP-paramyosin ¹	<i>E. coli</i>	83,000
MBP-CBD	<i>E. coli</i>	62,000
Aldolase	rabbit muscle	47,500
Triosephosphate isomerase	<i>E. coli</i>	32,500
β-Lactoglobulin A	bovine milk	25,000
Lysozyme	chicken egg white	16,500
Aprotinin	bovine lung	6,500

¹ MBP = maltose-binding protein. MBP-β-galactosidase = fusion of MBP and β-galactosidase. MBP-paramyosin = fusion of MBP and paramyosin.