

# SignalStain® Antibody Diluent

Small 25 ml

Large 100 ml

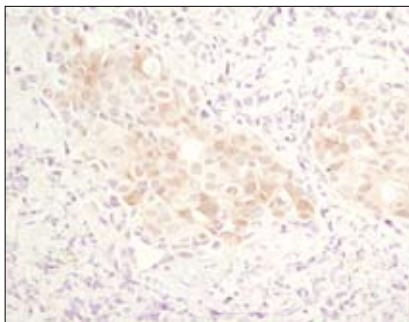
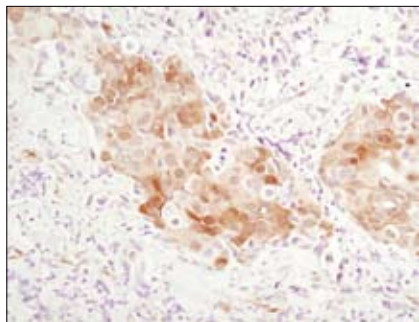
**Orders** ■ 877-616-CELL (2355)  
orders@cellsignal.com

**Support** ■ 877-678-TECH (8324)  
info@cellsignal.com

**Web** ■ www.cellsignal.com

New 03/08

This product is for *in vitro* research use only and is not intended for use in humans or animals.



Immunohistochemical analysis of paraffin-embedded human breast carcinoma comparing SignalStain® Antibody Diluent (left) to TBST/normal goat serum (right) using Phospho-Akt (Ser473) (D9E) Rabbit mAb #4060.

**Description:** SignalStain® Antibody Diluent is for use in immunohistochemical assays. It yields superior staining with a number of antibodies. This diluent can improve IHC signal and background; however, it is not compatible with all of Cell Signaling Technology's products that are recommended for use in immunohistochemical assays. Please consult the antibody datasheet to determine if SignalStain® Antibody Diluent is recommended for your product of interest.

**Directions for Use:** Use as a primary antibody diluent in immunohistochemical assays. Dilute primary antibody in SignalStain® Antibody Diluent as directed on the antibody datasheet.

**Storage:** Supplied as a working solution. Store at 4°C.

**Companion Products:**

- SignalStain® Akt Pathway IHC Sampler Kit #8107
- SignalStain® MAPK Family IHC Sampler Kit #8108
- SignalStain® Proliferation/Apoptosis IHC Sampler Kit #8109
- SignalStain® Phospho-Stat IHC Sampler Kit #8113
- SignalStain® Phospho-ErbB Family IHC Sampler Kit #8111
- Tris Buffered Saline with Tween 20 (TBST - 10X) #9997