

Phospho-Tyk2 (Tyr1054/1055) Antibody

✓ 100 µl
(10 western blots)

Orders ■ 877-616-CELL (2355)
orders@cellsignal.com
Support ■ 877-678-TECH (8324)
info@cellsignal.com
Web ■ www.cellsignal.com

rev. 07/16/10

This product is intended for research purposes only. This product is not intended to be used for therapeutic or diagnostic purposes in humans or animals.

Applications W Endogenous	Species Cross-Reactivity* H, (M, R)	Molecular Wt. 140 kDa	Source Rabbit**
---------------------------------	--	--------------------------	--------------------

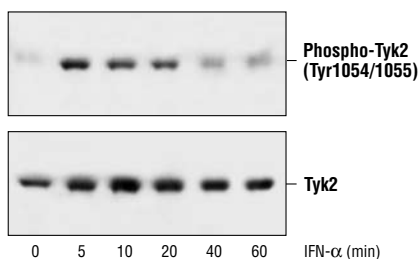
Background: Tyk2, a member of the Jak family of protein tyrosine kinases, associates with and is activated by receptors for many cytokines including IL-13, the IL-6 family, IL-10, and interferon- α and β (1-3). Following ligand binding, Tyk2 is activated by phosphorylation on Tyr1054 and/or Tyr1055 (4). Tyk2 is required for the tyrosine phosphorylation of Stat3 in the IFN- β signaling cascade (5).

Specificity/Sensitivity: Phospho-Tyk2 (Tyr1054/1055) Antibody detects endogenous levels of Tyk2 only when phosphorylated at tyrosine1054/1055. The antibody does not cross-react with Tyk2 phosphorylated at other sites.

Source/Purification: Polyclonal antibodies are produced by immunizing animals with a synthetic phospho-peptide (KLH-coupled) corresponding to residues surrounding Tyr1054/1055 of human Tyk2. Antibodies are purified by protein A and peptide affinity chromatography.

Background References:

- (1) Velazquez, L. et al. (1995) *J. Biol. Chem.* 270, 3327-3334.
- (2) Stahl, N. et al. (1994) *Science* 263, 92-95.
- (3) Leonard, W.J. (1998) *Annu. Rev. Immunol.* 16, 293-322.
- (4) Grauzzi, M.C. et al. (1996) *J. Biol. Chem.* 271, 20494-20500.
- (5) Rani, M.R. et al. (1999) *J. Biol. Chem.* 274, 32507-32511.



Western blot analysis of extracts from HeLa cells, untreated or interferon- α treated for the indicated times, using Phospho-Tyk2 (Tyr1054/1055) Antibody (upper) or Tyk2 antibody (lower).

Entrez-Gene ID #7297
Swiss-Prot Acc. #P29597

Storage: Supplied in 10 mM sodium HEPES (pH 7.5), 150 mM NaCl, 100 µg/ml BSA and 50% glycerol. Store at -20°C. Do not aliquot the antibody.

*Species cross-reactivity is determined by Western blot.

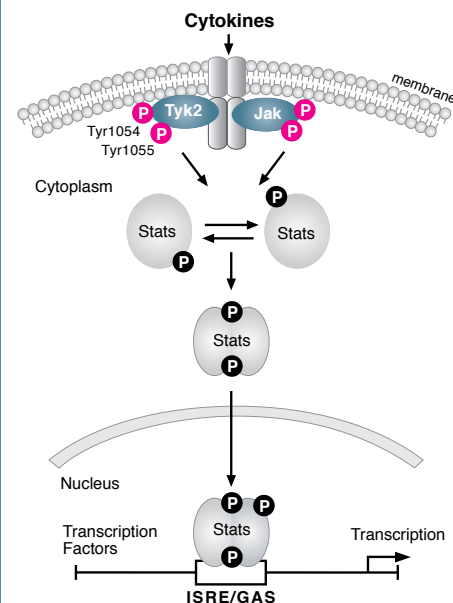
**Anti-rabbit secondary antibodies must be used to detect this antibody.

Recommended Antibody Dilutions:

Western blotting 1:1000

For application specific protocols please see the web page for this product at www.cellsignal.com.

Please visit www.cellsignal.com for a complete listing of recommended companion products.



IMPORTANT: For Western blots, incubate membrane with diluted antibody in 5% w/v BSA, 1X TBS, 0.1% Tween-20 at 4°C with gentle shaking, overnight.

Applications Key: W—Western IP—Immunoprecipitation IHC—Immunohistochemistry ChIP—Chromatin Immunoprecipitation IF—Immunofluorescence F—Flow cytometry E-P—ELISA-Peptide
Species Cross-Reactivity Key: H—human M—mouse R—rat Hm—hamster Mk—monkey Mi—mink C—chicken Dm—D. melanogaster X—Xenopus Z—zebra fish B—bovine
Dg—dog Pg—pig Sc—S. cerevisiae All—all species expected Species enclosed in parentheses are predicted to react based on 100% sequence homology.