

# Cleaved Caspase-8 (Asp387) Antibody (Mouse Specific)

✓ 100 µl  
(10 western blots)

**Orders** ■ 877-616-CELL (2355)  
orders@cellsignal.com

**Support** ■ 877-678-TECH (8324)  
info@cellsignal.com

**Web** ■ www.cellsignal.com

rev. 07/19/10

This product is intended for research purposes only. This product is not intended to be used for therapeutic or diagnostic purposes in humans or animals.

Applications W Endogenous	Species Cross-Reactivity* M, (R)	Molecular Wt. 18, 43 kDa	Source Rabbit**
---------------------------------	-------------------------------------	-----------------------------	--------------------

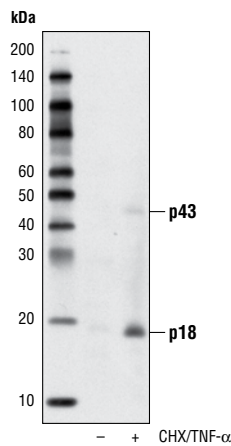
**Background:** Apoptosis induced through CD95 receptor (Fas/APO-1) and tumor necrosis factor receptor 1 (TNFR1) activates caspase-8 and leads to the release of the caspase-8 active fragments, p18 and p10 (1-3). Activated caspase-8 cleaves and activates downstream effector caspases such as caspase-1, -3, -6 and -7. Caspase-3 ultimately elicits the morphological hallmarks of apoptosis, including DNA fragmentation and cell shrinkage.

**Specificity/Sensitivity:** Cleaved Caspase-8 (Asp387) Antibody (Mouse Specific) detects endogenous levels of mouse and rat caspase-8 when cleaved at Asp387. This antibody will detect cleavage products containing the pro-domain with the p18 subunit (p43) as well as the p18 subunit alone.

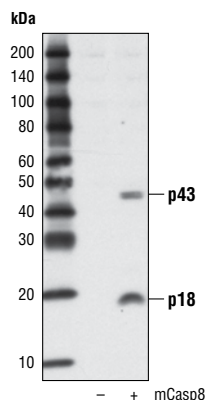
**Source/Purification:** Polyclonal antibodies are produced by immunizing animals with a synthetic peptide corresponding to residues adjacent to the Asp387 cleavage site of rodent caspase-8. Antibodies were purified by protein A and peptide affinity chromatography.

#### Background References:

- (1) Muzio, M. et al. (1996) *Cell* 85, 817-827.
- (2) Boldin, M.P. et al. (1996) *Cell* 85, 803-815.
- (3) Fernandes-Alnemri, T. et al. (1996) *Proc. Natl. Acad. Sci. USA* 93, 7464-7469.



Western blot analysis of extracts from CTLL-2 cells, untreated or treated with cycloheximide (10 µg/ml, overnight) followed by TNF-α #8902 (CHX, 20 ng/ml, 4 hours), using Cleaved Caspase-8 (Asp387) Antibody (Mouse Specific).



Western blot analysis of extracts from CTLL-2 cells, untreated or treated with cycloheximide (CHX, 10 µg/ml, overnight) followed by TNF-α #8902 (20 ng/ml, 4 hours), using Cleaved Caspase-8 (Asp387) Antibody (Mouse Specific).

**Storage:** Supplied in 10 mM sodium HEPES (pH 7.5), 150 mM NaCl, 100 µg/ml BSA and 50% glycerol. Store at -20°C. Do not aliquot the antibody.

\*Species cross-reactivity is determined by western blot.

\*\*Anti-rabbit secondary antibodies must be used to detect this antibody.

#### Recommended Antibody Dilutions:

Western blotting 1:1000

For application specific protocols please see the web page for this product at [www.cellsignal.com](http://www.cellsignal.com).

Please visit [www.cellsignal.com](http://www.cellsignal.com) for a complete listing of recommended companion products.

**IMPORTANT: For western blots, incubate membrane with diluted antibody in 5% w/v BSA, 1X TBS, 0.1% Tween-20 at 4°C with gentle shaking, overnight.**

**Applications Key:** W—Western IP—Immunoprecipitation IHC—Immunohistochemistry ChIP—Chromatin Immunoprecipitation IF—Immunofluorescence F—Flow cytometry E-P—ELISA—Peptide

**Species Cross-Reactivity Key:** H—human M—mouse R—rat Hm—hamster Mk—monkey Mi—mink C—chicken Dm—D. melanogaster X—Xenopus Z—zebrafish B—bovine

Dg—dog Pg—pig Sc—S. cerevisiae Ce—C. elegans Hr—horse All—all species expected Species enclosed in parentheses are predicted to react based on 100% homology.