

# 4E-BP1 Antibody

- Small 100 µl (10 western blots)
- Large 300 µl (30 western blots)

**Orders** ■ 877-616-CELL (2355)  
orders@cellsignal.com

**Support** ■ 877-678-TECH (8324)  
info@cellsignal.com

**Web** ■ www.cellsignal.com

rev. 03/23/10

This product is intended for research purposes only. This product is not intended to be used for therapeutic or diagnostic purposes in humans or animals.

Applications	Species Cross-Reactivity*	Molecular Wt.	Source
W, IP Endogenous	H, M, R, Mk,	15 to 20 kDa	Rabbit**

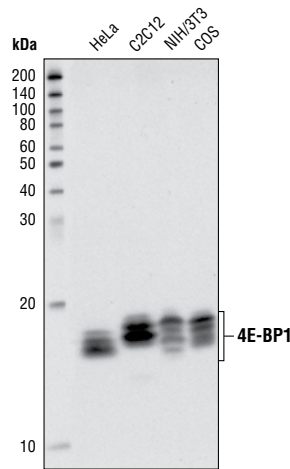
**Background:** Translation repressor protein 4E-BP1 (also known as PHAS-1) inhibits cap-dependent translation by binding to the eIF4E translation initiation factor. Hyperphosphorylation of 4E-BP1 disrupts this interaction and results in activation of cap-dependent translation (1). Both the PI3 kinase/Akt pathway and FRAP/mTOR kinase regulate 4E-BP1 activity (2,3). Multiple 4E-BP1 residues are phosphorylated *in vivo* (4). While phosphorylation by FRAP/mTOR on Thr37 and Thr46 does not prevent the binding of 4E-BP1 to eIF4E, it is thought to prime 4E-BP1 for subsequent phosphorylation at Ser65 and Thr70 (5).

**Specificity/Sensitivity:** 4E-BP1 Antibody detects endogenous levels of total 4E-BP1, independent of phosphorylation.

**Source/Purification:** Polyclonal antibodies are produced by immunizing animals with a synthetic peptide corresponding to residues surrounding Ser112 of human 4E-BP1. Antibodies are purified by protein A affinity chromatography.

**Background References:**

- (1) Pause, A. et al. (1994) *Nature* 371, 762–767.
- (2) Brunn, G.J. et al. (1997) *Science* 277, 99–101.
- (3) Gingras, A.C. et al. (1998) *Genes Dev.* 12, 502–513.
- (4) Fadden, P. et al. (1997) *J. Biol. Chem.* 272, 10240–10247.
- (5) Gingras, A.C. et al. (1999) *Genes Dev.* 13, 1422–1437.



Western blot analysis of extracts from various cell lines using 4E-BP1 Antibody.

Entrez-Gene ID #1978  
Swiss-Prot Acc. #Q13541

**Storage:** Supplied in 10 mM sodium HEPES (pH 7.5), 150 mM NaCl, 100 µg/ml BSA and 50% glycerol. Store at -20°C. Do not aliquot the antibody.

\*Species cross-reactivity is determined by western blot.

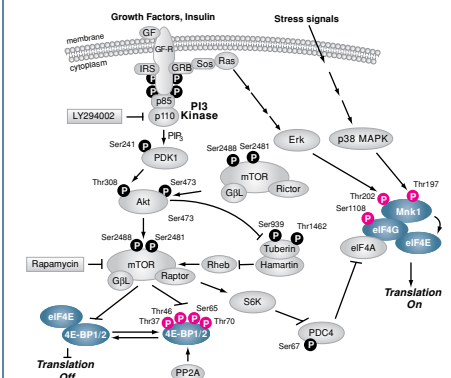
\*\*Anti-rabbit secondary antibodies must be used to detect this antibody.

**Recommended Antibody Dilutions:**

Western Blotting	1:1000
Immunoprecipitation	1:50

For application specific protocols please see the web page for this product at [www.cellsignal.com](http://www.cellsignal.com).

Please visit [www.cellsignal.com](http://www.cellsignal.com) for a complete listing of recommended companion products.



**IMPORTANT: For western blots, incubate membrane with diluted antibody in 5% w/v BSA, 1X TBS, 0.1% Tween-20 at 4°C with gentle shaking, overnight.**

**Applications Key:** W—Western IP—Immunoprecipitation IHC—Immunohistochemistry ChIP—Chromatin Immunoprecipitation IF—Immunofluorescence F—Flow cytometry E-P—ELISA-Peptide

**Species Cross-Reactivity Key:** H—human M—mouse R—rat Hm—hamster Mk—monkey Mi—mink C—chicken Dm—D. melanogaster X—Xenopus Z—zebrafish B—bovine Dg—dog Pg—pig Sc—S. cerevisiae Ce—C. elegans Hr—Horse All—all species expected Species enclosed in parentheses are predicted to react based on 100% homology.