

#9536 Store at -20°C

Enolase-2 Antibody



100 µl
(10 western blots)

Orders ■ 877-616-CELL (2355)
orders@cellsignal.com
Support ■ 877-678-TECH (8324)
info@cellsignal.com
Web ■ www.cellsignal.com

rev. 04/13/10

This product is intended for research purposes only. This product is not intended to be used for therapeutic or diagnostic purposes in humans or animals.

Entrez-Gene ID #2026
Swiss-Prot Acc. #P09104

Applications	Species Cross-Reactivity*	Molecular Wt.	Source
W Endogenous	H, M	47 kDa	Rabbit**

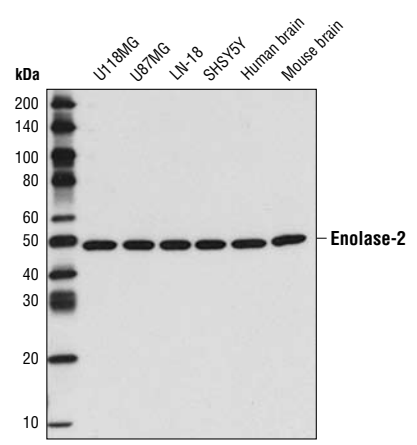
Background: Enolase is a glycolytic enzyme that is involved in the conversion of 2-phosphoglycerate to phosphoenolpyruvate (1). Mammalian enolase has three subunits: α , β , and γ , that can form homo and heterodimers. Homodimers of γ enolase are neuronal-specific (2). Clinical studies have shown elevated levels of neuro-specific enolase-2 in neuroblastoma (2) and small-cell lung cancer (3,4). Hence, enolase-2 is widely used as a diagnostic marker in a variety of clinical assays (3,4).

Specificity/Sensitivity: Enolase-2 Antibody detects endogenous levels of total enolase-2 protein.

Source/Purification: Polyclonal antibodies are produced by immunizing animals with a synthetic peptide derived from the sequence of human enolase-2. Antibodies are purified by protein A and peptide affinity chromatography.

Background References:

- (1) Van Obberghen, E. et al. (1988) *J Neurosci Res* 19, 450–6.
- (2) Panchoi, V. (2001) *Cell Mol Life Sci* 58, 902–20.
- (3) Stern, P. et al. (2007) *Tumour Biol* 28, 84–92.
- (4) O'Shea, P. et al. (1995) *Ir J Med Sci* 164, 31–6.



Western blot analysis of extracts from various cell lines and human and mouse brain using Enolase-2 Antibody.

Storage: Supplied in 10mM HEPES (pH 7.5), 150 mM NaCl, 100 µg/ml BSA and 50% glycerol. Store at -20°C. Do not aliquot the antibody.

*Species cross-reactivity is determined by western blot.

**Anti-rabbit secondary antibodies must be used to detect this antibody.

Recommended Antibody Dilutions:

Western blotting 1:1000

For application specific protocols please see the web page for this product at www.cellsignal.com.

Please visit www.cellsignal.com for a complete listing of recommended companion products.

IMPORTANT: For western blots, incubate membrane with diluted antibody in 5% w/v BSA, 1X TBS, 0.1% Tween-20 at 4°C with gentle shaking, overnight.

Applications Key: W—Western IP—Immunoprecipitation IHC—Immunohistochemistry ChIP—Chromatin Immunoprecipitation IF—Immunofluorescence F—Flow cytometry E-P—ELISA-Peptide
Species Cross-Reactivity Key: H—human M—mouse R—rat Hm—hamster Mk—monkey Mi—mink C—chicken Dm—D. melanogaster X—Xenopus Z—zebrafish B—bovine
 Dg—dog Pg—pig Sc—S. cerevisiae Ce—C. elegans Hr—horse All—all species expected Species enclosed in parentheses are predicted to react based on 100% homology.