

**#9582** Store at **-20°C**

# β-Catenin (6B3) Rabbit mAb

100 μl  
 (10 western blots)



**Orders** ■ 877-616-CELL (2355)  
 orders@cellsignal.com  
**Support** ■ 877-678-TECH (8324)  
 info@cellsignal.com  
**Web** ■ www.cellsignal.com

rev. 02/18/11

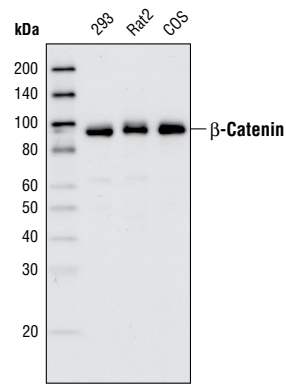
This product is intended for research purposes only. This product is not intended to be used for therapeutic or diagnostic purposes in humans or animals.

Applications	Species Cross-Reactivity*	Molecular Wt.	Isotype
W, IP, IHC-P, IHC-F Endogenous	H, M, R, Mk (B, Dg, X, Pg, Hr)	92 kDa	Rabbit IgG**

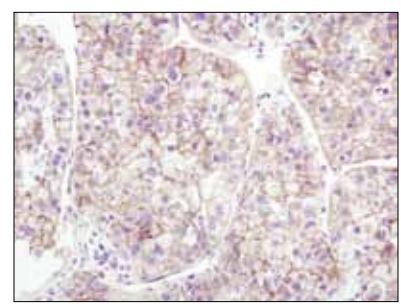
**Background:** β-catenin is a key downstream effector in the Wnt signaling pathway. (1). It is implicated in two major biological processes of vertebrates: early embryonic development (2) and tumorigenesis (3). CK1 phosphorylates β-catenin on Ser45. This phosphorylation event primes β-catenin for subsequent phosphorylation by GSK-3 (4-6). GSK-3β destabilizes β-catenin by phosphorylating it at Ser33, 37 and Thr41 (7). Mutations in these phosphorylation sites, which result in the stabilization of β-catenin protein levels, have been found in many tumor cell lines (8).

**Specificity/Sensitivity:** β-Catenin (6B3) Rabbit mAb detects endogenous levels of total β-catenin.

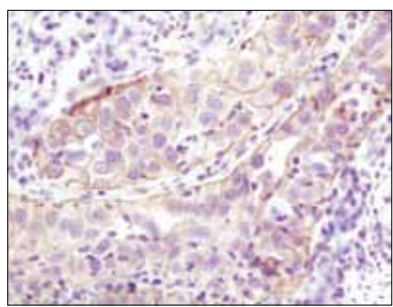
**Source/Purification:** Monoclonal antibody is produced by immunizing animals with a synthetic peptide corresponding to the carboxy terminus of human β-catenin.



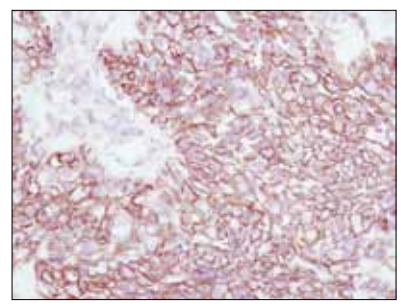
Western blot analysis of total cell lysates from 293, Rat2 and COS cells using β-Catenin (6B3) Rabbit mAb.



Immunohistochemical analysis of paraffin-embedded human hepatocellular carcinoma using β-Catenin (6B3) Rabbit mAb.



Immunohistochemical analysis of paraffin-embedded human lung carcinoma using β-Catenin (6B3) Rabbit mAb.



◀ Immunohistochemical analysis of frozen HCC-827 xenograft using β-Catenin (6B3) Rabbit mAb.

**IMPORTANT: For western blots, incubate membrane with diluted antibody in 5% w/v nonfat dry milk, 1X TBS, 0.1% Tween-20 at 4°C with gentle shaking, overnight.**

**Entrez-Gene ID** #1499  
**Swiss-Prot Acc.** #P49450

**Storage:** Supplied in 10 mM sodium HEPES (pH 7.5), 150 mM NaCl, 100 μg/ml BSA, 50% glycerol and less than 0.02% sodium azide. Store at **-20°C**. Do not aliquot the antibody.

**\*Species cross-reactivity is determined by western blot.**

**\*\*Anti-rabbit secondary antibodies must be used to detect this antibody.**

**Recommended Antibody Dilutions:**

Western blotting	1:1000
Immunoprecipitation	1:50
Immunohistochemistry (Paraffin)	1:100†
Unmasking buffer:	Citrate
Antibody diluent:	SignalStain® Antibody Diluent #8112
Detection reagent:	SignalStain® Boost (HRP, Rabbit) #8114
† Optimal IHC dilutions determined using SignalStain® Boost IHC Detection Reagent.	
Immunohistochemistry (Frozen)	1:100
Fixative	3% Formaldehyde Methanol

**For application specific protocols please see the web page for this product at [www.cellsignal.com](http://www.cellsignal.com).**

**Please visit [www.cellsignal.com](http://www.cellsignal.com) for a complete listing of recommended companion products.**

**Background References:**

- (1) Cadigan, K.M. and Nusse, R. (1997) *Genes Dev.* 11, 3286–3305.
- (2) Wodarz, A. and Nusse, R. (1998) *Annu. Rev. Cell. Dev. Biol.* 14, 59–88.
- (3) Polakis, P. (1999) *Curr. Opin. Genet. Dev.* 9, 15–21.
- (4) Amit, S. et al. (2002) *Genes Dev.* 16, 1066–1076.
- (5) Lin, C. et al. (2002) *Cell* 108, 837–847.
- (6) Yanagawa, S. et al. (2002) *EMBO J.* 21, 1742.
- (7) Yost, C. et al. (1996) *Genes Dev.* 10, 1443–1454.
- (8) Morin, P.J. (1997) *Science* 275, 1787–1790.

Rabbit monoclonal antibody is produced under license (granting certain rights including those under U. S. Patent No. 5,675,063) from Eptomics, Inc.

© 2011 Cell Signaling Technology, Inc. Cell Signaling Technology® is a trademark of Cell Signaling Technology, Inc.

**Applications Key:** W—Western IP—Immunoprecipitation IHC—Immunohistochemistry ChIP—Chromatin Immunoprecipitation IF—Immunofluorescence F—Flow cytometry E-P—ELISA-Peptide  
**Species Cross-Reactivity Key:** H—human M—mouse R—rat Hm—hamster Mk—monkey Mi—mink C—chicken Dm—D. melanogaster X—Xenopus Z—zebrafish B—bovine  
 Dg—dog Pg—pig Sc—S. cerevisiae Ce—C. elegans Hr—horse All—all species expected Species enclosed in parentheses are predicted to react based on 100% homology.