

#9662 Store at -20°C

Caspase-3 Antibody

100 µl
 (10 western blots)



Orders ■ 877-616-CELL (2355)
 orders@cellsignal.com
Support ■ 877-678-TECH (8324)
 info@cellsignal.com
Web ■ www.cellsignal.com

rev. 09/10/09

This product is for *in vitro* research use only and is not intended for use in humans or animals.
 This product is not intended for use as a therapeutic or in diagnostic procedures.

Applications	Species Cross-Reactivity*	Molecular Wt.	Source
W, IP, IHC-P Endogenous	H, M, R, Mk	17, 19, 35 kDa	Rabbit**

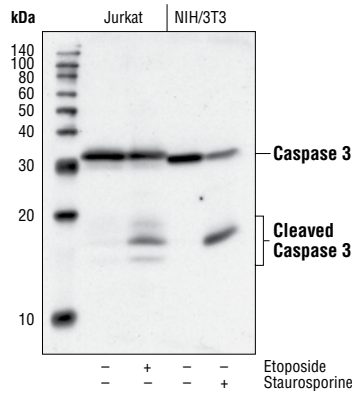
Background: Caspase-3 (CPP-32, Apoptain, Yama, SCA-1) is a critical executioner of apoptosis, as it is either partially or totally responsible for the proteolytic cleavage of many key proteins such as the nuclear enzyme poly (ADP-ribose) polymerase (PARP) (1). Activation of caspase-3 requires proteolytic processing of its inactive zymogen into activated p17 and p12 fragments. Cleavage of caspase-3 requires aspartic acid at the P1 position (2).

Specificity/Sensitivity: Caspase-3 Antibody detects endogenous levels of full length caspase-3 (35 kDa) and the large fragment of caspase-3 resulting from cleavage (17 kDa).

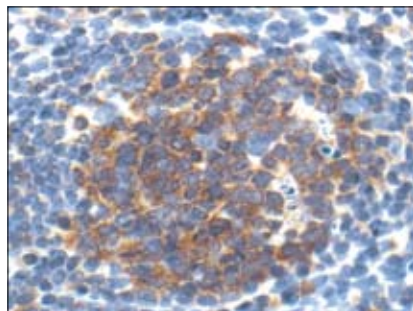
Source/Purification: Polyclonal antibodies are produced by immunizing rabbits with a synthetic peptide (KLH-coupled) corresponding to residues surrounding the cleavage site of human caspase-3. Antibodies are purified by protein A and peptide affinity chromatography.

Background References:

- (1) Fernandes-Alnemri, T. et al. (1994) *J. Biol. Chem.* 269, 30761–30764.
- (2) Nicholson, D.W. et al. (1995) *Nature* 376, 37–43.



Western blot analysis of extracts from Jurkat cells, untreated or etoposide-treated (25µM, 5hrs), and NIH/3T3 cells, untreated or staurosporine-treated (1µM, 3hrs), using Caspase-3 Antibody.



Immunohistochemical staining of paraffin-embedded human tonsil, showing cytoplasmic localization, using Caspase-3 Antibody.

Entrez-Gene ID #836
Swiss-Prot Acc. #P42574

Storage: Supplied in 10 mM sodium HEPES (pH 7.5), 150 mM NaCl, 100 µg/ml BSA and 50% glycerol. Store at -20°C. *Do not aliquot the antibody.*

***Species cross-reactivity is determined by western blot.**

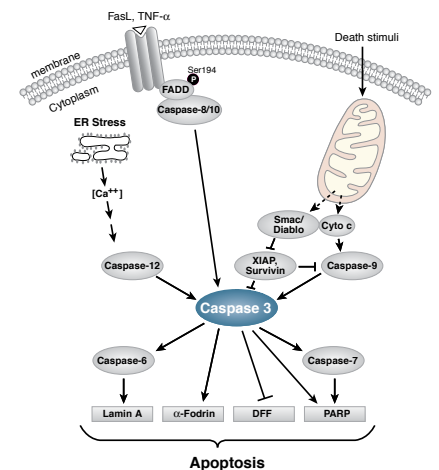
****Anti-rabbit secondary antibodies must be used to detect this antibody.**

Recommended Antibody Dilutions:

Western blotting	1:1000
Immunoprecipitation	1:50
Immunohistochemistry (Paraffin)	1:200
IHC protocol: Unmasking buffer/Antibody diluent Citrate/PBST-5% NGS	

For application specific protocols please see the web page for this product at www.cellsignal.com.

Please visit www.cellsignal.com for a complete listing of recommended companion products.



IMPORTANT: For western blots, incubate membrane with diluted antibody in 5% w/v nonfat dry milk, 1X TBS, 0.1% Tween-20 at 4°C with gentle shaking, overnight.

Applications Key: W—Western IP—Immunoprecipitation IHC—Immunohistochemistry ChIP—Chromatin Immunoprecipitation IF—Immunofluorescence F—Flow cytometry E-P—ELISA-Peptide
Species Cross-Reactivity Key: H—human M—mouse R—rat Hm—hamster Mk—monkey Mi—mink C—chicken Dm—D. melanogaster X—Xenopus Z—zebrafish B—bovine
 Dg—dog Pg—pig Sc—S. cerevisiae All—all species expected Species enclosed in parentheses are predicted to react based on 100% homology.