

Caspase-3 (8G10) Rabbit mAb

✓ 100 µl
(10 western blots)

Orders ■ 877-616-CELL (2355)
orders@cellsignal.com
Support ■ 877-678-TECH (8324)
info@cellsignal.com
Web ■ www.cellsignal.com

rev. 08/28/09

This product is intended for research purposes only. This product is not intended to be used for therapeutic or diagnostic purposes in humans or animals.

| Applications | Species Cross-Reactivity* | Molecular Wt. | Isotype |
|---------------------|---------------------------|----------------|--------------|
| W, IP Endogenous | H, M, R, Mk | 17, 19, 35 kDa | Rabbit IgG** |

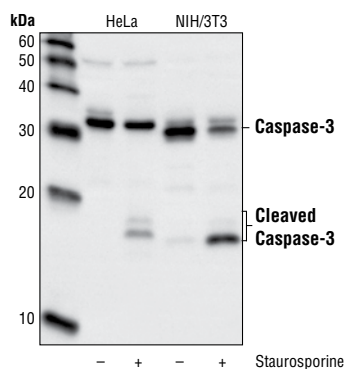
Background: Caspase-3 (CPP-32, Apoptain, Yama, SCA-1) is a critical executioner of apoptosis, as it is either partially or totally responsible for the proteolytic cleavage of many key proteins such as the nuclear enzyme poly (ADP-ribose) polymerase (PARP) (1). Activation of caspase-3 requires proteolytic processing of its inactive zymogen into activated p17 and p12 fragments. Cleavage of caspase-3 requires aspartic acid at the P1 position (2).

Specificity/Sensitivity: Caspase-3 (8G10) Rabbit mAb detects endogenous levels of full-length (35 kDa) and large fragment (17/19 kDa) of caspase-3 resulting from cleavage at aspartic acid 175.

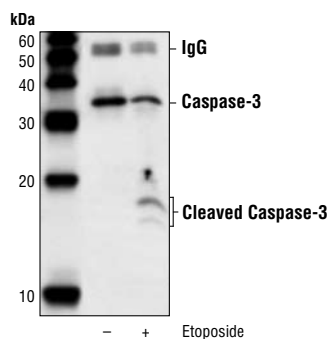
Source/Purification: Monoclonal antibody is produced by immunizing animals with a synthetic peptide corresponding to amino-terminal residues adjacent to (Asp175) in human caspase-3.

Background References:

- (1) Fernandes-Alnemri, T. et al. (1994) *J. Biol. Chem.* 269, 30761–30764.
- (2) Nicholson, D. W. et al. (1995) *Nature* 376, 37–43.



Western analysis of HeLa (human), NIH/3T3 (mouse) cell extracts treated with 1 µM staurosporine (3hrs) in vivo using Caspase-3 (8G10) Rabbit mAb.



Immunoprecipitation of cleaved caspase-3 from Jurkat cell extracts untreated (control) or treated with etoposide (25µM 5hrs) (apoptotic) using Caspase-3 (8G10) Rabbit mAb, and western probed with the same antibody.

Entrez-Gene ID # 836
Swiss-Prot Acc. # P42574

Storage: Supplied in 10 mM sodium HEPES (pH 7.5), 150 mM NaCl, 100 µg/ml BSA, 50% glycerol and less than 0.02% sodium azide. Store at -20°C. Do not aliquot the antibody.

*Species cross-reactivity is determined by western blot.

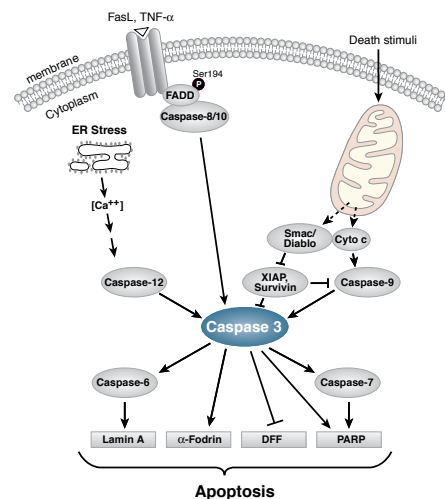
**Anti-rabbit secondary antibodies must be used to detect this antibody.

Recommended Antibody Dilutions:

Western blotting 1:1000
Immunoprecipitation 1:100

For application specific protocols please see the web page for this product at www.cellsignal.com.

Please visit www.cellsignal.com for a complete listing of recommended companion products.



IMPORTANT: For western blots, incubate membrane with diluted antibody in 5% nonfat dry milk, 1X TBS, 0.1% Tween-20 at 4°C with gentle shaking, overnight.

Applications Key: W—Western IP—Immunoprecipitation IHC—Immunohistochemistry ChIP—Chromatin Immunoprecipitation IF—Immunofluorescence F—Flow cytometry E-P—ELISA-Peptide
Species Cross-Reactivity Key: H—human M—mouse R—rat Hm—hamster Mk—monkey Mi—mink C—chicken Dm—D. melanogaster X—Xenopus Z—zebrafish B—bovine
Dg—dog Pg—pig Sc—S. cerevisiae Ce—C. elegans Hr—horse All—all species expected Species enclosed in parentheses are predicted to react based on 100% homology.