

Wortmannin

✓ 1 mg

Orders ■ 877-616-CELL (2355)
orders@cellsignaling.com

Support ■ 877-678-TECH (8324)
info@cellsignaling.com

Web ■ www.cellsignaling.com

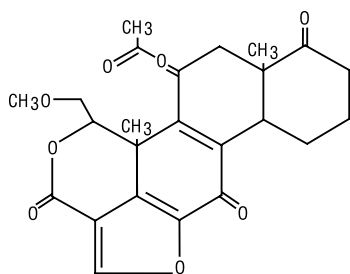
rev. 12/1/06

This product is for *in vitro* research use only and is not intended for use in humans or animals.

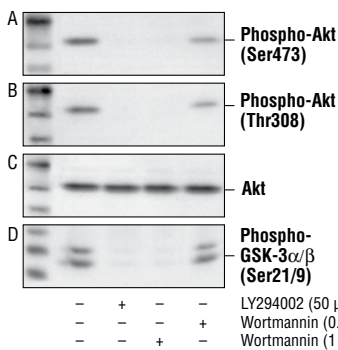
Background: Wortmannin is a very potent, specific and direct inhibitor of PI3 kinase, originally derived from fungus (1,2). The inhibition is irreversible and noncompetitive. Wortmannin does not inhibit PI4 kinase, protein kinase C or protein tyrosine kinase (3).

Molecular Weight: 428.4 g/mol

Molecular Formula: C₂₃H₂₄O₈



Notes on Use: For 1 mM stock, dissolve 1 mg in 2.32 ml DMSO. For experiments with cultured cells, CST recommends treating with wortmannin at concentrations between 0.2 μM and 1 μM, for one hour prior to, and for the duration of, the stimulation. See MSDS for further information.



Western blot analysis of extracts from untreated, wortmannin and/or LY294002 treated Jurkat cells, using Phospho-Akt (Ser473) Antibody #9271 (A), Phospho-Akt (Thr308) Antibody #9275 (B), Akt Antibody #9272 (C) and Phospho-GSK-3α/β (Ser21/9) Antibody #9331 (D).

Storage: Stable for two years when stored at -20°C in the dark. Once dissolved and aliquoted, product is stable for three months at -20°C.

Companion Products:

Phospho-Akt (Ser473) Antibody #9271

Phospho-Akt (Thr308) Antibody #9275

Akt Antibody #9272

Phospho-GSK-3α/β (Ser21/9) Antibody #9331

Phospho-Akt (Thr308) (244F9) Rabbit mAb #4056

Phospho-Akt (Ser473) (193H12) Rabbit mAb #4058

Akt Isoform Sampler Kit #9940

PhosphoPlus® Akt Activation Kit #9280